

Installation guide

For Dragon v16 licenses of:

Nuance®
Dragon®
Professional

Nuance®
Dragon®
Legal

Copyright

1991 - 2023. Dragon Professional Dragon Professional, Dragon Law Enforcement, Dragon Legal

This material may not include some last-minute technical changes and/or revisions to the software. Changes are periodically made to the information described here. Future versions of this material will incorporate these changes.

Nuance Communications, Inc. may have patents or pending patent applications covering subject matter in this document. The furnishing of this document does not give you any license to such patents.

No part of this material or software may be reproduced in any form or by any means, including, without limitation, electronic or mechanical, such as photocopying or recording, or by any information storage and retrieval systems, without the express written consent of Nuance Communications, Inc. Specifications are subject to change without notice.

End-of-life: Third-party environments:

Support for third-party environments is only valid as long as they are supported by the corresponding vendor and might be subject to other restrictions. Contact Nuance Technical Support for details. For more information, see the documentation delivered with the third-party product and supporting Nuance documentation.

When standard support by the vendor has stopped, Nuance will continue support if an issue is specific to the Nuance solution, within the limitations of the vendor's standard end-of-life and Nuance's policy. This means that issues that are a combination of the vendor's component and the Nuance solution cannot be supported.

Copyright © 2023 Nuance Communications, Inc. All rights reserved.

Nuance, the Nuance logo, Dragon, DragonBar, the Dragon logo, NaturallySpeaking, RealSpeak, Nothing But Speech (NBS), Natural Language Technology, Full Text Control, BestMatch, MouseGrid, and Vocabulary Editor are registered trademarks or trademarks of Nuance Communications, Inc. All other names and trademarks referenced herein are trademarks of Nuance Communications, Inc., or their respective owners. Many of the designations used by manufacturers and sellers to distinguish their products are claimed as trademarks, including the following:

Corel and WordPerfect are registered trademarks of Corel Corporation.

Microsoft, Microsoft Office, Microsoft Office Live, Microsoft Outlook, Microsoft Word, Microsoft Excel, Microsoft PowerPoint, Microsoft InfoPath, Microsoft Access, Microsoft Visual Basic, Microsoft ActiveSync, Microsoft Edge, Hotmail, Windows, Windows Live, Windows 10 and 11, Windows Server 2016, Windows Server 2019, and Windows Server 2022 are trademarks or registered trademarks of Microsoft Corporation.

Mozilla and Mozilla Firefox are trademarks or registered trademarks of the Mozilla Foundation.

Google, Google+, Google Chrome, and Gmail are trademarks of Google, Inc.

Voicelt, the Voicelt logo, and Voicelt Link are trademarks or registered trademarks of VXI Corporation.

AMD is a trademark of Advanced Micro Devices, Inc.

Yahoo! is a registered trademark of Yahoo! Inc.

Third party software

Boost Software License - Version 1.0 - © Copyright August 17, 2003.

Permission is hereby granted, free of charge, to any person or organization obtaining a copy of the software and accompanying documentation covered by this license (the "Software") to use, reproduce, display, distribute, execute, and transmit the Software, and to prepare derivative works of the Software, and to permit third-parties to whom the Software is furnished to do so, all subject to the following:

The copyright notices in the Software and this entire statement, including the above license grant, this restriction and the following disclaimer, must be included in all copies of the Software, in whole or in part, and all derivative works of the Software, unless such copies or derivative works are solely in the form of machine-executable object code generated by a source language processor.

THE SOFTWARE IS PROVIDED "AS IS", WITHOUT WARRANTY OF ANY KIND, EXPRESS OR IMPLIED, INCLUDING BUT NOT LIMITED TO THE WARRANTIES OF MERCHANTABILITY, FITNESS FOR A PARTICULAR PURPOSE, TITLE AND NON-INFRINGEMENT. IN NO EVENT SHALL THE COPYRIGHT HOLDERS OR ANYONE DISTRIBUTING THE SOFTWARE BE LIABLE FOR ANY DAMAGES OR OTHER LIABILITY, WHETHER IN CONTRACT, TORT OR OTHERWISE, ARISING FROM, OUT OF OR IN CONNECTION WITH THE SOFTWARE OR THE USE OR OTHER DEALINGS IN THE SOFTWARE.

Firebreath Software License - Version 1.7 - © Copyright 2009.



[The 3-Clause BSD License](#)

jsoncpp - Copyright (c) 2007-2010 Baptiste Lepilleur and The JsonCpp Authors



The MIT License

MVVM Light Copyright (c) 2009 - 2018 Laurent Bugnion



The MIT License

pugixml library (<http://pugixml.org>). pugixml is Copyright (C) 2006-2018 Arseny Kapoulkine.



The MIT License

Google Drive Support is a trademarks of Google, Inc.

Except as otherwise noted, the content of this page is licensed under the [Creative Commons Attribution 3.0 License](#)

Google Gmail Support is a trademarks of Google, Inc.

Apache License 2.0

A permissive license whose main conditions require preservation of copyright and license notices. Contributors provide an express grant of patent rights. Licensed works, modifications, and larger works may be distributed under different terms and without source code.

Citrix Virtual Channel Copyright 2015 Citrix Systems, Inc. All rights reserved.

[Product license agreement](#)

Mozilla Addon SDK 1.17

The files which make up the SDK are developed by Mozilla and licensed under the [MPL 2.0](http://mozilla.org/MPL/2.0/) (<http://mozilla.org/MPL/2.0/>)

Utf8 2.3.4 by Nemanja Trifunovic Copyright 2006 Nemanja Trifunovic

Permission is hereby granted, free of charge, to any person or organization obtaining a copy of the software and accompanying documentation covered by this license (the "Software") to use, reproduce, display, distribute, execute, and transmit the Software, and to prepare derivative works of the Software, and to permit third-parties to whom the Software is furnished to do so, all subject to the following:

The copyright notices in the Software and this entire statement, including the above license grant, this restriction and the following disclaimer, must be included in all copies of the Software, in whole or in part, and all derivative works of the Software, unless such copies or derivative works are solely in the form of machine-executable object code generated by a source language processor.

THE SOFTWARE IS PROVIDED "AS IS", WITHOUT WARRANTY OF ANY KIND, EXPRESS OR IMPLIED, INCLUDING BUT NOT LIMITED TO THE WARRANTIES OF MERCHANTABILITY, FITNESS FOR A PARTICULAR PURPOSE, TITLE AND NON-INFRINGEMENT. IN NO EVENT SHALL THE COPYRIGHT HOLDERS OR ANYONE DISTRIBUTING THE SOFTWARE BE LIABLE FOR ANY DAMAGES OR OTHER LIABILITY, WHETHER IN CONTRACT, TORT OR OTHERWISE, ARISING FROM, OUT OF OR IN CONNECTION WITH THE SOFTWARE OR THE USE OR OTHER DEALINGS IN THE SOFTWARE.

FFmpeg is a trademark of Fabrice Bellard.

FFmpeg is licensed under the [GNU Lesser General Public License \(LGPL\) version 2.1](#) or later and the [GNU General Public License \(GPL\) version 2](#) or later.

WinWrap® Basic, Copyright 1993-2017 Polar Engineering, Inc.,

<http://www.winwrap.com/>

<http://www.winwrap.com/web2/asset/doc/all/distrib2017.pdf>

Newton JSON Copyright © 2007 James Newton-King



[The MIT License](#)

TweetSharp - Copyright (c) 2009-2013 Daniel Crenna, Jason Diller, and contributors

THE SOFTWARE IS PROVIDED "AS IS", WITHOUT WARRANTY OF ANY KIND, EXPRESS OR IMPLIED, INCLUDING BUT NOT LIMITED TO THE WARRANTIES OF MERCHANTABILITY, FITNESS FOR A PARTICULAR PURPOSE AND NONINFRINGEMENT. IN NO EVENT SHALL THE AUTHORS OR COPYRIGHT HOLDERS BE LIABLE FOR ANY CLAIM, DAMAGES OR OTHER LIABILITY, WHETHER IN AN ACTION OF CONTRACT, TORT OR OTHERWISE, ARISING FROM, OUT OF OR IN CONNECTION WITH THE SOFTWARE OR THE USE OR OTHER DEALINGS IN THE SOFTWARE.

SQLite

SQLite source code is in the public-domain and is free to everyone to use for any purpose.

IPWorks

[IPWorks - END USER LICENSING AGREEMENT](#)

Xerces-C++ XML parser

Xerces-C++ is made available under the [Apache Software License, Version 2.0](#).

FlexNet Connect

Copyright © 2021 Flexera. All Rights Reserved

Microsoft.Web.WebView2

Copyright (C) Microsoft Corporation. All rights reserved.

Redistribution and use in source and binary forms, with or without modification, are permitted provided that the following conditions are met:

- * Redistributions of source code must retain the above copyright notice, this list of conditions and the following disclaimer.
- * Redistributions in binary form must reproduce the above copyright notice, this list of conditions and the following disclaimer in the documentation and/or other materials provided with the distribution.
- * The name of Microsoft Corporation, or the names of its contributors may not be used to endorse or promote products derived from this software without specific prior written permission.

THIS SOFTWARE IS PROVIDED BY THE COPYRIGHT HOLDERS AND CONTRIBUTORS "AS IS" AND ANY EXPRESS OR IMPLIED WARRANTIES, INCLUDING, BUT NOT LIMITED TO, THE IMPLIED WARRANTIES OF MERCHANTABILITY AND FITNESS FOR A PARTICULAR PURPOSE ARE DISCLAIMED. IN NO EVENT SHALL THE COPYRIGHT OWNER OR CONTRIBUTORS BE LIABLE FOR ANY DIRECT, INDIRECT, INCIDENTAL, SPECIAL, EXEMPLARY, OR CONSEQUENTIAL DAMAGES (INCLUDING, BUT NOT LIMITED TO, PROCUREMENT OF SUBSTITUTE GOODS OR SERVICES; LOSS OF USE, DATA, OR PROFITS; OR BUSINESS INTERRUPTION) HOWEVER CAUSED AND ON ANY THEORY OF LIABILITY, WHETHER IN CONTRACT, STRICT LIABILITY, OR TORT (INCLUDING NEGLIGENCE OR OTHERWISE) ARISING IN ANY WAY OUT OF THE USE OF THIS SOFTWARE, EVEN IF ADVISED OF THE POSSIBILITY OF SUCH DAMAGE.

Icons created using FlatIcons.net.

Contents

Installation Guide	1
Copyright	2
Contents	5
Chapter 1: About this guide	7
About Dragon Professional	7
Additional resources	7
Documentation	7
Interactive tutorial	7
Support	8
Chapter 2: Preparing to install Dragon	9
Preparing for an installation	9
Storage space considerations	9
Dragon system requirements	9
Chapter 3: Initial Installation of Dragon Professional	11
Install Dragon and choose the default settings	11
Installing Dragon on a single computer	11
Upgrading Dragon	13
Before you upgrade	13
Best practices	14
Upgrading to Version 16	15
Dragon file structure	16
Windows 10 and 11	16
Accessing program files	17

Chapter 1: About this guide

About Dragon Professional

Dragon Professional allows users to create reports, spreadsheets, presentations and other documentation more efficiently with fast, accurate dictation and transcription. Dragon Professional also includes voice commands that allow users to perform everyday tasks without using the mouse or keyboard. For example, use voice commands to:



- Correct and format text.
- Launch applications.
- Navigate in applications.
- Access buttons and menus in supported programs, including Microsoft Word, Corel WordPerfect, WordPad, and more

Dragon Professional can be installed on each client computer manually .

Additional resources

The following resources are available in addition to this guide to help you manage your Dragon installation.

Documentation

Document	Description	Location
Dragon Help	Full online Help system that includes commands and instructions for dictating, correcting, and more with Dragon.	Dragon Help. When Dragon is open, click the Help icon () on the DragonBar, and then select Help Topics .
<i>Dragon Release Notes</i>	New features, system requirements, client upgrade instructions, and known issues.	Dragon Help. Do the following: <ol style="list-style-type: none"> 1. When Dragon is open, click the Help icon () on the DragonBar, and then select Help Topics. 2. Click Get started. 3. Click Dragon release notes.
<i>Dragon Wireless Headset User Guide</i>	Instructions for connecting and using your Bluetooth headset with Dragon.	Dragon Support web site

Interactive tutorial

Dragon Professional includes an interactive tutorial with progressive simulations that help you learn Dragon skills.

When you are connected to the internet, Dragon connects to a web-based interactive tutorial. If you don't have an internet connection, the tutorial runs locally.

Support

The Dragon Support web site provides many resources to assist you with your Dragon installation. For more information on Support offerings, see the Dragon Support web site at:

<https://www.nuance.com/dragon/support/dragon-naturallyspeaking.html>

Chapter 2: Preparing to install Dragon

Preparing for an installation

Before installing, modifying, or upgrading Dragon Professional:

- Install any pending Windows updates, and then restart the computer.
- Turn off or disable any antivirus software until installation is complete. Installation can sometimes trigger a false virus report.
- Close all open applications.
- Ensure your system meets the requirements before attempting to install Dragon Professional.

For more information, see [“Dragon system requirements” on page 9](#).

Installation considerations

- Administrator rights are not required to create a user profile or use the software after installation. Note that if an administrator creates a user profile while logged in as an administrator, that profile is not accessible to users with restricted privileges.
- Users are permitted to create multiple profiles, provided each profile is for one person. Additional users must purchase a separate license for Dragon Professional. Volume license agreements are available.

Storage space considerations

Each Dragon user must have his or her own user profile. This is a set of files in which Dragon stores information about each user’s voice, frequently-used words and phrases, optional settings, and custom commands (if applicable). Each computer on which Dragon is installed must have enough free space for the required user profile(s).

Use the following guidelines for allocating disk space on your system. The actual amount of disk space varies from site to site.

To set the amount of data to store:

1. From the DragonBar, select **Tools>Administrative Settings**.
The **Administrative Settings** dialog box opens.
2. Select the **Disk space reserved for network archive** option.

For each user profile:

- 127 MB of hard disk space

Dragon periodically creates a backup copy of a user profile and stores the copy on the local computer.

Dragon system requirements

During the installation process, the software checks that your system meets the following requirements. If they are not met, Dragon Professional is not installed.

RAM	Minimum: 4 GB for all operating systems.
CPU	Minimum: 2.2 GHz Intel® dual core or equivalent AMD processor. Faster processors yield faster performance.
Free hard disk space	<ul style="list-style-type: none"> • 12GB (includes downloaded installation files)
Supported operating systems	<ul style="list-style-type: none"> • Windows 10 (32-bit and 64-bit) and 11 (64-bit) • Windows Server 2016 • Windows Server 2019 • Windows Server 2022
Other	<ul style="list-style-type: none"> • Microsoft Edge or the current version of Chrome or Firefox for online Help and for installation if installing from the Web • Microsoft .NET Framework version 4.8 or later. Generally, the .NET Framework is pre-installed on Windows 10 and 11 computers. If you do not have it installed, you are prompted to install it during Dragon's installation. Nuance does not provide the .NET Framework with your installation; you must download the installation file from microsoft.com. • Microsoft Visual C++ 2019 Runtime If you do not have it installed, you are prompted to install it during Dragon's installation. • NMS Mode: If you are using a Dragon edition where Nuance Management Center/NMS mode is enabled to help you manage and monitor your system, you'll need: <ul style="list-style-type: none"> • An internet connection to connect to the Nuance Management Center (NMC) Server • A Nuance Management Center login and password to log in to Dragon Your Administrator provisions a Dragon user account in Nuance Management Center for you and assigns the appropriate license. You'll use this login and password to log in to the Dragon client. • An audio input device capable of 16-bit recording for dictation • Note: Apple AirPods are not supported for dictation with Dragon.

Chapter 3: Initial Installation of Dragon Professional

Install Dragon and choose the default settings

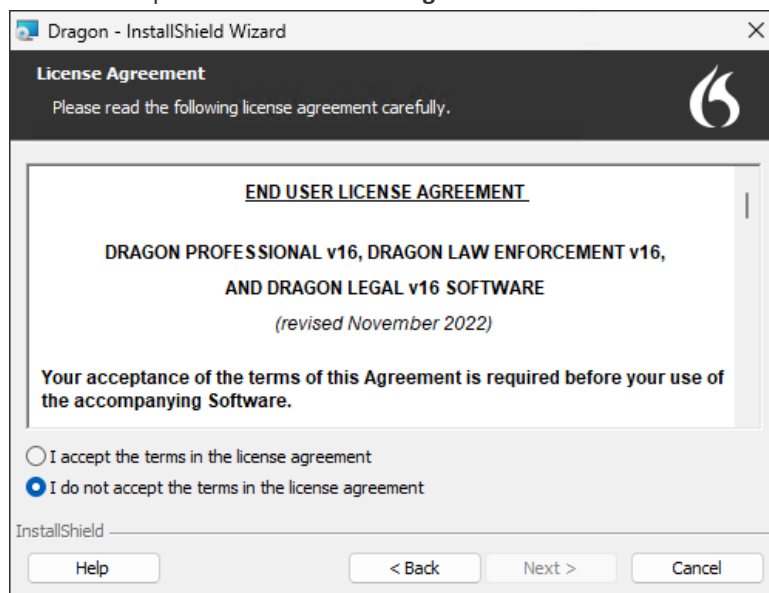
Install Dragon Professional on the client computer using the downloaded installer file. If you plan to install Dragon on multiple computers, run through an initial installation before attempting to install Dragon from a server. Use the initial client installation to set default values for Administrative and Auto-Formatting options. You can then install Dragon Professional on other computers using the same options.

Notes:

- You must have Windows Administrator rights to install or uninstall Dragon Professional.
- If you have more than one language, the installation process uses your operating system's language, if supported. If Dragon does not support your operating system language, the installer runs in English. You cannot install Dragon using a language other than the primary language. For example, if you install the German software on a French operating system, the installation interface is in French. If you install the German software on a Chinese operating system, the installation interface is in English.
- The installation process does not present the QuickStart option. You can enable this option in the Options dialog box after Dragon is installed. For more information, see the online Dragon Professional help.

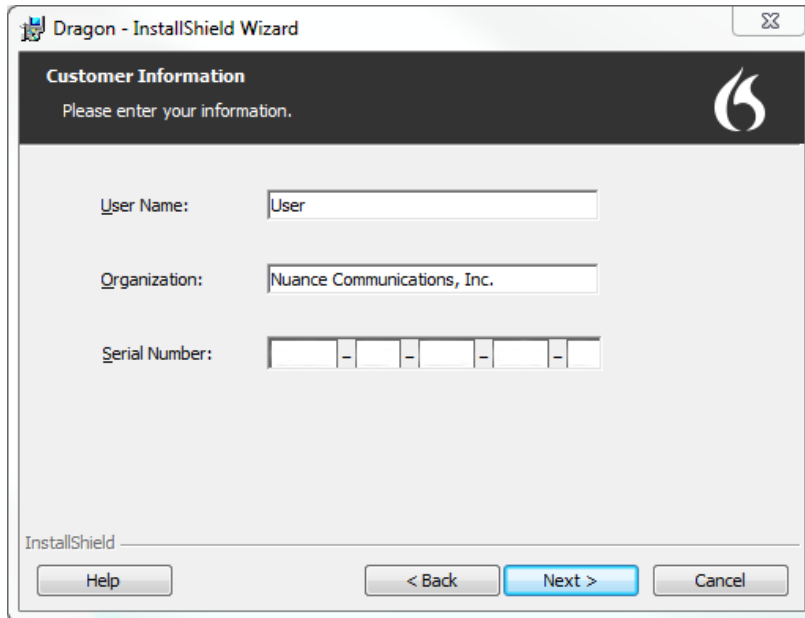
Installing Dragon on a single computer

1. Run the Dragon installation file you downloaded.
The Dragon InstallShield Wizard opens.
2. Click **Next** to proceed to the **License Agreement** screen.



3. Read the text of the agreement, select **I accept...**, and then click **Next**.

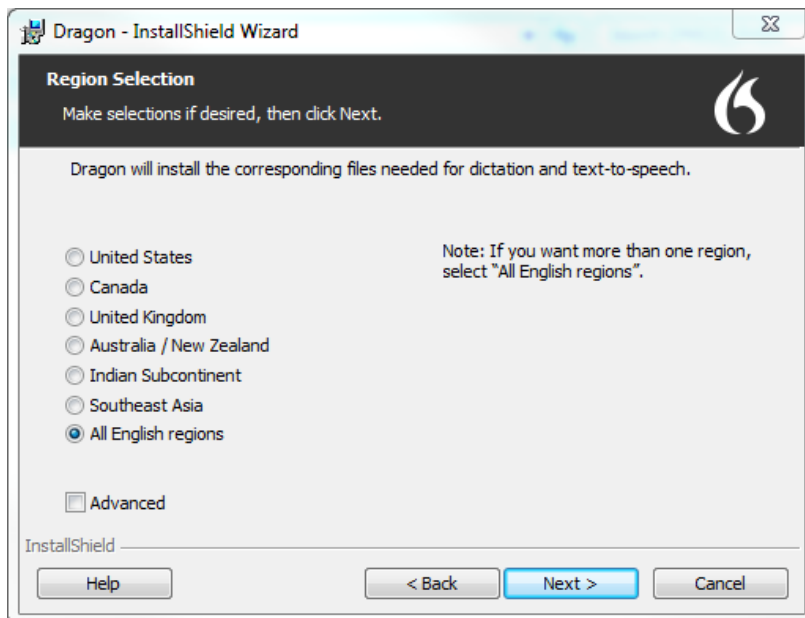
The **Customer Information** screen appears.



The screenshot shows the 'Customer Information' screen of the Dragon - InstallShield Wizard. The window title is 'Dragon - InstallShield Wizard'. The main heading is 'Customer Information' with the instruction 'Please enter your information.' and the Dragon logo. There are three input fields: 'User Name' with the text 'User', 'Organization' with the text 'Nuance Communications, Inc.', and 'Serial Number' which is a segmented input field. At the bottom, there are buttons for 'Help', '< Back', 'Next >', and 'Cancel'. The 'Next >' button is highlighted in blue.

4. Enter your User Name, Organization, and the Serial Number supplied with your download of Dragon, and then click **Next**.

The **Region Selection** screen appears.



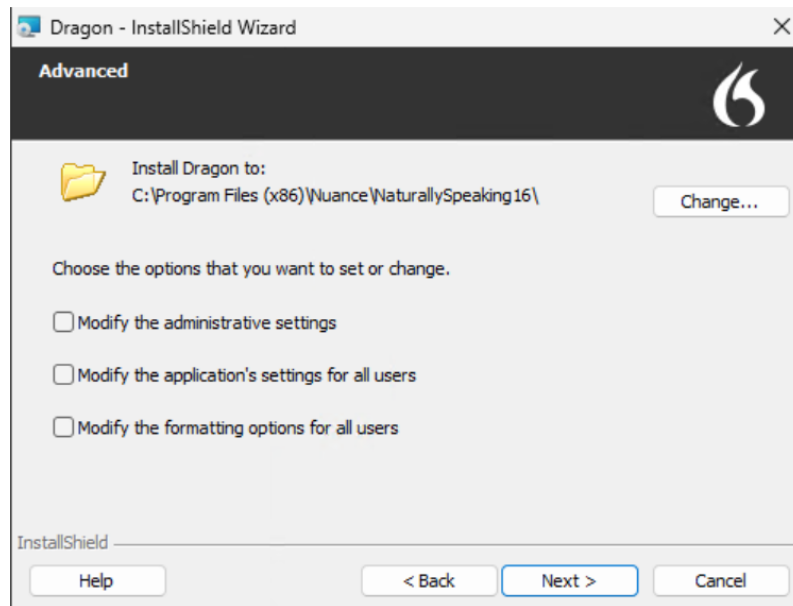
The screenshot shows the 'Region Selection' screen of the Dragon - InstallShield Wizard. The window title is 'Dragon - InstallShield Wizard'. The main heading is 'Region Selection' with the instruction 'Make selections if desired, then click Next.' and the Dragon logo. Below the heading, it says 'Dragon will install the corresponding files needed for dictation and text-to-speech.' There is a list of radio button options: 'United States', 'Canada', 'United Kingdom', 'Australia / New Zealand', 'Indian Subcontinent', 'Southeast Asia', and 'All English regions'. The 'All English regions' option is selected. A note states: 'Note: If you want more than one region, select "All English regions".' There is also an 'Advanced' checkbox which is currently unchecked. At the bottom, there are buttons for 'Help', '< Back', 'Next >', and 'Cancel'. The 'Next >' button is highlighted in blue.

5. Select a region to install, or select **All English regions** to install more than one region.

The region determines the accents and vocabularies available on this installation. Selecting a single region saves disk space, but users cannot create user profiles with an accent that is not included with the selected region.

6. **Optional:** To change the installation directory, select **Advanced**, then click **Next**.

The **Advanced** screen appears.



1. Click **Change...**

A Browse For Folder dialog box opens.

2. Navigate to the folder where you want to install Dragon (or create a new folder by clicking the **Make New Folder** button) and then click **OK**.

Note: By default, Dragon is installed in:

C:\Program Files(x86)\Nuance\NaturallySpeaking16

7. Click **Next** to proceed to the **Ready to Install the Program** screen.
8. Click **Install**.

The installation process begins. It may take several minutes to install Dragon Professional. At times, the progress bar may not appear to be advancing, but the installation is still proceeding internally.

9. When installation of Dragon is complete, the installer displays the completion screen. Click **Finish**.
The Product Registration window appears.
10. Choose whether to register Dragon online now or to have Dragon remind you to register in seven days, and then click **OK**. Registering the product provides faster access to Nuance Technical Support.

You can open Dragon using the desktop shortcut, or find Dragon in the Start menu:

- **Windows 10:** Select **Start > All apps > Dragon**.

Activating Dragon

The first time you start Dragon, you are prompted to activate your copy of Dragon. If you do not activate, Dragon stops working after you start it five times.

Upgrading Dragon

Before you upgrade

Dragon automatically upgrades Dragon 13, 14, and 15 to Dragon 16. Please note the following:

- You can easily upgrade between different versions of the same edition, for example Dragon Professional Group V15.x to Dragon Professional V16.
- If you are upgrading from Dragon Professional or Dragon Legal to Dragon Law Enforcement V16, your user profiles will not be automatically update to V16. Before upgrading, you'll need to export your custom words and commands and then import them into V16. See [Exporting custom words](#) and [Exporting custom commands](#) for more information.
- If you are upgrading from Dragon 12 or earlier, you must do the following:
 - Open Dragon 12 or earlier and export your custom words and commands. See [Exporting custom words](#) and [Exporting custom commands](#) for more information.
 - Delete your installation of Dragon 12 or earlier.
 - Install Dragon 16 and create a new profile when prompted.
 - Open the new profile in Dragon 16 and import your custom words and commands from your Dragon 12 or earlier installation.

Best practices

Before you upgrade, Nuance recommends exporting your custom words and commands for sake-keeping. You'll need these files in case you need to re-install your previous version of Dragon.

Your user profiles' vocabulary may include custom words or phrases you added manually or the email and document analysis feature and words Dragon learned during the process of correcting misrecognitions, such as specialized words, names, acronyms, and abbreviations.

Exporting/importing custom words (optional)

1. From the DragonBar, select **Vocabulary Center>Export custom word and phrase list**.
2. Specify a file name for the text file.
3. Click **Save**. Remember this location.

If you need to re-import your custom word:

1. From the DragonBar, select **Vocabulary>Import list of words or phrases** and then click **Next**.
2. Click **Add File** and navigate to the text (.txt) file containing the list of words and phrases you exported..
3. Select the file, and then click **Open** and click Next to let Dragon analyze the file.
4. Continue to click **Next** until the import completes.

Exporting/importing custom commands (optional)

1. From the DragonBar, select **Tools>Command Center**.
2. Select **Mode>Manage**.
3. To export only custom commands, choose **User-defined** in the **Group** drop-down list.
If you do not see **User-defined** commands in the drop-down list, you do not have any custom commands.
4. Click the plus sign (+) to expand the list of commands.
5. Select the check box next to the commands to export.
6. Click **Export**. Remember this location.

If you need to re-import your custom commands:

1. From the DragonBar, select **Tools>Command Browser**.
2. From the Command Browser menu, select **MyCommands>Import**.
3. Navigate to the data (.dat) file containing the custom commands you exported.
4. Select the file, and then click **Open**.
5. Select the commands you want to import, and then click **Import**.
6. Click **OK**.

Upgrading to Version 16

Dragon supports automatic upgrades from the Dragon version 13, 14 and 15.

You do not need to uninstall your existing version first. Dragon also retains your custom words and commands. If you are using a Dragon edition where Nuance Management Center/NMS mode is disabled (Standalone mode), Dragon then upgrades your user profiles when you open them.

To upgrade:

1. Close any open programs.
2. If you're running an anti-virus program, turn it off until the installation completes.
3. If you have not already done so, download `Dragon.exe`, then double-click to run the installer. The installation begins immediately and the requested files are downloaded and installed.
4. If prompted, install the Microsoft .NET Framework 4.8.
You may need to restart the computer after installing the .NET Framework.
5. In the Dragon InstallShield wizard, click **Next** to begin the Dragon installation.
6. Read the license terms and click the radio button to indicate you agree to the terms.
7. Click **Next** to proceed to the next screen.
8. Enter the Dragon 16 product serial number, then click **Next**.
9. Select your region and, optionally, select the **Advanced** check box to change the installation directory.
10. Click **Next**.
 - a. If you selected the **Advanced** check box, installation directory, click **Change**.
 - b. Browse to the directory where you want to install Dragon.
 - c. Click **Next**.
11. Click **Install**.
The installation begins.
If you selected check boxes next to options in the Advanced screen, a screen appears, allowing you to customize these settings.
12. If you upgraded to one of the following editions, [Activate Dragon](#):
 - Dragon Professional (single user)
 - Dragon Legal (single user)

Activate Dragon

The first time you start Dragon 16, you are prompted to activate the product. If you skip activation, you can launch Dragon in Trial mode five times. After five launches, you must activate Dragon to continue using the product.

These instructions assume you have an internet connection available on the computer where you installed Dragon.

1. Launch Dragon.

The Activation dialog box appears.

2. Select **Activate Product**, and then click **Next**.
3. Dragon prepopulates the field with your serial number. Click **Next** to continue.
4. Click **Finish**.

Dragon is activated.

Dragon file structure

During installation, Dragon creates the following default folders for application and data file storage.

Note: Upgrading Dragon from an earlier version automatically relocates some directories and files.

Windows 10 and 11

Dragon setup log (dgnsetup.log)

C:\ProgramData\Nuance\NaturallySpeaking16\logs

Dragon log

C:\ProgramData\Nuance\NaturallySpeaking16\logs*<Windows_User_Name>*

User profiles

C:\ProgramData\Nuance\NaturallySpeaking16\Users

Upgrade log

C:\Users*<Windows_User_Name>*\AppData\Roaming\Nuance\NaturallySpeaking16
\AppData\Local\Nuance\NS16\RoamingUsers*<display name>**<username>*

Vocabularies and acoustic models

C:\ProgramData\Nuance\NaturallySpeaking16\Data

Custom words and commands

C:\ProgramData\Nuance\NaturallySpeaking16\custom*<Language>*\

Program files

For 32-bit systems	For 64-bit systems
C:\Program Files\Nuance\NaturallySpeaking16\Program	C:\Program Files (x86)\Nuance\NaturallySpeaking16\Program

Help

For 32-bit systems	For 64-bit systems
C:\Program Files\Nuance\NaturallySpeaking16\Help	C:\Program Files (x86)\Nuance\NaturallySpeaking16\Help

Interactive Tutorial

For 32-bit systems	For 64-bit systems
C:\Program Files\Nuance\NaturallySpeaking16\itutorial	C:\Program Files (x86)\Nuance\NaturallySpeaking16\itutorial

Accessing program files

You can access the Dragon client and many associated utilities through the **Start** menu. Their location varies by operating system:

- Windows 10 and 11: Select **Start > All apps > Dragon**.

