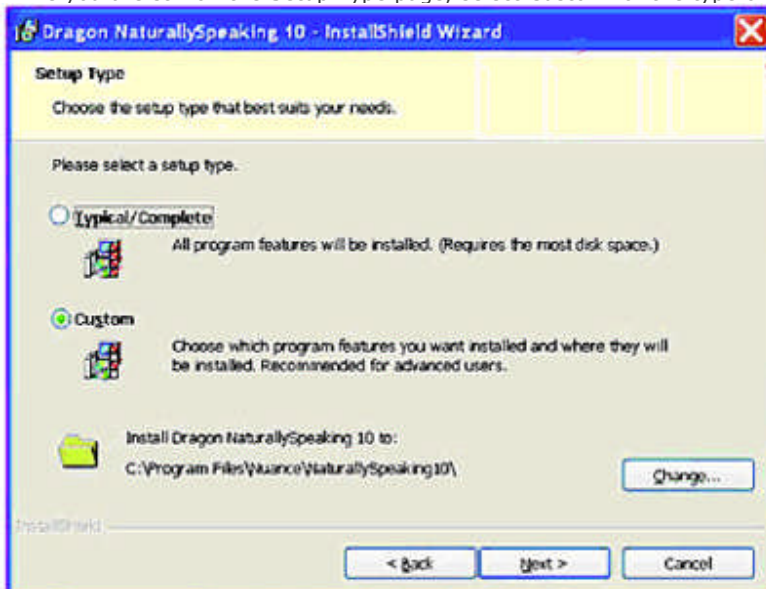


Installing Software — Custom Installation

To install portions of Dragon or to install it for multiple users:

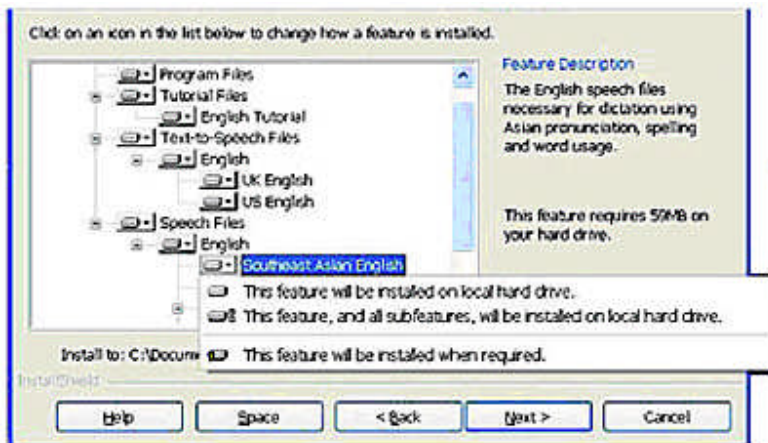
1. Insert the Dragon DVD into your DVD drive. If the installation does not start automatically, use Windows Explorer to find and double-click setup .exe on the DVD.
NOTE: *Windows Vista: When you start the installation on Windows Vista, if you see a message saying A program needs your permission to continue, click Continue to start the installation.*
2. After the Windows Installer begins, it installs two software packages if they are not already installed:
 1. Visual C++ Version 8.0
 2. PowerMic Microphone Drivers (Medical edition only)
3. After the Wizard begins click Next to proceed to the License Agreement page. Read the text and select I accept the terms..., then click Next.
4. Enter your User Name and Organization, and the Serial Number supplied to your installation.
5. (Optional) When the Setup Type page appears, click the Change button and choose where to install the product. If no earlier versions of Dragon are installed on your system, the default directory is: C:\Program Files\Nuance\NaturallySpeaking10. For a list of directories created by installation, see Version 10 File Structure.
6. While you are still on the Setup Type page, select Custom for the type of installation.



NOTE: *If you decide not to install some Dragon components by selecting Custom installation, you can install them later by running the Setup program again and choosing Modify.*

7. Click *Next* and you see a tree where you can select any particular feature of the product and click the down arrow to its left to choose where/when to install it:
 0. Install now, on local hard drive
 1. Install now, with all subfeatures on local hard drive
 2. Install when it is needed on a just-in-time basis

These options are particularly useful for installing multiple languages and/or multiple vocabularies. For example, see the selections for the Southeast Asian English vocabulary shown in the illustration below.



If you are using Dragon Medical, you can choose to install, for example, the Surgery vocabulary under US English, shown in the next illustration.

Installing other languages, dialects, and specialized vocabularies

To install user files for the other languages or dialects supplied with your edition, choose *Custom* on the *Setup Type* page. The user files for each language or dialect contain both spellings and pronunciations specific to that region. For example, users who wish to dictate US English spellings—including users with accents—should install the US (American) English user files.

8. Click Next again and, if you do not have the Professional or Medical edition, skip to the next step. Otherwise, choose any check boxes under Additional options to have additional dialog boxes pop up at the end of the installation, where you can make changes that affect all users dictating on this computer.

OPTION	DESCRIPTION
Modify the application's settings for all users	Displays the Options dialog box at the end of the installation; here you set several options for all users at once (see online Help for details). Useful for an installation in a shared area; for example, in an examining room where multiple healthcare providers can dictate.
Modify the administrative settings	Displays the Administrative Settings dialog box at the end of the installation, where you set up the Roaming User feature, where to backup your files, and who can modify commands/vocabularies.
Formatting options	Displays Formatting dialog box at end of installation, where you apply uniform formatting to all documents dictated at this installation; for example, formats for dates, times, and phone numbers. You also set whether to expand contractions, apply abbreviations, and insert commas automatically. See online Help for more details.

9. Click Next.
10. On the *Ready to Install the Program* page, you can choose:

0. **Enable QuickStart mode for the current user** In QuickStart mode, the product launches on system startup with the Dragon QuickStart icon in the Windows task bar. For more on the QuickStart option, see Version 10 File Structure.
 1. **Upgrade existing speech files to work with the installation** If you select this option, immediately after you reboot, Dragon NaturallySpeaking starts the user upgrade process.
11. Click Install to start the installation.
12. When the installation completes, proceed with any of the following sections that apply to your custom installation:
 0. Modifying application settings for all users on page 16
 1. Modifying administrative settings on page 16
 2. Setting formatting options on page 17
13. If you chose to upgrade speech files earlier, when the message about upgrading your user speech files pops up, click OK. (The message might tell you that the installation will not be complete until after your system is restarted.)
14. Check Yes, check for program updates to download any updates after the setup completes and click Finish to complete the installation.
15. If you were told you need to reboot in order to complete the installation, reboot your computer now.
16. Select Start > All Programs > Dragon NaturallySpeaking 10 > Dragon NaturallySpeaking 10.
17. If you have users from Version 8.x or 9.x that you would like to upgrade before proceeding, refer to Upgrading Existing Users from Versions 8.x and 9.x. Otherwise, if you have no previously existing users, the New User Wizard starts immediately and you can create a user as explained under Creating a New User.