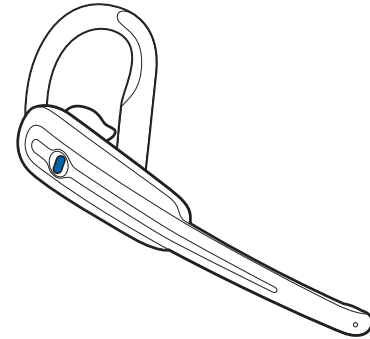


**Plantronics® Calisto™ Headset
with Bluetooth® USB Adapter**
User Guide

Table of Contents

- Package Contents 1
- Product Features 2
- Wearing Your Headset 3
- Powering 4
- Charging 5
- Indicator Lights..... 6
- Pairing 7
- Computer Audio Settings 8
- Using Your Headset 9
- Regulatory Notices 10

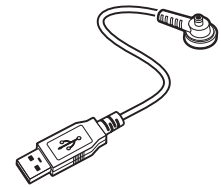
Package Contents



Calisto Headset

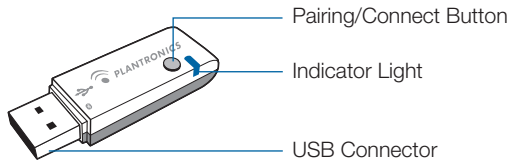
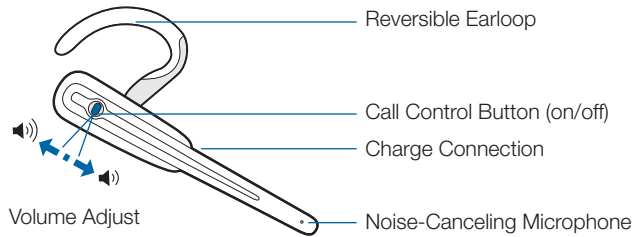


Bluetooth Adaptor

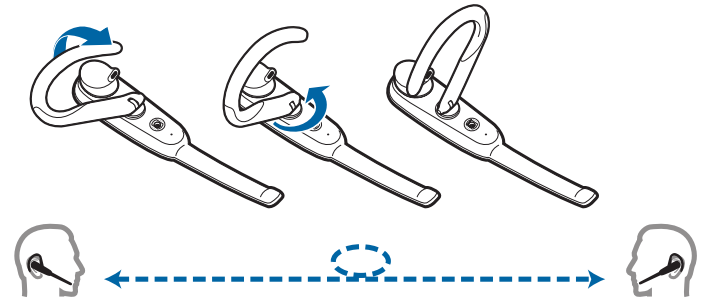


USB Headset Charger

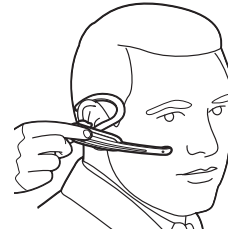
Product Features



Wearing Your Headset



Your headset can be worn on your left or right ear. To switch from one ear to the other, flip the ear loop to the side, and twist around.

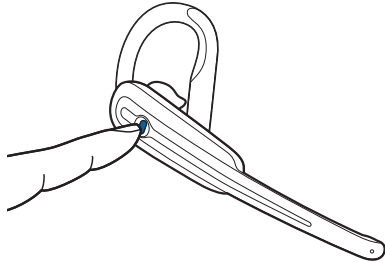


The ear tip should fit comfortably in the opening of your ear canal



Point the mouthpiece toward your mouth

Powering Your Headset and USB Bluetooth Adapter

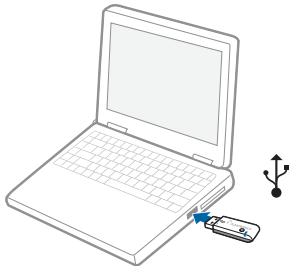


The headset automatically powers up when it is charging.

Powering up: Press and hold Headset button for 2 seconds. 4 ascending beeps will sound when powered on.

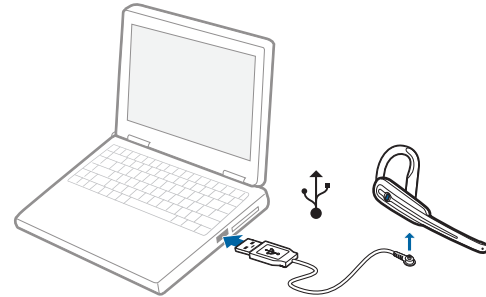
Powering down: Press and hold Headset button for 4 seconds. 4 descending beeps will sound when powered off.

NOTE For your convenience, the headset comes pre-paired with the USB Bluetooth adapter, and (if the headset is within range) will automatically connect to the adapter when powered on.



The USB Bluetooth adapter is automatically powered on upon inserting into the USB port of the computer.

Charging Your Headset



Before using, you must first charge your headset. The indicator light glows solid red while charging and turns solid blue when the headset is fully charged.

Charge the headset for a minimum of 2 hours. Battery talk time is up to 8 hours.

NOTE Do not use headset while charging and do not connect the charger while headset is in use.

Headset Indicator Lights and Alerts

Headset Indicator Lights

Action	Button Action	Sounds	Indicator Lights
Turn headset on	Press and hold for 2 seconds	4 ascending beeps	Flashes blue every 10 seconds
Turn headset off	Press and hold for 4 seconds	4 descending beeps	
Turn microphone on/off	Press for 1 second	1 high beep	
Adjust volume	Press up or down (not inward)	2 beeps when max/min volume reached	

Headset Alerts

Alert	Sounds	Indicator Lights
Low battery	3 beeps every 30 seconds	Flashes red 3 times every 3 seconds
Charging		Glows solid red
Fully charged		Glows solid blue while connected to charger

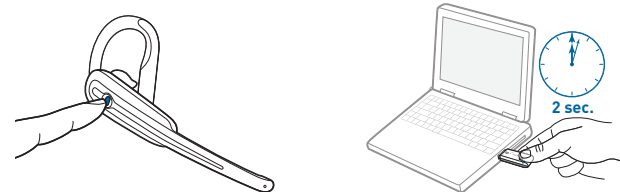
USB Bluetooth Adapter Indicator Lights

Action	Indicator Lights
Connected to the headset	Solid blue
Microphone on	Flashes blue
Disconnected from headset	Flashes purple
Pairing mode	Flashes red and blue

Pairing Your Headset with the USB Bluetooth Adapter

NOTE The headset and USB Bluetooth adapter are paired to each other at the factory. However, if you have purchased a USB Bluetooth adapter separately, or if you wish to use a replacement headset with your existing adapter, the units must be paired.

Insert the USB Bluetooth adapter in the USB port of your computer.



1. To put the headset into pairing mode, you must first power the headset off. You will hear 4 descending beeps when the headset powers off.
2. Once headset is off, remove it from your ear and hold down call control button for 4–6 seconds.
3. Release the button when the indicator lights on the headset begin to flash red then blue.

- To put the USB Bluetooth adapter into pairing mode, Pinch the pairing/connect button for at least 2 seconds until adapter flashes red and blue and begin pairing with your Bluetooth headset.
- When both USB adapter and headset are in pairing mode, and within 30 feet of each other, they should connect.
- The USB adapter show a solid blue light when connected to the headset.

NOTE Take caution when manually pairing the USB adapter. Do not press hard. Please “pinch” with both fingers rather than push on the adapter to avoid damage to the adapter or USB port.

Adjusting Computer Audio Settings

- On your PC, launch the **Sound and Audio Devices** from the control panel button and select the Audio tab.
- Under **Sound Playback** and **Sound Recording** default devices, make sure **Plantronics Bluetooth Adapter** is selected.
- Press **OK**.

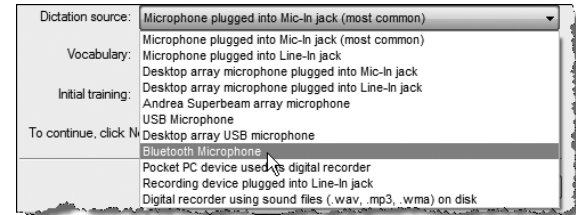
Using Your Headset with Dragon NaturallySpeaking and Dragon Medical

When creating a new user within Dragon using your headset, note the following:

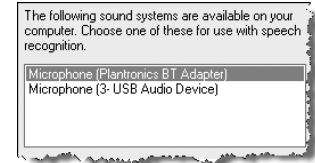
- Make sure the headset is fully charged and powered on (pg. 4) and USB adapter is connected to your computer. You must stay within 33 feet of your computer to use the headset.
- Press the headset button for under 1 second to turn microphone on. When the headset microphone turns on, you will hear 1 beep and the light on the USB adapter will go from solid blue (standby) to flashing blue (active).

NOTE When the headset microphone is on, the battery will drain faster than when the headset is in standby mode. To preserve battery life/talk time you should turn off the headset microphone between uses.

- On the first screen of the **New User Wizard**, make sure to select **Bluetooth Microphone** from the Dictation Source list:



- If Dragon prompts you to “Choose your sound system”, select **Plantronics BT Adapter** from the list and then click **Next** to continue.



- If Dragon tells you that your “Sound level is too low” while reading the text in the New User Wizard, the headset microphone may be turned off. Make sure that it is turned on and try reading the text again.

NOTE If after following the above steps, you still receive the “Sound level is too low” message from Dragon, your Windows sound system may not be setup correctly. Visit <http://support.nuance.com>

- When dictating with Dragon using your headset, please note that when your headset microphone is turned on, you must also turn the microphone on from inside of Dragon. To turn on the microphone from Dragon, press the plus key (+) on the numeric keypad or click the microphone button on the DragonBar.



The microphone is off



The microphone is on

NOTE Even when the Dragon microphone icon is red and horizontal, indicating that the microphone is off, your headset microphone may still be on. When you are done using Dragon, you may want to make sure that your headset microphone is on standby. USB adapter will be solid blue in standby mode and flashing blue when headset microphone is on/active. You can also turn off your headset to conserve battery life.

Regulatory Notices

FCC Requirements Part 15

This device complies with part 15 of the FCC Rules subpart B. Operation is subject to the following two conditions:

- (1) This device may not cause harmful interference, and
- (2) This device must accept any interference received, including interference that may cause undesired operation.

Changes or modifications not expressly approved by the party responsible for compliance could void the user's authority to operate the equipment.

This equipment has been tested and found to comply with the limits for a Class B digital device, pursuant to part 15 of the FCC Rules. These limits are designed to provide reasonable protection against harmful interference in a residential installation. This equipment generates uses and can radiate radio frequency energy and, if not installed and used in accordance with the instructions, may cause harmful interference to radio communications. However, there is no guarantee that interference will not occur in a particular installation. If this equipment does cause harmful interference to radio or television reception, which can be determined by turning the equipment off and on, the user is encouraged to try to correct the interference by one or more of the following measures:

- Reorient or relocate the receiving antenna.
- Increase the separation between the equipment and receiver.
- Connect the equipment into an outlet on a circuit different from that to which the receiver is connected.
- Consult the dealer or an experienced radio/TV technician for help.

EXPOSURE TO RF RADIATION

The internal wireless radio operates within the guidelines found in radio frequency safety standards and recommendations, which reflect the consensus of the scientific community. Independent studies have shown that the internal wireless radio is safe for use by consumers.

Visit www.plantronics.com for more information.

Industry Canada Notice

This Class B digital apparatus complies with Canadian ICES-003.

Cet appareil numérique de la classe B est conforme à la norme NMB-003 du Canada.

Headset:	BlueMax (BUA-100):
Model: B70	IC: 457A-BUA100
For IC: 457A-E3XX	FCC ID: AL8BUA-100
For FCC ID: AL8-E3XX	

CE



© 2008 Plantronics, Inc. All rights reserved. Plantronics, the logo design, Calisto, and Sound Innovation are trademarks or registered trademarks of Plantronics, Inc. The Bluetooth® word mark is owned by Bluetooth SIG, Inc., and any use of the mark by Plantronics, Inc. is under license

56-A11A-10511 (12.08)