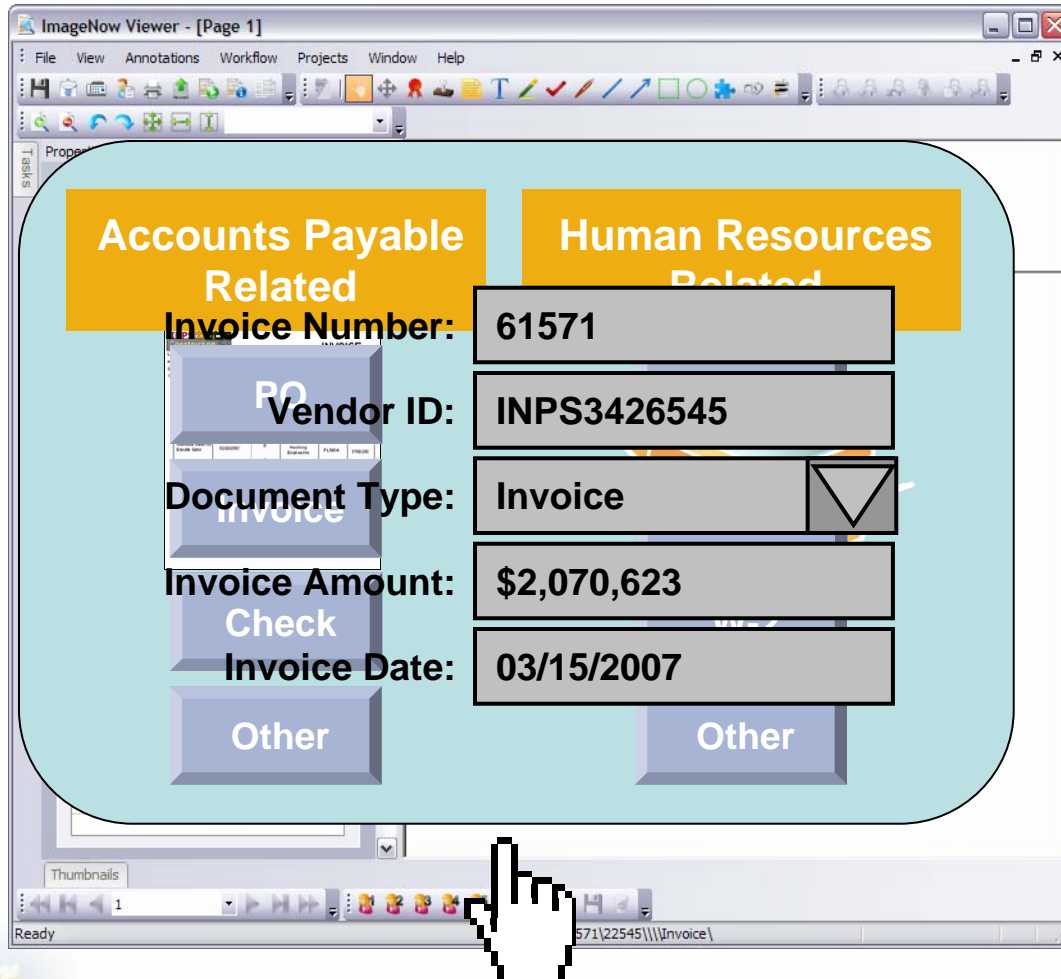




ImageNow Interact for eCopy™



ImageNow Interact for eCopy™ allows users to scan and link documents from their Multi-Functional Peripheral directly into ImageNow using eCopy technology.



1

Scan document using eCopy enabled Multi-Functional Peripheral.

2

On the MFP, choose existing capture profile pre-enabled in ImageNow to classify the document type.

3

Enter and select key linking information to appropriately identify the document and send to ImageNow.

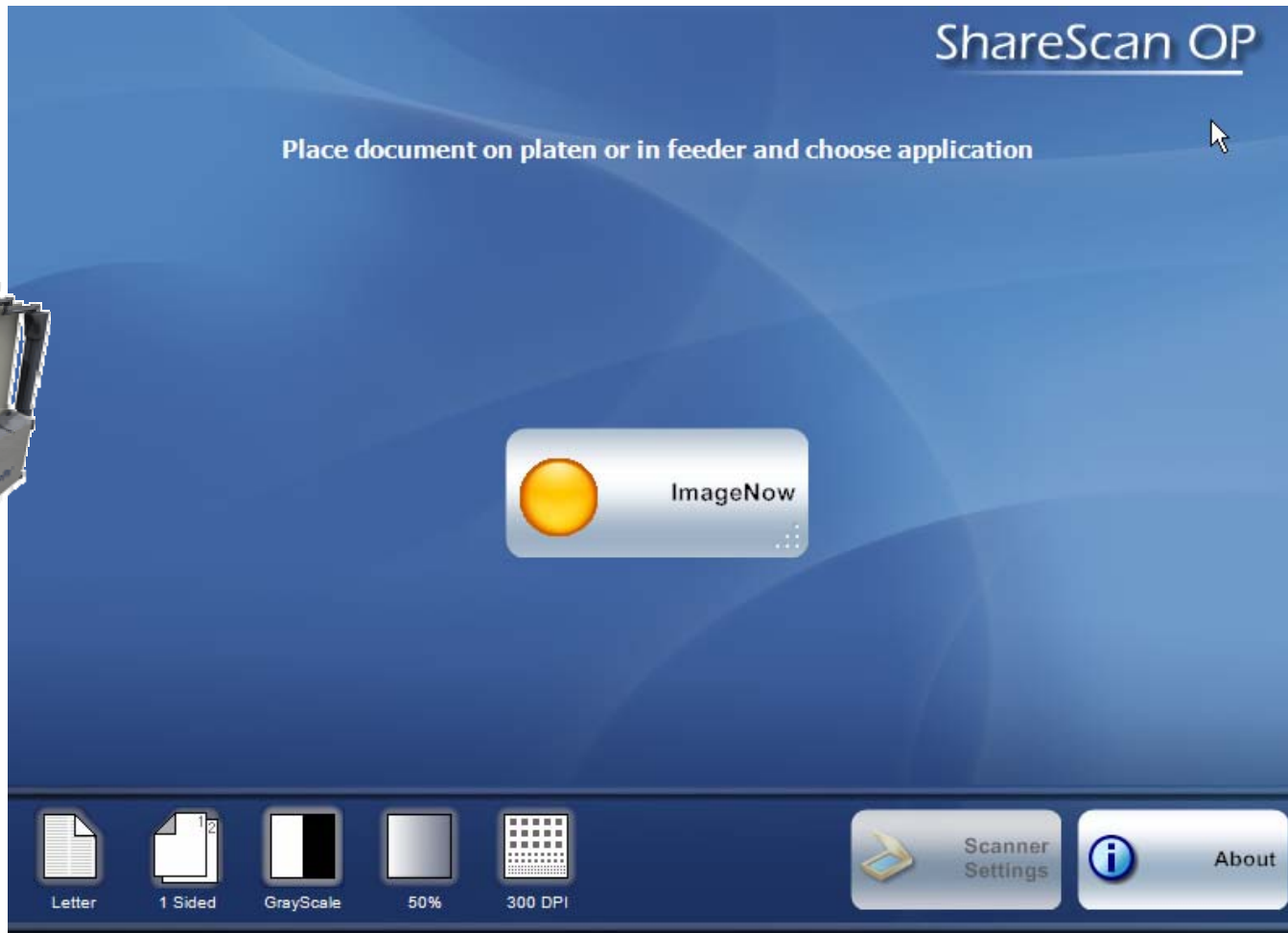
4

The document is instantly available within ImageNow with a single click.

Total time to scan and capture:
seconds.

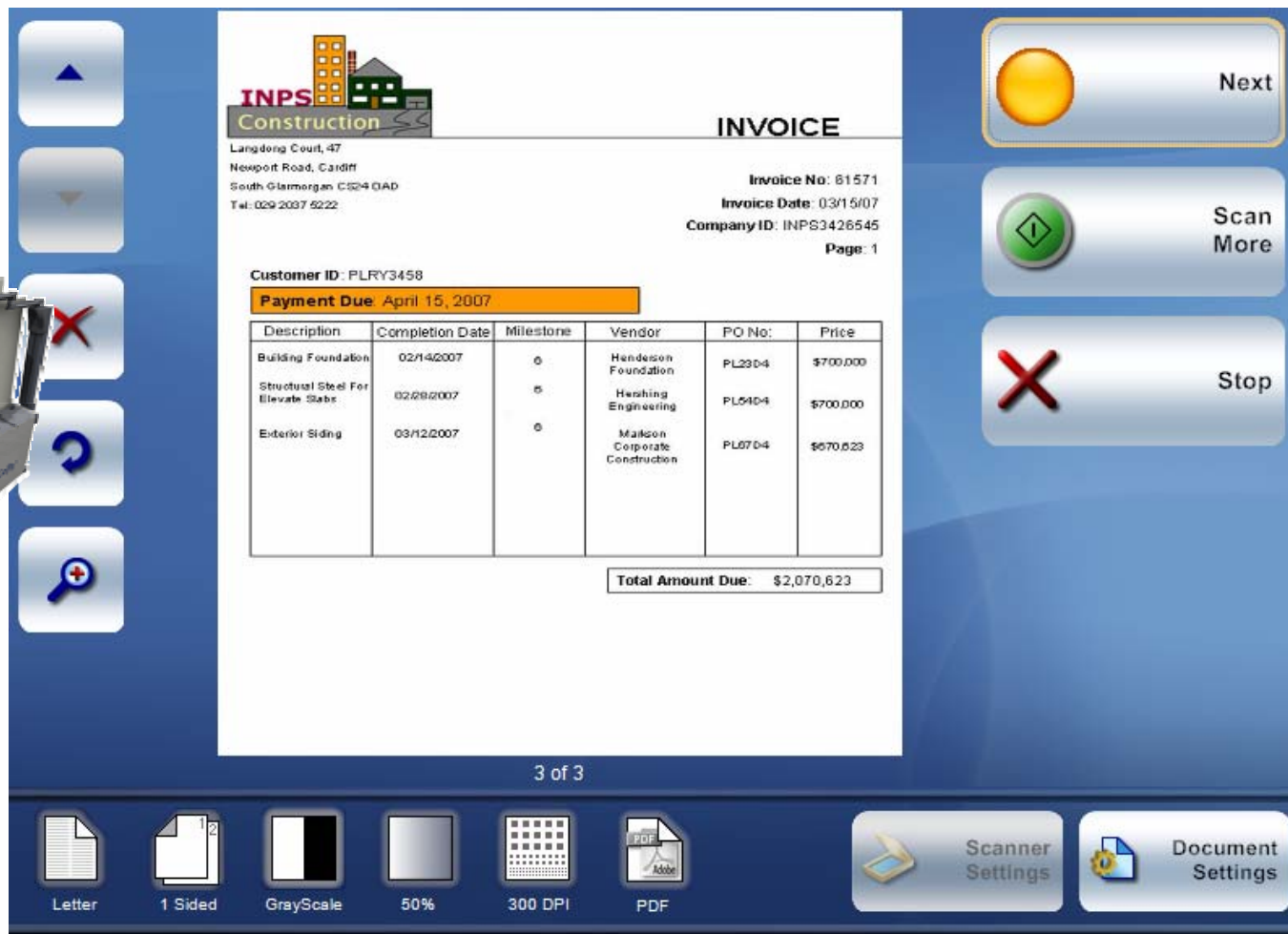
Step 1 ::

Scan document from eCopy enabled Multi-Functional Peripheral and select ImageNow as the application.



Step 2 ::

Verify the scanned document quality to ensure a clean copy.





The screenshot displays the ImageNow Interact software interface. The central area shows a scanned invoice from INPS Construction. The invoice includes the company name, address (Langdeng Court, 47 Newport Road, Cardiff, South Glamorgan, CF24 0AD, Tel: 029 2037 5222), invoice number (61571), date (03/15/07), company ID (INPS3426545), and page number (1). The customer ID is PLY3458, and the payment is due on April 15, 2007. A table lists three items: Building Foundation, Structural Steel For Elevate Slabs, and Exterior Siding, with their respective completion dates, milestones, vendors, PO numbers, and prices. The total amount due is \$2,070,623. The interface includes navigation buttons (Next, Scan More, Stop), a scanner icon, and a bottom toolbar with settings for Letter, 1 Sided, GrayScale, 50%, 300 DPI, and PDF. A '3 of 3' indicator is visible at the bottom center of the document area.


Description	Completion Date	Milestone	Vendor	PO No:	Price
Building Foundation	02/14/2007	○	Henderson Foundation	PL230-4	\$700,000
Structural Steel For Elevate Slabs	02/28/2007	○	Henshing Engineering	PL540-4	\$700,000
Exterior Siding	03/12/2007	○	Malkson Corporate Construction	PL670-4	\$670,623

Total Amount Due: \$2,070,623

Step 3 ::



Log in to ImageNow using your username and password.



 Log In

Username:

Password:

 Cancel  Next



Step 4 ::


Select the appropriate pre-existing ImageNow Capture Profile based on scanned document classification type.



Step 5 ::

Enter the appropriate ImageNow document index key values necessary for the scanned document and select document type.



 Invoice




Invoice Number

Vendor ID

Document Type ▼

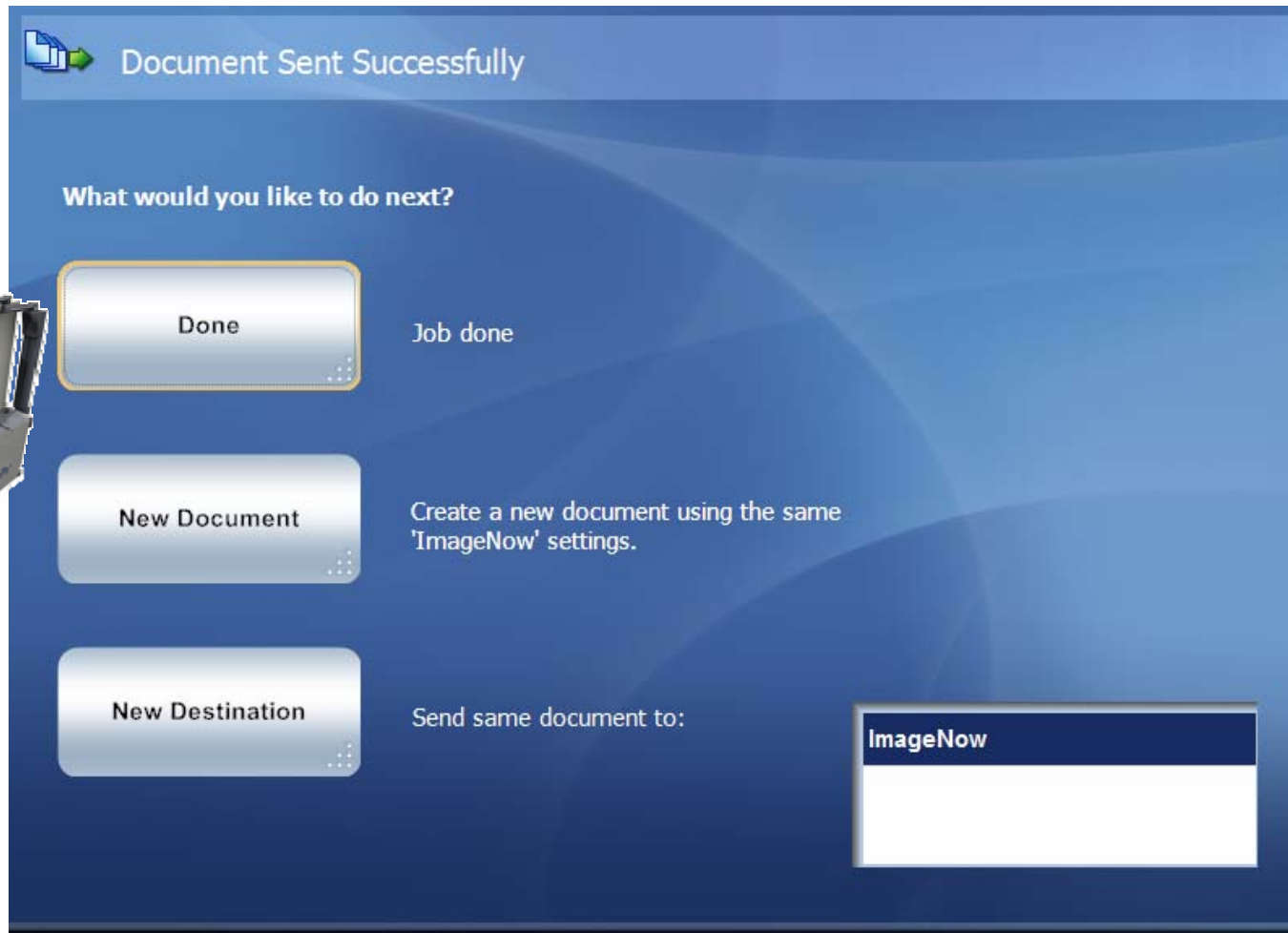
Invoice Amount

Invoice Date

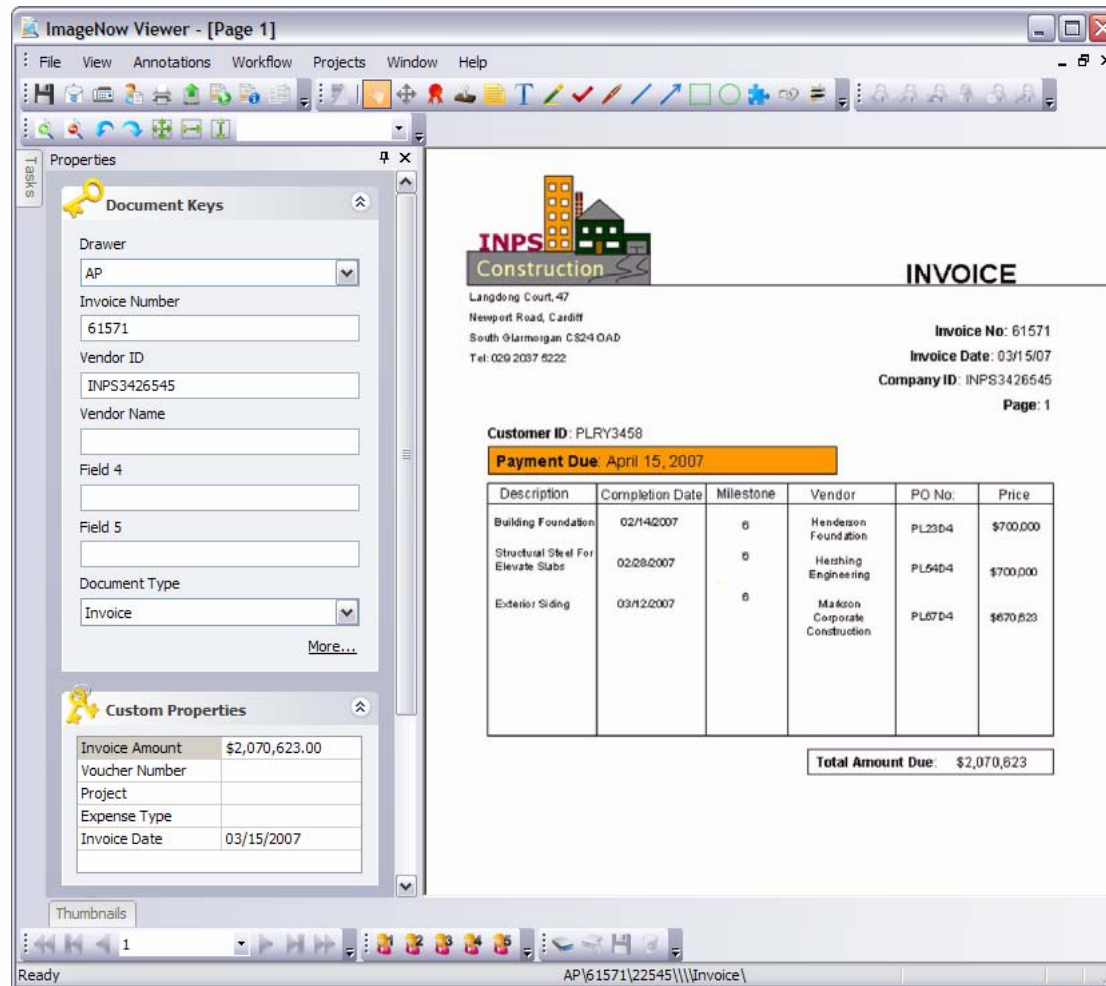
Step 6 ::

Select ImageNow as the destination application and the scanned document is captured into ImageNow.



Step 7 ::

Once in ImageNow, easily perform any document rich feature such as viewing, annotating, managing and routing within ImageNow Workflow.



The screenshot shows the ImageNow Viewer interface. The main window displays an invoice from INPS Construction. The left sidebar contains 'Document Keys' and 'Custom Properties' sections. The invoice content includes company details, invoice number (61571), date (03/15/07), and a table of items with a total amount due of \$2,070,823.

Description	Completion Date	Milestone	Vendor	PO No.	Price
Building Foundation	02/14/2007	0	Henderson Foundation	PL23D4	\$700,000
Structural Steel For Elevate Slabs	02/28/2007	0	Heshing Engineering	PL54D4	\$700,000
Exterior Siding	03/12/2007	0	Mason Corporate Construction	PL67D4	\$670,823

Total Amount Due: \$2,070,823



Why Use ImageNow Interact for eCopy?



Use Existing Multi-Functional Peripheral

Everyone uses copy machines and other multi-functional peripheral devices. Naturally extend the normal business document copying process and easily send documents directly into ImageNow.

Enhance Information Flow

Easily integrate paper documents into electronic workflows and take advantage of the added benefits of document security and management to reduce transaction costs, speed document delivery, and maximize employee productivity.



Hardware Requirements

eCopy software version 4.0 or higher and supporting workstation enabled Multi-Functional Peripheral from major hardware manufacturers including Canon, HP, Ricoh, Sharp, Toshiba, Lanier and Konica-Minolta.

ImageNow Requirements

ImageNow 6.1.2 environment. Configuration includes ability to selectively choose capture profiles for document classification, document index keys to display and default values. Optionally route captured document automatically to ImageNow Workflow.

