

Administration guide

For:

Nuance®
Dragon® Professional
Individual

Nuance®
Dragon® Legal
Individual

Copyright

Dragon Professional Individual.

2015 Nuance Communications, Inc.

This material may not include some last-minute technical changes and/or revisions to the software. Changes are periodically made to the information provided here. Future versions of this material will incorporate these changes.

No part of this manual or software may be reproduced in any form or by any means, including, without limitation, electronic or mechanical, such as photocopying or recording, or by any information storage and retrieval systems, without the express written consent of Nuance Communications, Inc. Specifications are subject to change without notice.

Copyright © 2015 Nuance Communications, Inc. All rights reserved.

Nuance, ScanSoft, the Nuance logo, the Dragon logo, Dragon, DragonBar, NaturallySpeaking, NaturallyMobile, RealSpeak, Nothing But Speech (NBS), Natural Language Technology, Select-and-Say, MouseGrid, and Vocabulary Editor are registered trademarks or trademarks of Nuance Communications, Inc. in the United States or other countries. All other names and trademarks referenced herein are trademarks of Nuance Communications or their respective owners. Designations used by third-party manufacturers and sellers to distinguish their products may be claimed as trademarks by those third-parties.

Adobe and Acrobat are registered trademarks of Adobe Systems Incorporated. AMD is a trademark of Advanced Micro Devices, Inc. America Online is a registered trademark of America Online, Inc., a division of AOL Time Warner. Corel and WordPerfect are registered trademarks of Corel Corporation. iPAQ is a registered trademark of the Hewlett-Packard Company. Lotus and Lotus Notes are registered trademarks of Lotus Development Corporation. Macromedia Flash is a trademark of Macromedia, Inc. Microsoft, Outlook, Windows, Windows NT, Visual Basic, and PowerPoint are trademarks or registered trademarks of Microsoft Corporation. Mozilla, Mozilla Firefox, and Mozilla Thunderbird are trademarks or registered trademarks of the Mozilla Foundation. Palm OS is a registered trademark of PalmSource, Inc. or its affiliates. Panasonic is a registered trademark of the Matsushita Electric Industrial Co., Ltd. Pentium is a registered trademark of Intel Corporation. Sony and Memory Stick are registered trademarks of the Sony Corporation. Voice It, the Voice It logo, and Voice It Link are trademarks or registered trademarks of VXI Corporation.

Disclaimer

Nuance makes no warranty, express or implied, with respect to the quality, reliability, currency, accuracy, or freedom from error of this document or the product or products referred to herein and specifically disclaims any implied warranties, including, without limitation, any implied warranty of merchantability, fitness for any particular purpose, or non-infringement.

Nuance disclaims all liability for any direct, indirect, incidental, consequential, special, or exemplary damages resulting from the use of the information in this document. Mention of any product not manufactured by Nuance does not constitute an endorsement by Nuance of that product.

Notice

Nuance Communications, Inc. is strongly committed to creating high quality voice and data management products that, when used in conjunction with your own company's security policies and practices, deliver an efficient and secure means of managing confidential information.

Nuance believes that data security is best maintained by limiting access to various types of information to authorized users only. Although no software product can completely guarantee against security failure, Dragon software contains configurable password features that, when used properly, provide a high degree of protection.

We strongly urge current owners of Nuance products that include optional system password features to verify that these features are enabled! You can call our support line if you need assistance in setting up passwords correctly or in verifying your existing security settings.

Published by Nuance Communications, Inc., Burlington, Massachusetts, USA

Visit us on the Web at www.nuance.com. Links to our international web sites are shown there.

Visit Nuance Healthcare on the Web at www.nuance.com/healthcare.

Contents

Contents	5
Chapter 1: Introduction to Dragon Professional Individual	9
Getting started with Dragon Professional Individual	9
Creating Windows shortcuts to User Profiles and Vocabularies	11
Using multiple acoustic models with a User Profile	12
Installing, modifying and upgrading Dragon	15
Chapter 2: Preparing to Install Dragon	16
Preparing for an installation or upgrade	16
Installation checklist	17
Dragon system requirements	17
Storage space considerations	19
Coexistence with other Dragon products	19
Chapter 3: Installing Dragon	22
Installing Dragon on a single PC	22
Post-Installation Considerations	23
Cleaning up after uninstalling Dragon Professional Individual	24
Dragon file structure	24
Turning off voice-enabling of menus and other interface controls	25
Chapter 4: Upgrading Dragon	28
Upgrading Dragon: overview	28
What you should know before upgrading from a previous version	28
Installing on or upgrading to Windows 7, Windows 8.x, or Windows 10	29
Preparing to upgrade Dragon	30
Steps to upgrade your Dragon version	31
Manually loading user profiles from a previous Dragon version	33
Upgrading multiple User Profiles	33
Upgrading User Profiles that use third-party vocabularies	36
Chapter 5: Working with Web applications	40
About the Dragon Web Extension	40
Installing and enabling the Dragon Web Extension	41
How to tell if the Dragon Web Extension is Enabled	47
Conditions for loading the Internet Explorer compatibility module and the Dragon Web Extension	49
Chapter 6: Customizing a User Profile	52
Adding words, commands, or Vocabularies to User Profiles	52
Creating the Data Distribution Directory	52
Nsadmin utility for new words, Vocabularies, and commands	54
Starting the nsadmin command line utility	54
Adding custom words from a command line	55

Adding and removing custom Vocabularies from a command line	57
Adding custom commands from a command line	59
Using paths with nsadmin	61
Chapter 7: Maintaining a Dragon installation	62
Maintaining Installations	62
Checking the optimization status of a User Profile	62
Running Acoustic and Language Model Optimizer on User Profiles	64
Running the Acoustic and Language Model Optimizer on a multi-core computer	64
To run the acoustic and language model optimizers on User Profiles:	64
Exporting and Importing User Profiles	65
The Dragon log file	66
Handling Dragon Error Messages	67
Working with the Usability Log	68
Accessing the Dragon Knowledge Database	68
Managing end-user administrative privileges	69
Chapter 8: Working with Custom commands	70
Managing and Securing Custom Commands	70
Using the Convert XML to DAT tool	70
Using the MyCommands Protection Utility	71
Chapter 9: Commands that perform actions based on the application state	74
About Structured Commands	74
Structured Commands Samples	75
Importing Structured Commands	77
Chapter 10: Configuring administrative features in Dragon	80
Summaries of Administrative Settings Dialog Boxes	80
Administrative Settings: Miscellaneous tab	80
Administrative Settings: Scheduled Tasks tab	82
Glossary	85
.DRA files (definition)	85
Accuracy Center (definition)	85
Accuracy Tuning (definition)	85
Acoustic Optimizer (definition)	85
Advanced Scripting (definition)	85
Command Browser (definition)	86
Correction menu (definition)	86
Command Mode (definition)	86
Dictation Box (definition)	86
Dictation Mode (definition)	86
Dictation Source (definition)	86
DragonPad (definition)	87
Language Model optimization (definition)	87

Language Model Optimizer (definition) 87

Normal Mode (definition) 87

Numbers mode (definition) 88

QuickStart (definition) 88

Recognition Modes (definition) 88

Spell Mode (definition) 88

User Profile (definition) 88

Chapter 1: Introduction to Dragon Professional Individual

The Dragon Professional Individual Administrator guide is intended for administrators that deploy and manage installations of:

- Professional Individual
- Professional edition
- Legal edition

The administrator guide refers to these products generically as Dragon Professional Individual. We will mention when a feature applies specifically to one or more of these products editions.

Use the Dragon Administrator guide to install Dragon Professional Individual, and to configure and manage the many features, tools, and User Profiles in Dragon Professional Individual. To install Dragon Professional Individual and perform the tasks in this guide, you must have administrator access to the workstations in your network.

Dragon Professional Individual contains new features and improvements that enhance the ability to talk to, control, and interact with a computer. This section contains general information about Dragon and the exciting new features of Dragon Professional Individual.

Getting started with Dragon Professional Individual

For information about new features, fixes, and changes, see the Release notes.

Dragon on the Web

The Nuance web site (www.nuance.com) gives you access to many resources, including frequently asked questions, usage tips, customer stories, customer service information, and technical support content.

[Installing, modifying and upgrading Dragon Professional Individual](#) and [Installation checklists](#)

View information on the different ways to install, modify, and upgrade Dragon Professional Individual.

[Adding words, commands, or vocabularies to User Profiles](#)

You use the **nsadmin** command line utility when you want to make new words, customized vocabularies or new commands available to all User Profiles on a particular *Dragon Professional Individual* installation.

[Using the Convert XML to DAT tool](#) and the [MyCommands Protection Utility](#)

[Using Structured Commands](#)

Dragon Professional Individual - include an extension to Text-and-Graphics commands that let you to set the values of variables in text blocks based on voice input.

Dragon Professional Individual [System requirements](#)

What's new for administrators

Upgrading to Dragon Professional Individual

You can upgrade from Dragon Professional 12.x and 13 and lower editions to Dragon Professional Individual.

For details, visit [Upgrading Dragon](#).

Specify a region when you install Dragon

When you install Dragon, you specify your geographic region.

You can specify a single region or choose to install files for all regions.

The benefits of specifying a region are:

- The installation process only installs the files for the region you specify.
- The installation requires less disk space.
- The installation process is quicker than in past versions of Dragon.

Updated system requirements

Updates to the system requirements include support for:

- Microsoft® Internet Explorer 9 or higher or the current version of Chrome or Firefox for Dragon Web Extensions.
- Microsoft Windows 10

For details, see [Dragon system requirements](#).

Open a User Profile after exiting from the Administrator Settings screens

After you view and exit from the Administrator Settings screens, Dragon opens your User Profile.

Creating Windows shortcuts to User Profiles and Vocabularies

If Dragon Professional Individual is shared with other people, or if a person has more than one User Profile, you can create Windows Shortcuts on the Desktop to start Dragon Professional Individual and open particular User Profiles. If User Profiles have multiple Vocabularies, you can also specify the Vocabulary to open.

To create a shortcut to a User Profile and Vocabulary

1. Create a new shortcut for Dragon Professional Individual.
2. Right-click the Dragon Professional Individual shortcut icon on the Windows Desktop and then click Properties to open the icon's Properties dialog box.
3. Click the Shortcut tab of the Properties dialog box.

In the target box, at the end of the path type "*natspeak.exe /user <User Profile name>*". The text in the target box should look similar to the following line:

```
"C:\Program Files (x86)
\nuance\naturallyspeaking14\Program\natspeak.exe/user "David"
```

For Vocabularies

To specify a Vocabulary, follow the User Profile name with *"/Vocabulary"* and the name of the Vocabulary. The text in the target box should look similar to the following:

```
"C:\Program Files (x86)
\nuance\naturallyspeaking14\Program\natspeak.exe" /user "David"
/Vocabulary General
```

If the User Profile or Vocabulary name contains a space, enclose the name in quotation marks. For example, enter: */user "Mike Workman" /Vocabulary "General - Medium"*

If the User Profile name contains a space, enclose the name in quotation marks. For example, type: */user "Mike Workman"*

4. Click **OK**.

When finished, double-click the shortcut icon to start Dragon Professional Individual. The User Profile opens along with the Vocabulary specified.

Tip

It is possible to add a shortcut to the top of the Start menu by dragging the shortcut icon onto the Start button.

Using multiple acoustic models with a User Profile

If the computer that an end-user dictates on meets certain system requirements, Dragon Professional Individual uses two acoustic models with a User Profile. Using two acoustic

models instead of one improves recognition and dictation accuracy. Acoustic models that can be added in pairs to a User Profile are called BestMatch V models.

Any time you add a new dictation source to a User Profile that uses two BestMatch V models, the dictation source will also be associated with the two models.

A User Profile with two BestMatch V models uses more computer resources, including RAM memory, than a User Profile with one acoustic model. Dragon Professional Individual uses two BestMatch V models on a multi-core computer with at least 4 GB RAM. Dragon Professional Individual recognizes when it is installed on a computer that meets these system requirements and selects the BestMatch V acoustic model as the default.

Acoustic Optimization for User Profiles with BestMatch V acoustic models

BestMatch V is normally the default acoustic model if the system has at least 4GB of RAM.

If a User Profile includes BestMatch V models, you must run the Acoustic and Language Model Optimizer (ACO) on a computer with multi-core processors. Dragon Professional Individual uses two BestMatch V models only on a multi-core computer with at least 4 GB of RAM.

If the ACO processes a User Profile that was created on a computer with multi-core processors, the optimizer always selects the BestMatch V models to optimize.

Multiple acoustic models and User Profiles on single and multi-core computers

If an end-user creates a User Profile on a multi-core computer, when the end-user opens the User Profile on a single-core computer, Dragon uses the first acoustic model for recognition. Dragon does not load the second acoustic model.

If an end-user creates a User Profile on a single-core computer, when the end-user opens the User Profile on a multi-core computer, Dragon uses the single acoustic model for recognition.

If an end-user selects BestMatch V models for a User Profile and trains the profile on a multi-core computer, when the end-user opens the User Profile on a single-core computer, Dragon displays the following warning message:

"Your computer has a single core processor. You have opened a User Profile created on a computer with a multi-core processor.

Dragon Professional Individual will work normally on this computer but you may see some change in performance and accuracy".

Installing, modifying and upgrading Dragon

Basic steps To install Dragon Professional Individual:

1. Be sure your computer meet the [system requirements](#).
2. Prepare for the installation or upgrade by reviewing the installation checklist and exporting your existing profile(s) if any (and, separately, your existing custom words and custom commands, if desired), and choosing your type of installation.
3. Install or upgrade the software by choosing the type of installation. See the table below for installation options.
4. Become familiar with the [Dragon file structure](#) and carry out post-installation tasks.

Note: When one installs Dragon Professional Individual, installation instructions appear in the primary language for the product. One cannot install Dragon using a language other than the primary language. For example, when an administrator installs the German software, installation instructions appear in German.

Installation topic	Topic link
Installation checklists	<ul style="list-style-type: none"> ■ Installation checklists
System requirements	<ul style="list-style-type: none"> ■ System requirements
Preparing for an installation or upgrade	<ul style="list-style-type: none"> ■ Preparing for an installation or upgrade
Installing Dragon on a single computer This topic describes the basics steps for installing <i>Dragon</i> on a single computer.	<ul style="list-style-type: none"> ■ Installing on a single computer
Installing using the Windows Installer (MSI) <i>Dragon</i> includes a native Windows Installer (MSI) that lets an administrator customize installations as well as install across a network to multiple client computers. In addition, an administrator can use this service to upgrade, modify, repair, or remove an existing <i>Dragon</i> installations.	<ul style="list-style-type: none"> ■ Using the Windows Installer (MSI) to install Dragon
Upgrading from a previous version An administrator can upgrade installations to Dragon Professional Individual from Dragon 12.x and 13	<ul style="list-style-type: none"> ■ Upgrading from a previous version

Chapter 2: Preparing to Install Dragon

This section contains information on the prerequisites for installing Dragon, Dragon system requirements, and information on which Dragon products you can install on the same computer.

Preparing for an installation or upgrade

Before installing, modifying, or upgrading Dragon Professional Individual:

- Close all open applications.
- Turn off or disable any antivirus software until installation is complete (installation can sometimes trigger a false virus report).
- Read the [Installation Checklist](#).

Installation considerations

- Be sure your system meets the requirements before attempting to install Dragon Professional Individual. See [Dragon system requirements](#)
- Administrator rights are not required to create a profile or use the software after installation.
- These restrictions also apply to an upgrade installation: On Windows 7, Windows 8, Windows 8.1, Windows 10, Windows Server 2008 R2, and Windows Server 2012, if you want to create a *Dragon* profile for a *Windows limited user* (an account with restricted privileges), you must log on to Windows using that limited user account, then create the *Dragon* profile. If, while logged in as Administrator, you create a *Dragon* profile for a Windows limited user, the limited user will not be able to access that *Dragon* profile.
- You are permitted to create multiple profiles, so long as each profile is for one person. If someone else wants to create or use another profile, that person must purchase a separate license for Dragon Professional Individual. Volume license agreements are available.

File Structure After Upgrade

Upgrading from Dragon 12.x and 13 automatically relocates some Dragon directories and files.

For information, see [Dragon File Structure](#).

Installation checklist

Questions to consider and, if applicable, discuss with your team or consultant:

- Do all of your workstations meet the recommended system requirements for Dragon?
- Which features will you install on each computer?
 - Which vocabularies do you need to install on each computer?
 - What location will you designate as the profile backup directory?
 - Where will you place the data distribution directory for distributing word lists and command sets?
 - Will you be collecting data for the Acoustic and Language Model Optimizer?
 - Will you restrict end-users from modifying commands and vocabularies?

Note: Where you store Dragon profiles may depend on various factors. Each profile requires about 277 MB hard disk space.

Dragon system requirements

During the installation process, the software checks that your system meets the following requirements. If they are not met, Dragon will not be installed.

Note: as of its release, Dragon 14 supports Microsoft Office 2010, and 2013.

Supported Operating Systems:

- Microsoft Windows 7, 32-bit and 64-bit
- Microsoft Windows 8 & 8.1, 32-bit and 64-bit
- Microsoft Windows 10, 32-bit and 64-bit
- Microsoft Windows Server 2008 R2
- Microsoft Windows Server 2012, **64-bit only**

RAM:

Minimum **2 GB for the 32-bit** versions of Microsoft Windows 7, Windows 8, Windows 8.1, and Windows 10.

- Microsoft Windows 7
- Microsoft Windows 8
- Microsoft Windows 8.1
- Microsoft Windows 10

Minimum **4 GB for all other supported operating systems.**

- Microsoft Windows 7, 64-bit
- Microsoft Windows 8, 64-bit
- Microsoft Windows 8.1
- Microsoft Windows 10
- Microsoft Windows Server 2008 R2
- Microsoft Windows Server 2012

CPU:

Minimum **2.2 GHz** Intel® dual core or equivalent AMD processor. **Note:** Faster processors yield faster performance.

Free hard disk space:

4 GB

Audio devices:

- A sound card supporting 16-bit recording.
- A Nuance-approved microphone: headset microphone (USB or not), Bluetooth microphone (Enhanced/wideband works best), or user-facing built-in laptop microphone (single or multiple element). See support.nuance.com/compatibility .
- If you wish to make recordings for Dragon to transcribe: a voice recorder or smart-phone app supporting one of these formats: .mp3/.m4a/.wav/.wma/.dss or .ds2 .

Other requirements:

- Internet Explorer 9 or higher, or the current version of Chrome or Firefox, for online Help.
- A DVD-ROM drive for installation, unless you purchase the Dragon web installer from Digital River.

- An Internet connection to automatically activate the software (a quick anonymous process) and, if you purchased the Dragon *web installer* from Digital River instead of a DVD, to install the software.

Storage space considerations

Each end-user of Dragon must have his or her own user profile. This is a set of files in which Dragon stores information about each end-user's voice, frequently-used words and phrases, optional settings, and custom commands (if applicable). Each computer on which Dragon is used needs to have enough space for the necessary user profile(s).

The space needs to exist on:

- Stand-alone installations where end-users work on dedicated computers.

The settings in the **Data** tab of Dragon's **Options** dialog box control how much Acoustic Optimizer data Dragon retains locally:

1. To set the number of minutes of audio to retain locally, click the **Archive size...** button and position the slider.
2. To turn off retaining this data locally, check the **Conserve disk space required by User profile (for portability)** option.

Coexistence with other Dragon products

Coexistence with previous versions of Dragon

You can have only *one version of Dragon* installed on your system.

Note: Running Dragon 12.x or Dragon 13.x concurrently with Dragon Professional Individual is not supported.

Coexistence with Dragon Software Development Kit (SDK) Client Edition

You can install *Dragon SDK Client Edition* (DSC) on the same computer where Dragon Professional Individual is installed. In addition, *Dragon Professional Individual* and *Dragon SDK Client Edition* can share user profiles.

If the Dragon SDK Client Edition and Dragon Professional Individual are on the same computer, and you uninstall DSC, you may not be able to start Dragon Professional Individual. To fix this issue, run the **Repair** option from the installation DVD (put the DVD into the DVD drive and start the installation process then, when prompted, select Repair and follow the instructions on the screen.) Note: in the case of a Web installation, a repair option is not included, so you must uninstall Dragon (keeping your speech files), then install Dragon again.

If you are running Dragon SDK Client Edition, you cannot display the DragonBar.

Note: Dragon Professional Individual can coexist with *Dragon SDK Client Edition 12.x*.

To run Dragon SDK Client Edition on a computer with Dragon Professional Individual

Note: You must have administrator privileges to perform the following step. In Windows 7, Windows 8.x, and Windows 10, make sure to elevate the command prompt.

1. At a command prompt, type the following command:

```
C:\Program Files (x86)\Common Files\Nuance\dgnsvc.exe /products
```

2. Choose the product that you want to use.

To run Dragon Professional Individual on a computer with Dragon SDK Client Edition

Same as above.

You must have administrator privileges to perform the following step. In Windows 7, Windows 8.x, and Windows 10, make sure to elevate the command prompt.

At a command prompt, type the following command:

```
C:\Program Files\Nuance\NaturallySpeaking14\Program\natspeak.exe /fixguids
```

1. At a command prompt, type the following command:

```
C:\Program Files (x86)\Common Files\Nuance\dgnsvc.exe /products
```

2. Choose the product that you want to use.

To switch between Dragon Professional Individual and Dragon SDK Client Edition

Same as above.

1. At a command prompt, type the following command:

```
C:\Program Files (x86)\Common Files\Nuance\dgnsvc.exe /products
```

2. Choose the product that you want to use.

Chapter 3: Installing Dragon

This section provides information on how to install Dragon, post-installation tasks, the Dragon file structure, sample commands.

Installing Dragon on a single PC

This topic presents the basic steps for installing Dragon Professional Individual on a single computer.

Notes:

- You must have Windows Administrator rights to install or uninstall Dragon Professional Individual. For more information about how Administrator rights impact the creation of Dragon user profiles, see [Preparing for an installation or upgrade](#).
- The installation process does not present the QuickStart option. If you wish to enable this option, you can do so only after Dragon is installed.
- In editions that have more than one language, the installation process uses the software's primary language. You cannot install Dragon using a language other than the primary language. For example, when you install the German software, the installation interface will be in German.
(If you attempt to use the setup executable with the command-line option `/l` to install using a non-primary language, the installation process uses the primary language, ignoring the `/l` option.)

Installing on Windows 7, Windows 8.x, or Windows 10

For information about installing the product on Windows 7, Windows 8.x, or Windows 10, refer to [Installing or Upgrading to Windows 7, Windows 8.x, or Windows 10](#)

Installing Dragon on a single computer

1. To install from a DVD, insert it your DVD drive and auto-run should start automatically. If you purchased Dragon as a download, you will have received an email from Digital River with a

URL and serial number: download the setup.exe file from that URL then double-click it.

2. After the installation Wizard begins, click **Next** to proceed to the **License Agreement** screen. Read the text of the agreement and select **I accept...**, then click **Next**.
3. Enter your customer information—User Name and Organization—then the Serial Number supplied with your DVD or download of Dragon, then click **Next**.
4. On the **Region Selection** screen, select your desired region and Dragon only installs the files required for that region. (Then, if you want to change the installation directory, click **Advanced**.) Click **Next**. If there is no previous version of Dragon on your PC, the default directory on Windows 8, Windows 8.1, and Windows 10, 64-bit operating systems is:
C:\Program Files (x86)\Nuance\NaturallySpeaking14
7. Click **Next**.
8. On the next screen, click **Install**.
9. Continue following the on-screen instructions. The setup program will install the necessary files on your computer.
10. When installation of Dragon is complete, the installer displays the completion screen (verify that it indicates success). By default, the '**Check for updates when setup is finished**' check box is selected. Click **Finish**.
11. On the **Product Registration** screen, choose to register Dragon online now or to have Dragon remind you to register in seven days, then click **OK**. You must register the product to use Nuance technical support.
12. To start Dragon, select **Start > All Programs > Dragon > Dragon**. Alternately, you can double-click on the Nuance desktop shortcut, or, in Windows 8.x and Windows 10, in the Metro interface, choose **Apps > Dragon**.

Activating Dragon

The first time you start *Dragon*, you will be prompted to activate your copy of *Dragon*. If you do not activate, *Dragon* will stop working after you start it 5 times.

Post-Installation Considerations

Once you have installed or upgraded Dragon, the following may be of interest to you you might want to carry out some of these tasks before you proceed:

- [Dragon File Structure](#)
- [Turning off Dragon's use of Microsoft Active Accessibility Service](#)
- [Cleaning up after uninstalling Dragon](#)

Cleaning up after uninstalling Dragon Professional Individual

The following files will remain on your computer after you uninstall Dragon Professional Individual.

C:\Windows\Speech

- VText.dll
- Vdict.dll
- WrapSAPI.dll
- XTel.dll
- Xcommand.dll
- Xlisten.dll
- Xvoice.dll
- spchtel.dll
- speech.cnt
- speech.dll
- speech.hlp
- vcauto.tlb
- vcmd.exe
- vcshl.dll
- vtxtauto.tlb

Dragon installs these files for Microsoft SAPI4 support. If you do not have other speech applications that require SAPI4, you can safely remove these files manually. If you have installed other speech applications that require SAPI4 support, you may need to re-install those applications if you remove the files.

Dragon file structure

During installation, Dragon sets up the following default folders for application and data file storage.

Note: Upgrading Dragon from an earlier version automatically relocates some directories and files.

Windows 7, Windows 8.x, and Windows 10
Dragon setup log (dgnsetup.log)

C:\ProgramData\Nuance\NaturallySpeaking14\logs

Dragon log

C:\ProgramData\Nuance\NaturallySpeaking14\logs\<Windows_User_Name>

User Profiles

C:\ProgramData\Nuance\NaturallySpeaking14\Users

Upgrade log

C:\Users\<Windows_User_Name>\AppData\Roaming\Nuance\NaturallySpeaking14

Vocabularies and Acoustic Models

C:\ProgramData\Nuance\NaturallySpeaking14\Data

Custom words and commands

C:\ProgramData\Nuance\NaturallySpeaking14\custom\<language>\

Program files

For 32-bit systems

C:\Program Files\Nuance\NaturallySpeaking14\Program

For 64-bit systems

C:\Program Files (x86)\Nuance\NaturallySpeaking14\Program

Help

For 32-bit systems

C:\Program Files\Nuance\NaturallySpeaking14\Help

For 64-bit systems

C:\Program Files (x86)\Nuance\NaturallySpeaking14\Help

Interactive Tutorial

For 32-bit systems

C:\Program Files\Nuance\NaturallySpeaking14\itutorial

For 64-bit systems

C:\Program Files (x86)\Nuance\NaturallySpeaking14\itutorial

C:\Program Files (x86)\Nuance\NaturallySpeaking14\Ereg

C:\Program Files (x86)\Nuance\NaturallySpeaking14\Ereg

Turning off voice-enabling of menus and other interface controls

Dragon Professional Individual uses Microsoft Active Accessibility Service to let you control certain menus and dialog boxes by voice. Without Microsoft Active Accessibility Service, you would be unable to use *Dragon* to select menu commands and dialog box controls with your voice.

If you don't need the ability to click menus, buttons or other application interface items by voice (saying their label preceded by the word "click"), you can turn off this feature; this is one of the ways you can make Dragon work faster.

To turn off the option for all applications

1. Open the **Options** dialog box by selecting **Tools > Options** on the **DragonBar**.
2. Click the **Miscellaneous** tab.
3. Clear the **Voice-enable menus, buttons, and other controls, excluding** check box.
4. Click **OK**. You will need to exit and re-start *Dragon* for this change to take effect.

To turn off the option for specific applications (command-line method)

1. Exit *Dragon*.
2. Open the **nssystem.ini** file in a text editor. By default, **nssystem.ini** is located in:

C:\ProgramData\Nuance\NaturallySpeaking14

(See [Dragon file structure](#)).

3. Under **[MSAA Modules Disabled]**, add a line similar to the following for each relevant application:

`<executable_name>=1`

4. Save and close **nssystem.ini**.
5. Re-start *Dragon*.

For example, for just Microsoft Word and Microsoft Excel, you would add the following lines to **nssystem.ini**:

```
[MSAA Modules Disabled]
```

```
winword=1
```

```
excel=1
```

Note: If you do not know the name of an application's executable file, you can start the application from the Windows **Start** menu and then use the Windows Task Manager to view the list of current applications. The executable names are listed under Image Name on the Processes tab. You can also right-click the application's icon and select the shortcut tab—the **Target** field will provide the name of the executable.

To turn off the option for specific applications (Graphical User Interface method)

1. On the Dragon Bar, select **Tools > Options**.
2. Select the **Miscellaneous** Tab.

3. Make sure the **Voice-enable menus, buttons, and other controls, excluding** box is checked, and open the drop-down list below this box. The list contains installed and running applications, with always the following applications:
 - Microsoft Outlook
 - Lotus Notes
 - Internet Explorer
 - Microsoft Word
 - Microsoft Excel
 - WordPerfect
4. Place a check mark beside the application(s) you want to exclude.
5. Click **OK**.

Chapter 4: Upgrading Dragon

This section contains information on how to upgrade User Profiles, as well as how to upgrade profiles that use third-party Vocabularies.

Upgrading Dragon: overview

Main steps to upgrade a profile to Dragon Professional Individual :

- Based on the version of Dragon being upgraded from, determine how to proceed, including exporting existing profiles for safe-keeping, as well as custom words and commands if desired (see [What you should know before upgrading from a previous version](#)).
- If upgrading to Windows 7, Windows 8.x, or Windows 10, see [Installing on or upgrading to Windows 7, Windows 8.x, or Windows 10](#)
- Carry out one of these procedures:
 - Upgrade multiple profiles (see [Upgrading multiple User Profiles](#))
 - Upgrade profiles that have custom or customized vocabularies (see [Upgrading User Profiles with Custom and Customized Vocabularies](#))

One can use the *User Profile Upgrade Wizard*.

See the Dragon Help for information on exporting and importing custom words and commands.

What you should know before upgrading from a previous version

One An administrator can upgrade to Dragon Professional Individual from Dragon Professional Individual v12.x and 13 and lower editions by following the installation instructions for Dragon Professional Individual, but first, be sure to:

- Export Retain existing user profiles, to be updated after the installation completes.
- Check that it is possible to upgrade from the existing version's edition to the new version's edition the administrator is installing.

The examples in this chapter show how to upgrade from Dragon12.x to Dragon Professional Individual.

For details, see [Upgrading Dragon](#).

- When an administrator installs Dragon Professional Individual , Dragon installs using the primary language for the product. An administrator cannot install Dragon using a language that is different than the primary language. For example, if an administrator installs Dragon Professional Individual , English version, Dragon installs using the English language. If the administrator attempts to use the /1 option with setup.exe to install Dragon Professional Individual using a non-primary language, the installation process uses the primary language for that edition of Dragon and ignores the /1 option.

Installing on or upgrading to Windows 7, Windows 8.x, or Windows 10

You cannot install *Dragon Professional Individual* on Windows Vista, Windows XP, Windows 2000, Windows 2000 Server, or Windows Server 2003.

Upgrade considerations

If you upgrade a computer to Windows 7, Windows 8.x, or Windows 10, and the computer has Version 8.x, 9.x, 10.x, or 11.x of *Dragon* installed, that version of *Dragon* will not work after the upgrade.

For details, see [Upgrading Dragon](#).

Preparing to upgrade Dragon

You can upgrade to Dragon Professional Individual only from the following previous Dragon versions:

- 12
- 12.5
- 13

Older versions are not supported by Dragon Professional Individual.

Export your profiles: Premium and higher (optional)

When you install Dragon Professional Individual, the installation process removes the previous version from your computer. The process also upgrades any eligible profile it finds.

Before you upgrade, consider exporting your profiles to have a backup in case you need to re-install your previous version of Dragon.

To export your profiles:

1. Start Dragon.
2. From the DragonBar, select **Profile > Manage User Profiles**.
3. Select **Advanced > Export**.
4. Navigate to the export destination folder.
5. Click **OK**.

For more information on exporting profiles and default locations, see the following Knowledge Base article:

http://nuance.custhelp.com/app/answers/detail/a_id/2313

Note: Do not export your profiles to a folder in the Dragon NaturallySpeaking directory. These directories may be deleted if Dragon is un-installed.

Optional: Export custom words (if supported in your edition)(editions Premium and higher)

Your current profile's vocabulary may be enriched by custom words or phrases you added (such as through the Vocabulary Editor or the email and document analysis feature) and words Dragon when you entered them in the process of correcting misrecognitions.

Consider exporting any custom words to create a backup copy in case you need to re-install the previous version.

To check for custom entries in your vocabulary:

1. From the DragonBar, select **Vocabulary > Open Vocabulary Editor**.
2. Select **Custom words only** from the **Display** drop-down list.

To export your custom words into a file:

1. From the DragonBar, select **Vocabulary > Export custom word and phrase list**.
2. Specify a name for the list.
3. Choose the export file format you require in the **Save As Type** list. The options are .XML or .TXT. If you need to export custom words with word properties, choose the XML format.
4. Choose a Windows folder where you will store the file.
5. Click **Save**.

Optional: Export custom commands (if supported in your edition)

You add custom commands using the MyCommands Editor. Consider exporting any custom commands to create a backup copy in case you need to re-install the previous version.

To check for custom commands:

1. From the DragonBar, select **Tools > Command Browser**.
2. Click **Script**. Dragon's existing commands and any custom commands are displayed.

To export custom commands into a file:

1. From the DragonBar, select **Tools > Command Browser**.
2. Click **Manage**.
3. Click the plus sign (+) to expand the list of commands.
4. Select the check box next to the commands you wish to export.
5. Click **Export**.

Steps to upgrade your Dragon version

1. Connect your external microphone, if you use one.
2. Close any open programs.
3. *If you're running an anti-virus program*, turn it off until the installation completes.
4. Do one of the following:
 - If you purchased Dragon as a DVD, insert that DVD into your PC. The installation begins automatically (if not, use Windows Explorer to find and double-click the setup executable on the DVD). Click **Next** to continue.

- If you purchased Dragon as a download, you received a URL and serial number. Download the setup.exe file, then double-click it.
- 5. If prompted to install the Microsoft .NET Framework runtime, accept. (Afterwards it may be necessary to restart the computer.) Click **Next** to begin the Dragon installation.
- 6. Enter the product serial number.
- 7. Select your desired region, then click Next. Optionally, you can select your installation directory by clicking **Advanced**. Then click **Install** and the actual installation will begin.
 - Click **Next**, or
 - Optionally .
 1. Select the **Advanced** check box, and then click **Next**.
 2. Click **Change**, and then specify your installation directory.
 3. Click **Next**.

Activating Dragon

The first time you start Dragon, you are prompted to activate the product. If you skip activation, you can only launch Dragon five times, after which you must activate to continue using the product.

Activating Dragon automatically with an Internet connection

These instructions assume you have an internet connection available on the computer where you are installing Dragon.

1. Launch Dragon. The Activation dialog box appears.
2. Select **Activate Product**.

Activating Dragon without an Internet connection to your PC

If you do not have an Internet connection on the computer where you are installing Dragon, but can access the Internet elsewhere:

1. On your PC, launch Dragon then select **Activate Product**. Write down the **Machine Fingerprint** value displayed in the dialog box.
2. On a device connected to Internet, go to <https://licenses.nuance.com/act/us/> and specify your Serial Number and Machine Fingerprint. Click **Generate Activation Key** and write down the activation key generated.
3. On your PC, specify the activation key in the Activation Key field, then click **Next** to activate your installation of Dragon.

Manually loading user profiles from a previous Dragon version

If you have version 12 or 12.5 user profiles in a directory not automatically detected by Dragon, or on another computer (for example, if you have an older version of Dragon on one computer and decide to install Dragon Professional Individual on another), do the following:

1. Launch Dragon and, from the DragonBar, select **Profile > Open User Profile**.
2. Click **Browse** and navigate to the profile location. (For information on default locations, see Knowledgebase article http://nuance.custhelp.com/app/answers/detail/a_id/2313.)
3. Select appropriate user profiles, and click OK. These profiles now appear in the **Open User Profile** dialog box.
4. In the **Open User Profile** dialog box, select a profile and click **Open**. Dragon now upgrades this profile automatically.

Upgrading multiple User Profiles

You can upgrade from Dragon Professional and lower editions 12.x to Dragon Professional Individual .

You use the User Profile Upgrade Wizard to upgrade one or more eligible user profiles. There are several ways to start it :

- In the **Open User Profile** dialog box, select a profile to upgrade. Dragon displays a dialog that gives you the option of upgrading now (by pressing **OK**) or upgrading later (by pressing **Cancel**). If you select **OK**, Dragon starts the **User Profile Upgrade Wizard**.
- In the Start menu, select **Programs > Dragon > Dragon Tools > Upgrade User Profiles**.

Using the User Profile Upgrade Wizard

The User Profile Upgrade Wizard guides you steps by step.

User Profile Upgrade Wizard: Select the profile(s) to upgrade

On the **Select the profile(s) to upgrade** page, you see these elements:

User profiles to upgrade

This screen displays the location and name of all the Profiles that the wizard would upgrade. Modify the list to include only the Profiles that you want to upgrade. The wizard starts by including all the Profiles in the current folder as candidates to upgrade. You add to the list by clicking **Browse to add a profile** and browsing in other locations. You remove Profiles from

the list by selecting them and clicking **Remove from list**. Once the list contains just the profiles you want to upgrade now, click **Next**.

Current Location

The location of the Profiles to upgrade.

User Profile

Displays the names of all the User Profiles to upgrade.

Total profiles to be upgraded

Displays the total number of User Profiles to upgrade.

Browse to add a profile

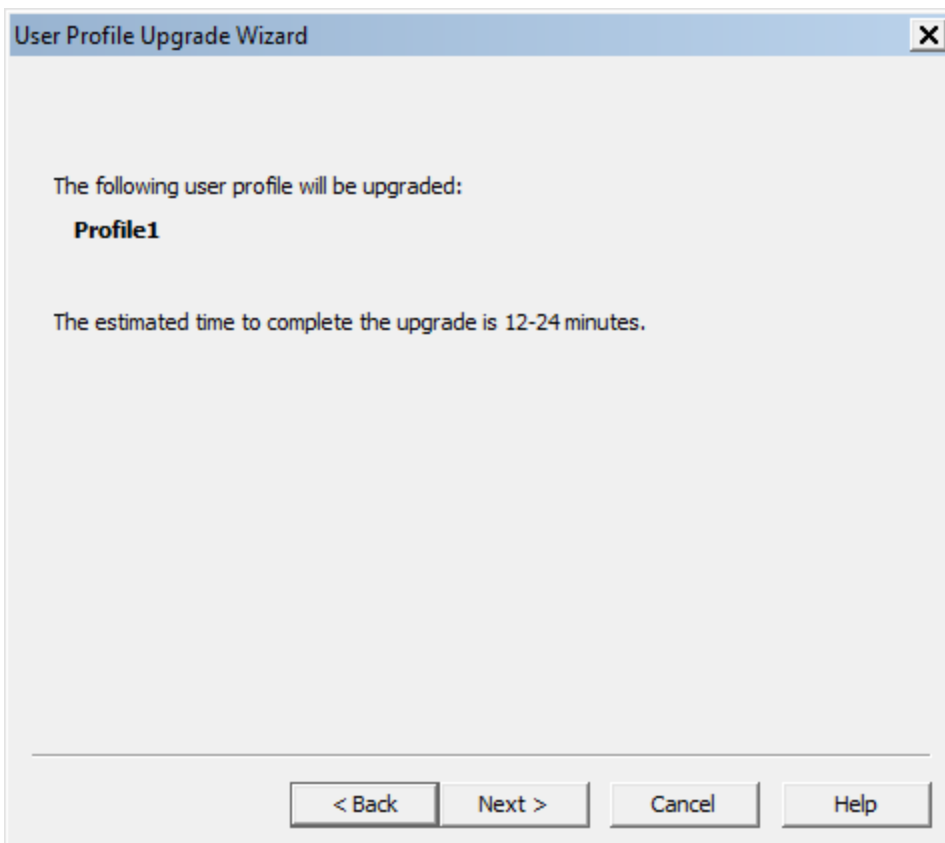
Opens a **Browse for Folder** window that you use to locate additional User Profiles for the wizard to upgrade.

Remove from list

Deletes the User Profile you select from the User Profile Upgrade Wizard.

Once you have made a selection, click **Next**.

If you choose to upgrade only one User Profile, the wizard displays the number of minutes the upgrade requires to complete.



User Profile Upgrade Wizard: Choose where to store the upgraded profile(s)

As the User Profile Upgrade Wizard updates a Profile, it can move a copy of the upgraded Profile to another location without modifying the old profile.

Location for upgraded profile(s)

Click the **Browse** button or select a new destination from the list if you want to choose a destination other than the suggested destination. You must have read and write access to the location.

Advanced

This button opens the **Advanced Options** dialog box where you can change how the wizard upgrades the Profile.

User Profile Upgrade Wizard: Advanced Options

The **Advanced Options** dialog box lets you make finer adjustments to how the wizard upgrades User Profiles.

User profiles to

The **User profiles to** list box provides information about the location, vocabulary, and the acoustic model for each profile you plan to update.

Attribute	Name	Old Value	New Value
Location	The name of the Profile.	The current location of the Profile.	The location where Dragon will place the updated Profile.
Vocabulary	The name of the current vocabulary for the Profile.	The name of the base vocabulary for the current vocabulary.	The name of the new base vocabulary for the current vocabulary.
Acoustic model	The name of the audio input device for the Profile.	The name of the current language/voice model for the Profile.	The name of the new language/voice model for the Profile.

Setting a location for an upgraded Profile

When you click on the **Location** line in the **User profiles to** list box, Dragon enables the **New Location** text box. The text box displays the location that the wizard recommends or that you chose on the **Choose where to store the upgraded profile(s)** page. You can click **Browse** and choose a new location. You must have read and write access to the location.

Setting a new base vocabulary

When you click on the **Vocabulary** line in the **User profiles to** list box, Dragon enables the **New Base Vocabulary** text box. The text box displays the current vocabulary of the User

Profile or the one that the **User Profile Upgrade Wizard** assigns to the upgraded User Profile if Dragon does not support the old vocabulary.

You can select a new base vocabulary from the drop-down list.

Setting a new acoustic model

When you click on an **Acoustic model** line in the **User profiles to** list box, Dragon displays the **New Acoustic Model** text box. The text box displays the current language (such as US English), language model, and accent of the Profile. You can choose a new acoustic model from the drop-down list.

After you modify the information for each Profile in the list box, click **OK** to return to the wizard, and click **Next** to proceed.

User Profile Upgrade Wizard: Begin profile upgrading

On the **Begin profile upgrading** page, click **Begin upgrading** to start the upgrade process. The wizard requires approximately 12 to 24 minutes to upgrade each User Profile. When the process is complete, click **Finish**.

If the User Profile Upgrade Wizard starts automatically after you upgrade and start Dragon, the **Open User Profile** window opens and displays a list of the Profiles you can now use.

Upgrading User Profiles that use third-party vocabularies

Vocabularies Created by a Third Party (other than by Nuance)

Note: Any installation can use vocabularies that are not provided by Nuance, but created by a third party specifically for a particular installation.

Using a custom vocabulary from Dragon 11.x or earlier with Dragon

You cannot use a custom vocabulary created in Dragon 11.x or earlier with Dragon Professional Individual . You must recreate the custom vocabulary in Dragon Professional Individual . If you have a custom vocabulary from a Nuance VAR, you should contact the VAR to obtain a new version of the vocabulary.

Upgrading User Profiles with third party vocabularies

When you upgrade a User Profile whose base vocabulary was created by a third party, all custom words and other changes to that vocabulary will be maintained but the vocabulary's base type will be changed. For example, Dragon 12.x User Profiles that use the **US English | Large | Nuance** vocabulary with a topic ID of **9005** are upgraded to use the **General — Medium** vocabulary; that upgraded User Profile's vocabulary also contains all customizations in the Dragon 12.x vocabulary.

To preserve new words from the custom vocabulary and words added by an end-user, perform the following steps. **Note:** The following steps do not preserve the custom language model. End-users may not achieve the same accuracy as they did with the custom vocabulary. To take advantage of the custom language model, contact the third party to obtain a new version of the vocabulary.

Step 1: Export custom words added to the custom vocabulary

If you added any additional custom words to the vocabulary created by a third party, you must first export those words. To export custom words:

1. On the **DragonBar** menu, select **Vocabulary > Export custom word and phrase list**. This action displays the **Export Custom Words** dialog box.
2. Enter the path and name of the file containing the custom words to add to the vocabulary that you want to create, or use **Save** in list to find a location for the file you want to create.

Step 2: Upgrade a User Profile that uses a custom vocabulary

To upgrade User Profiles with a third party vocabulary:

1. Run the **User Profile Upgrade Wizard**. To run the wizard, select **Dragon > Dragon Tools > Upgrade User Profiles**.
2. In the **User Profile Upgrade Wizard**, select a Dragon User Profile that uses a vocabulary from a third party.
3. Click **Next** and follow the on-screen prompts.

The **User Profile Upgrade Wizard** displays the original vocabulary deployed to create the User Profile and lets you choose a Dragon Professional Individual base vocabulary that the **User Profile Upgrade Wizard** should assign to the upgraded User Profile.

Step 3: Import custom words to the upgraded User Profile

If you exported words in Step 1, you now must import those words. To import a word list:

1. On the **DragonBar**, click **Vocabulary > Import list of words or phrases**. This displays the **Add Words** from **Word Lists** wizard.
2. Click **Next** to add the file you created in Step 1.

Step 4: Export the customized vocabulary

You can share vocabularies among different User Profiles by first exporting a vocabulary from one User Profile and then importing it to a new User Profile. Use the following procedure to export a vocabulary. To export a vocabulary:

1. Create a folder in which to save the exported vocabulary files.
2. Open the upgraded User Profile that uses the custom vocabulary.

3. On the *DragonBar*, select **Vocabulary > Manage_vocabularies** or say "**Manage_vocabularies.**"
4. In the **Manage_vocabularies** dialog box, select the vocabulary you want to export and then export it.
5. Locate and open the target folder, enter a name for the exported vocabulary in the **File Name** box, and then save it.
6. In the **Manage_vocabularies** dialog box, click or say "**Close**" to save and close it.

Note: Exporting a vocabulary creates a copy of the four files that make up the vocabulary in the new location. You can access these files via the *nsadmin* tool to create new custom base vocabularies.

Step 5: Use nsadmin to copy the vocabulary you export

Using the *nsadmin* command line, you can import the vocabulary you created in Step 2 as a base vocabulary on any *Dragon* installation.

Once you add a base vocabulary to a *Dragon* installation, you can then use the new vocabulary to create new User Profiles or add a new vocabulary to an existing User Profile.

When you run *nsadmin* to import the exported vocabulary to your *Dragon* installation, be sure to give the new vocabulary the same name and topic ID that the customized vocabulary had.

For example, if your custom vocabulary was named **US English | Large | Nuance** topic ID **9005**, you would use *nsadmin* to create a new base vocabulary with that same name and topic ID number.

Chapter 5: Working with Web applications

This section contains information about working with web applications.

Dragon includes browser extensions, also known as add-ons, for most Web-based applications, like Gmail and Outlook. These extensions give you Full Text Control in text fields, and enable spoken commands for important tasks.

About the Dragon Web Extension

Dragon uses the 'Dragon Web Extension' to work with Internet Explorer 9 and higher, and supported versions of FireFox and Google Chrome. When you open a supported browser, you are prompted to enable the extension for that browser.

[The Dragon Web Extension](#) allows you to use [Full Text Control](#) in supported browsers and most Web applications to help you perform common tasks by voice. For example, you can say "Click Link", "Click Button", or "Click Inbox" to click the elements on the page. If you do not install the Dragon Web Extension, you cannot click page elements by voice. In addition, Full Text Control is not available for dictation in the browsers and Web applications. Without the Dragon Web Extension enabled, you'll need to click Web page elements using your mouse and keyboard (or mouse commands), and dictate content using the Dictation Box.

Installing and enabling the Dragon Web Extension

To enable [The Dragon Web Extension](#), do the following.

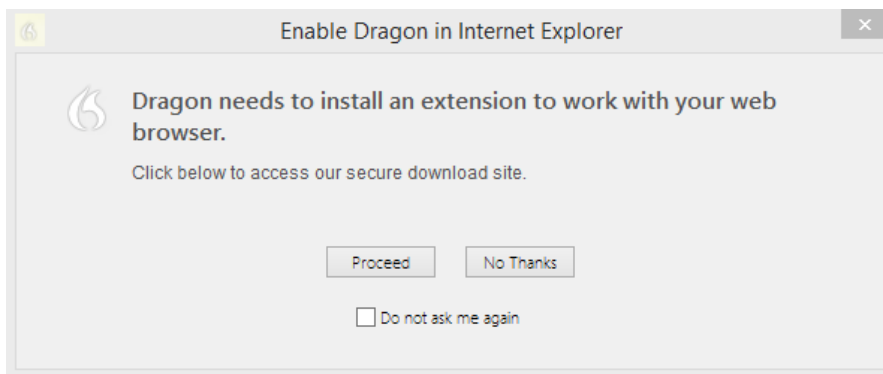
If you need to re-install, see [here](#).

Internet Explorer 9 and later

In Windows 10, the default web browser is Microsoft Edge.

Dragon Professional does not have the Web Extension for Microsoft Edge.

1. Open Internet Explorer. A prompt appears the first time you open the browser after Dragon installation.



Note: If you click **No Thanks** at the initial prompt and then later decide to install the extension, you must close and reopen both Internet Explorer and Dragon for the prompt to reappear. If you select **Do not ask me again** and then later decide to install the extension, see [Do you need to reinstall?](#) below.

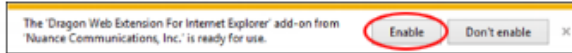
2. Click **Proceed**. Installation instructions appear.

Install Dragon Web Extension for IE

If you would like to use Dragon with Internet Explorer, you must install the Dragon Web Extension by performing the steps in Option A or B:

Option A:

If you see a message at the bottom of the page like this one:



1. Ensure that the message refers to "Dragon Web Extension".
2. Click "Enable".
3. Restart Internet Explorer.

Option B:

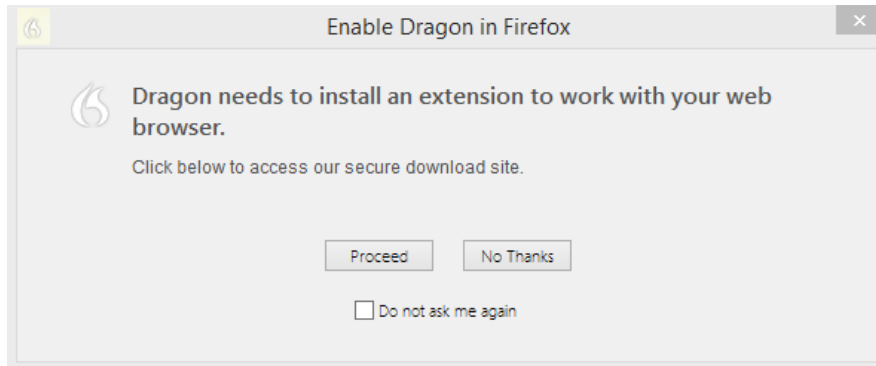
If you don't see the message in Option A, please follow these steps to install the Dragon Web Extension:

1. Click the Settings button in the top-right of Internet Explorer, or press "Alt+T".
2. Choose "Manage Add-ons".
3. In the list of Add-ons, select the item called "Dragon Web Extension for Internet Explorer".
4. Click "Enable".
5. Click "Close".
6. Restart Internet Explorer.

3. Follow the instructions provided.

Mozilla Firefox 24 or later

1. Open Firefox. When a valid user profile is loaded, a prompt appears the first time you open the browser after Dragon installation.



Note: If you click **No Thanks** at the initial prompt and then later decide to install the extension, you must close and reopen both Firefox and Dragon for the prompt to reappear. If you select Do not ask me again and then later decide to install the extension, see [Do you need to reinstall?](#) below.

2. Click **Proceed**. Installation instructions appear.

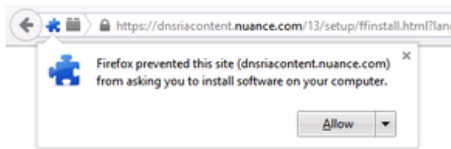
Install Dragon web extension for Firefox

Step 1

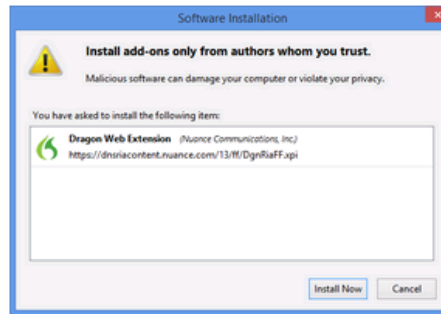
Click the button below to install the Dragon web extension for Firefox:

Install web extension

When you see this message, click **"Allow"**.



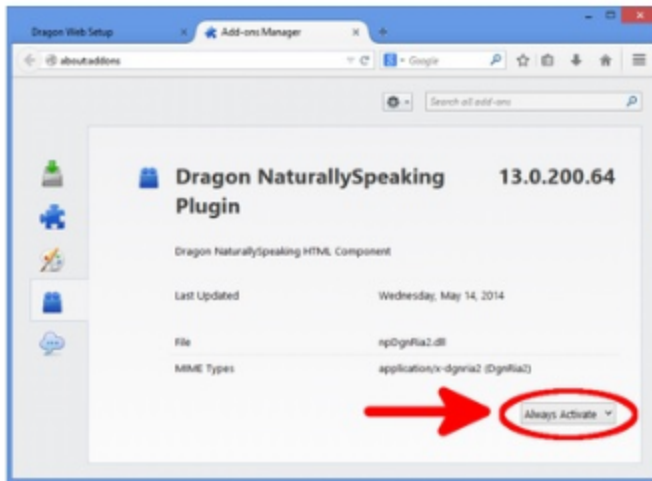
When you see this message, click **"Install Now"**.



Step 2 - Important!

You must now ensure that the Dragon Plugin is set to "Always Activate". Click the button below to view the plugin settings in a new tab. This screenshot shows the location of the setting.



Verify plugin settings



When you are done, you may close the Add-ons Manager tab.

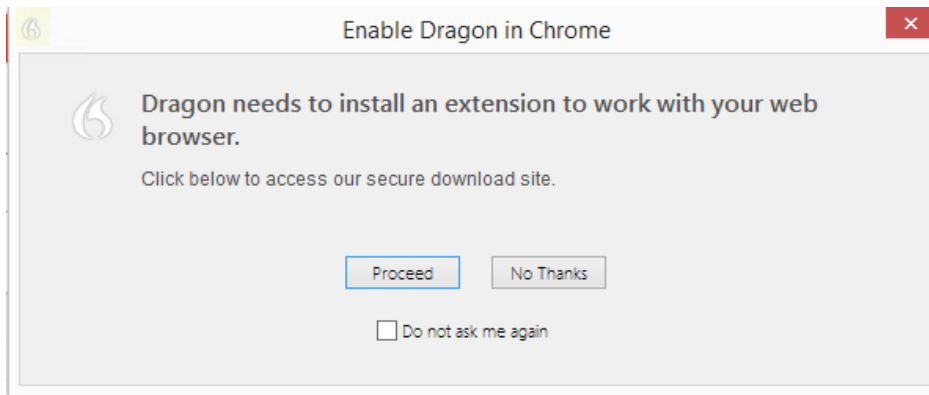
3. Click the **Install web extension** button, and then follow the instructions on the screen to install the web extension.
4. Click the **Verify plugin settings** button, and then follow the instructions on the screen to verify the plugin settings.

When you've installed the extension and plugin, ensure that the **Update Add-ons Automatically** option is selected to receive updates from Nuance. To select it:


1. Click the Firefox button , and then select **Add-ons**. The Add-ons Manager appears.
2. Click the cog icon , and then select **Update Add-ons Automatically** if it is not already selected.

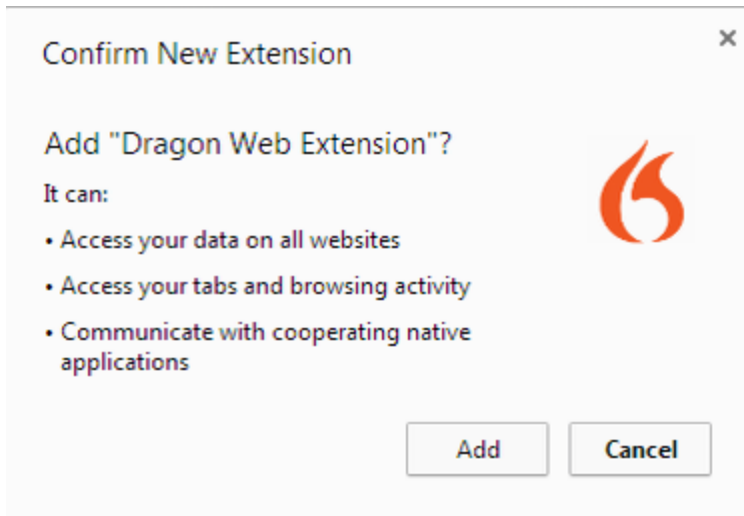
Google Chrome 16 or later

1. Open Chrome. When a valid user profile is loaded, a prompt appears the first time you open the browser after you install Dragon.

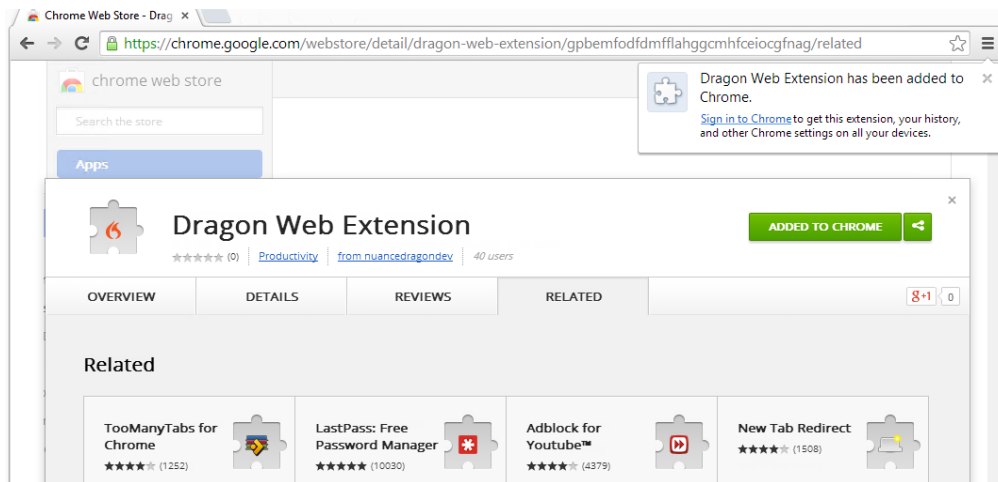


Note: If you click **No Thanks** at the initial prompt and then later decide to enable RIA support, you must close and reopen both Chrome and Dragon for the prompt to reappear. In addition, if you select **Do not ask me again** and then later decide to install the extension, see [Do you need to reinstall?](#) below.

2. Click **Proceed**. The Chrome Web Store opens.
3. Click . A confirmation appears.



4. Click **Add**. Chrome downloads and installs the extension.



Do you need to re-install?

To use all of Dragon's functionality in your browser, you must enable Dragon's web extension. If you did not enable the extension, open the browser you want to install to use the following links while in that browser:

Internet Explorer: <https://dns-riacontent.nuance.com/13/addons.html?lang=ENX&browser=ie>


Chrome: <https://dnsriacontent.nuance.com/13/addons.html?lang=ENX&browser=chrome>

Firefox: <https://dnsriacontent.nuance.com/13/addons.html?lang=ENX&browser=firefox>

How to tell if the Dragon Web Extension is Enabled

To determine if the [Dragon Web Extension](#) is enabled:

Internet Explorer


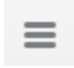
1. Open Internet Explorer.
2. Click the cog icon , and then select **Manage add-ons**. The Manage Add-ons dialog box opens.
3. Look for the Dragon Web Extension and plug-in and ensure the status is **Enabled**.

Nuance Communications, Inc.			
Dragon NaturallySpeaking HT...	Nuance Communicatio...	Enabled	32-bit and 64-bit
Dragon Web Extension For Inter...	Nuance Communicatio...	Enabled	32-bit and 64-bit

If the status is **Disabled**, do the following to enable it:


- Select the extension.
- Click **Enable** at the bottom of the Manage Add-ons dialog box.
- Restart the browser.

Mozilla Firefox

1. Open Mozilla Firefox.
2. Click the Firefox button  or the Menu icon , and then select **Add-ons**. The Add-ons Manager appears.
3. Click **Plugins** and look for the Dragon Plugin.
4. Click **Extensions** and look for the Dragon Web Extension.

In older versions of Firefox, the **Enable** option appears rather than **Always Activate**. Click the **Enable** button to enable it.

Google Chrome

1. Open Google Chrome.
2. Click the menu icon , and then select **Settings**. The Settings page opens.
3. Click **Extensions**. Chrome extensions appear.
4. Look for the Dragon Web Extension and ensure it is enabled.

If it is disabled, select the **Enabled** check box to enable it.

Resolving problems

If this is the first time you've tried using a supported web application with Dragon, try restarting your browser and reconnecting to the web application.

If you are using a Web application and browser that support the [Dragon web extension](#), but the feature is not active, see "If you have problems using Web application support" in the Dragon Help.

If you can't use the Dragon web application, such as if you are using a Web application or browser that is not supported, you cannot click page elements by voice. In addition, Full Text Control is not available for dictation in the browsers and Web applications. Without the Dragon web extension installed and enabled, you'll need to click Web page elements using your mouse and keyboard, and dictate content using the Dictation Box.

Conditions for loading the Internet Explorer compatibility module and the Dragon Web Extension

Conditions for loading the Internet Explorer compatibility module

- The “Enable HTML Support” option is enabled in Dragon.
- The web browser uses embedded mshtml.
- The web browser is Internet Explorer 8 or lower.
- The web browser does use Internet Explorer 8 compatibility mode.

Conditions for loading the Dragon Web Extension

- Internet Explorer is version 9 or higher. The Dragon Web Extension does not start if a web page opens in Internet Explorer 8 or lower compatibility mode.
- The “Enable HTML Support” option is enabled in Dragon.

Conditions for using Dragon Web Extension commands

- The "Enable Commands in HTML Windows" is enabled.

Web browser requirements for the Dragon Web Extension

[The Dragon Web Extension](#) is available in the following Web browsers and versions:

- Microsoft Internet Explorer, version 9, 10, and 11, both 32-bit and 64-bit
- Mozilla Firefox version 24 and later
- Google Chrome version 16 and later

Important: The makers of Firefox and Chrome frequently release new versions of their browser. For the latest details on Dragon functionality with a particular application, please see the Technical Support page for Dragon on the Nuance web site.

If you don't have one of these browsers in the version listed, you cannot click page elements by voice. In addition, Full Text Control is not available in the browsers and Web applications. You'll need to click page elements manually (or using MouseGrid and mouse commands) and, if you want Full Text Control, you'll need to use the Dictation Box.

Feature support

The feature is not supported in the following modes:

- Internet Explorer's Metro mode
- Chrome's Incognito mode

- Chrome's Metro mode
- Firefox's Metro mode

Chapter 6: Customizing a User Profile

This section contains information on how you can add or remove the custom words, vocabularies, and commands for a User Profile.

Adding words, commands, or Vocabularies to User Profiles

You use the [nsadmin](#) utility to make new words, customized Vocabularies, or new commands available to all User Profiles on a particular installation of *Dragon*.

The **nsadmin** utility lets you use the command line to make new words, commands, and Vocabularies available to users. The **nsadmin** utility can perform only one action at a time. However, you can create a batch file or script that can perform multiple **nsadmin** operations on a computer.

Note

You can use the **Voctool** to customize a Vocabulary by adding new words or optimizing the language model for a particular User Profile. For more information, see the **Voctool** Help. *Dragon Professional Individual* does not include the Voctool. However, you can download it from the Nuance site.

Creating the Data Distribution Directory

You create a data distribution directory to store word lists, commands, or both, that you plan to distribute to multiple users of *Dragon Professional Individual*.

When word lists and commands are in the data distribution directory, as soon as a person opens their User Profile, *Dragon* automatically imports words and commands from the data distribution directory into the User Profile. This occurs regardless of the location of the computer the user dictates on.

Note: The default installation of *Dragon* places custom words for existing *Dragon* users in:

Windows 7/Windows 8/Windows 10

C:\ProgramData\Nuance\NaturallySpeaking14\Custom

Create a data distribution directory in a location other than the default location

Repeat the following steps for each workstation that should share the distributed words or commands.

1. In *Dragon*, close all open users.
2. On the network, create a directory and give all users that dictate with *Dragon* access to the directory. Grant read access to providers that dictate. Grant write access only to administrators.
3. If *Dragon* is running, on the New DragonBar or Classic DragonBar, select **Tools > Administrative Settings**. When the **Administrative Settings** dialog box opens, proceed to Step 6.
4. If *Dragon* is not running, select **Start > Run**. When the **Run** dialog box opens, in the **Open** text box, type the following, making sure to put a space between **natspeak.exe** and the **/SetDefaultAdministrativeOptions** option:

```
"C:\ProgramFiles(x86)\Nuance\NaturallySpeaking14  
\Program\natspeak.exe"/setdefaultadministrativeoptions
```

(The quotation marks are required because **Program Files** contains a space. Your path might not require quotation marks.)

5. Click **OK**.
6. When the **Administrative Settings** dialog box opens, if the user opens automatically, click **Cancel** to close the user or go to the **DragonBar** and select **Profile > Close User Profile**.
7. Click the **Miscellaneous** tab.
8. In the **Data distribution location** text box, click **Change...** and browse to a location where you want *Dragon* to store custom words and commands.
9. Click **OK**.
10. Click **Apply** to save the changes.
11. Click **OK** to close the dialog box.

You can now use the **nsadmin** command line utility to put new words and commands into the data distribution directory. For more information, [Starting the nsadmin command line utility](#).

Nsadmin utility for new words, Vocabularies, and commands

Dragon Professional, *Dragon* Legal, and *Dragon* Professional Individual include the **nsadmin** utility. The **nsadmin** utility is a command line utility that lets you make new words, customized Vocabularies, and new commands available to all users on a particular installation of *Dragon*.

The **nsadmin** utility performs only one operation at a time. You can write a batch file or script to execute multiple **nsadmin** operations on each computer.

For step-by-step instructions on using the **nsadmin** utility, see the following topics:

- [Creating the Data Distribution Directory](#)
- [Starting the nsadmin command line utility](#)
- [Adding custom words from a command line](#)
- [Adding and removing custom Vocabularies from a command line](#)
- [Adding custom commands from a command line](#)

Starting the nsadmin command line utility

You can use the **nsadmin** utility on a command line to make new words, vocabularies, or commands available to users.

The **nsadmin** utility performs only one operation at a time. However, you can write a batch file or script to execute multiple **nsadmin** operations on a computer. You can place the network location of new words or vocabularies in a script and run the script from a client machine to copy the new functionality to the machine.

You can find the **nsadmin.exe** file in the **\Program** directory under the parent *Dragon* installation directory. The default installation directory for *Dragon* is `C:\Program Files\Nuance\NaturallySpeaking14\Program`.

The **nsadmin** utility supports both mapped drives and UNC paths. For more information, see [Using paths with nsadmin](#).

Before you can use the **nsadmin** utility, you must create a data distribution directory. For more information, see [Creating Data Distribution Directory](#).

Start the nsadmin utility

1. Select **Start > All Programs > Dragon > Dragon Tools > NSAdmin**

nsadmin starts in a DOS window and lists the ***nsadmin*** syntax.

Display help information for the nsadmin utility

1. From a command prompt, type ***nsadmin/?***

Command line syntax for the nsadmin utility

The ***nsadmin.exe*** utility uses the following syntax.

```
nsadmin <operation> <parameters> [options]
```

Commands and parameters	Description
<i>/commands</i> <src_filename>	Adds a command file to the local installation of <i>Dragon</i> .
<i>/words</i> <src_filename>	Adds a list of new words to the local installation of <i>Dragon</i> .
<i>/vocabulary</i> <src_directory> "<language or dialect> <model name> <category>" <topic ID>	Adds a vocabulary from <src_directory> or an exported .top file to the <language> using the specified <model name>, <category> and <topic ID>.
<i>/vocabulary delete</i> <topic ID>	Deletes the base vocabulary specified by <topic ID>.
Options	
<i>/language</i> <i>enx</i> <i>fra</i> <i>deu</i> <i>ita</i> <i>jpn</i> <i>esp</i> <i>nld</i>	Specifies an installed language that you want to add words, commands, or a vocabulary to. The default value is "enx".
<i>/overwrite</i> <i>yes</i> <i>no</i> <i>ask</i>	Specifies overwrite rules if a file exists with the same name as the file you are adding. The default value is <i>ask</i> .
<i>/validate</i> <i>yes</i> <i>no</i> <i>ask</i>	For adding commands from xml files. The default value is <i>ask</i> .
<i>/?</i>	Displays the command syntax.

Adding custom words from a command line

You can use ***nsadmin*** to make new words available to all users on a particular installation of *Dragon*.

You must first either create a text file or export words from an existing user's installation of *Dragon* before you can distribute the words (for example, a list of new drug names) to a different installation of *Dragon*.

After you use ***nsadmin*** to import the custom words, you must close your users, re-open the users, and save them for the changes to become available.

Create a text file that contains custom words

1. Create a text file.
2. At the top of the text file, add @Version=Plato-UTF8.
3. In the text file, add each word or phrase that you want to add to the vocabulary. Make sure each word or phrase uses correct spelling and is on a separate line. Each line can only contain a maximum of 99 characters (written and spoken combined).
4. If you have Dragon installed on another computer, you can use it to create custom words and export the words to a .txt file. See "To export a list of custom words or phrases" in the main Dragon Help file.

Notes:

- Type the written form of the word first.
- To add a multiple-word phrase, such as "Mayberry Tribune", type it on one line.
- To add a spoken form of a word, type the word, followed by two backslashes \\, and the spoken form of the word. For example, to have Dragon enter "Robert F. Kennedy" when you say "RFK", in the text file, type Robert F. Kennedy\\RFK.

Export words from a Dragon installation

If you have *Dragon* available on another machine, you can use it to create custom words and export the words to a *.txt* file. For more information, see "To export a list of custom words or phrases" in the main *Dragon* Help file.

Add custom words to a shared location

When you use *nsadmin*, you can enter paths as complete local paths, relative paths, mapped network drives, a UNC path, or the path to removable media such as a CD-ROM drive. For more information, see [Using paths with nsadmin](#).

Perform the following steps after you create a text file that contains custom words or after you export words from an installation of *Dragon*:

1. If you have not already created it, create the data distribution directory. For more information, see *Creating the Data Distribution Directory* on page 52.
2. On each computer that a user uses for dictation, map a network drive to the location of the data distribution directory. As an alternative, you may reference the network UNC address of the location of the *nsadmin* utility.
3. In a command prompt, type a command to add the custom words from the *.txt* file. The following command copies the NewWords.txt file to the

In Windows 7, Windows 8, and Windows 10


```
C:\ProgramData\Nuance\NaturallySpeaking14\Custom\Enx\NewWords.txt
```

directory:

```
<PATH>\nsadmin /words G:\NsAdmin\NewWords.txt
```

The next time you open a user, *Dragon* automatically updates the user's words to include the words from the **.txt** file.

Use the command line to overwrite a custom word file

1. Use the **/overwrite** option to overwrite an existing custom word file. If the custom word file already exists in the **\ProgramData\Nuance\NaturallySpeaking14\Custom\enx** directory, *Dragon* overwrites it without prompting you.

The following command overwrites the **NewWords.txt** custom word file:

```
<PATH>\nsadmin /words G:\NsAdmin\NewWords.txt /overwrite=yes
```

Note

If you add custom words to a **Commands Only** vocabulary, *Dragon* does not retain those words if you upgrade the user at a later date. In general, you should not add custom words to a **Commands Only** vocabulary.

Adding and removing custom Vocabularies from a command line

You can use **nsadmin** to make a customized Vocabulary available to all users on a particular installation of *Dragon*. For example, you can use **nsadmin** to copy a user's Vocabulary and set it as the base Vocabulary on any installation of *Dragon*. After you add a base Vocabulary to an installation of *Dragon*, new users you create can use that Vocabulary.

The **nsadmin** command uses the following syntax:

```
<PATH>\nsadmin /vocabulary <directory> "<language or dialect> | <model name> | <category>" <topic_ID>
```

Parameters	Description
<language or dialect>	Links a Vocabulary to a language. For example, US English or UK English for an English install. The language or dialect must exist in the version of <i>Dragon</i> on the computer.
<model_name>	Specifies the size of the Vocabulary you are importing. For example, for US English: Large or Medium or Empty.
<category>	Describes the content of the Vocabulary, for example, Astronomy or Marketing .
<topic_ID>	Sets an ID for a topic.

The following *nsadmin* command copies the model name (Large), the category (Nuance), and the topic ID (9005) to the *models.ini* file and copies the contents of the *myvoc* directory to

```
\ProgramData\Nuance\NaturallySpeaking14\Data\enx\Custom9005\.
```

```
<PATH>\nsadmin /vocabulary G:\NsAdmin\myvoc "US English | Large | Nuance" 9005
```

Notes

- The default installation of *Dragon* installs Vocabularies for existing *Dragon* users in the following directory:

```
\ProgramData\Nuance\NaturallySpeaking14\Users\<user_name>\-current
```
- Vocabulary files have a ***.voc** file extension.
- In *Dragon Professional Individual*, you can use Voctool to customize a Vocabulary. For more information on Voctool, see [Customizing Vocabularies with the Dragon Vocabulary Tool \(Voctool\)](#). *Dragon Professional Individual* does not include the VocTool. However, you can download it from the Nuance site.
- If you create a User Profile on a dual core machine that uses a custom Vocabulary, make sure that the User Profile uses the BestMatch V speech model (BestMatch V has the greatest recognition accuracy on dual-core systems with more than 2 GB of RAM). To check this, select the Advance button on the Creating a User Profile screen of the New User Profile wizard and make sure that BestMatch V is selected.

Prepare to use the command line to add a Vocabulary

1. If you have not already created it, create the data distribution directory. For more information, see [Creating the Data Distribution Directory](#).
2. On each computer that a user uses for dictation, in a command prompt, start the *nsadmin* utility and use it to add the Vocabulary to the data distribution directory. Make sure to reference the network UNC address of the computer in the command. Use the following syntax for the command:

```
<PATH>\nsadmin /vocabulary <directory> "<language or dialect> | <model name> | <category>" <topic_ID>
```

The next time you open a user, *Dragon* automatically updates the user's Vocabularies. For more information on using the *nsadmin* utility, see [Starting the nsadmin command line utility](#).

Use the command line to overwrite a Vocabulary

1. Use the **/overwrite** option to overwrite an existing Vocabulary file. If the Vocabulary file already exists in **\\Pro-gramData\Nuance\NaturallySpeaking14\Data\enx\Custom9005**, *Dragon* overwrites it without prompting you.

The following command overwrites the **myvoc** topic:

```
<PATH>\nsadmin /vocabulary G:\NsAdmin\myvoc "US English | Large | Nuance" 9005 /overwrite=yes
```

Use the command line to add an exported Vocabulary

You can use the **nsadmin** utility to distribute a Vocabulary that you create using a separate installation of *Dragon*. A *Dragon* Vocabulary that you export saves as a group of files.

One of the exported files has a **.top** file extension, the other files have **.to*** file extensions, where * is an integer.

1. In a command prompt, provide the path to the file with the **.top** file extension as an argument to the **nsadmin** utility. Do NOT include the **.top** file extension on the command line.

The following command adds the **myvoc** exported topic (**myvoc.top**) as a new base Vocabulary:

```
<PATH>\nsadmin /vocabulary D:\MyDocuments\myvoc "US English | Large | Nuance" 9005
```

Use the command line to remove a base Vocabulary

1. On each client computer, in a command prompt, enter a command to delete the Vocabulary and the corresponding entry in **models.ini**. You cannot use Vocabularies that are based on a base Vocabulary you delete. Use the following syntax:

```
<PATH>\nsadmin /vocabulary delete <topic_ID>
```

The following **nsadmin** command deletes a Vocabulary with a topic id of 9005:

```
<PATH>\nsadmin /vocabulary delete 9005
```

Adding custom commands from a command line

Custom commands are voice commands that you can create and modify to enter text, insert graphics, or activate menus and keystrokes in any application. You can use the

MyCommands Editor to create custom commands or the **Command Browser** to modify custom commands.

You can use the **nsadmin** tool to copy a set of custom commands to the data distribution directory and make the set of custom commands available to all users of a particular installation of *Dragon*.

Before you use the **nsadmin** utility, you must have already created a data distribution directory, as explained in [Creating the Data Distribution Directory](#).

Notes

- The default installation of *Dragon* places custom commands for existing *Dragon* users here:
In Windows 7, Windows 8, and Windows 10
`C:\ProgramData\Nuance\NaturallySpeaking14\custom\<language>\xxx.dat`
- After you import the custom commands to *Dragon*, for the changes to become available to those users, you must close your users, then re-open and save the users.
- You can enter a path as a complete local path, a relative path, a mapped network drive, a UNC path, or the path to removable media, such as a DVD or CD drive. For more information, see [Using paths with nsadmin](#).

Use the command line to add custom commands

Use the Command Browser Manage mode to export custom commands to a .dat file.

1. In *Dragon*, create custom commands.
2. Use the **Command Browser** to export the custom commands to a **.dat** file, for example, **NewCommands.dat**.
3. If you have not already created it, create the data distribution directory. For more information, see [Creating the Data Distribution Directory](#).
4. On each computer that a user uses for dictation, in a command prompt, type a command line using the following syntax, to add the custom commands from the **.dat** file. Reference the network address of the data distribution directory in the command:

```
<PATH>\nsadmin /commands G:\NsAdmin\NewCommands.dat
```

The next time you open a user, *Dragon* updates the commands in the User Profile for the user.

Use the command line to add custom commands to a language other than English

Use the **/language** option to associate commands with a non-English language.

The following command associates the **NewCommands.dat** file with the language of French.

```
<PATH>\nsadmin /commands G:\NsAdmin\NewCommands.dat /language=fra
```

Use the command line to overwrite a custom command file

Use the **/overwrite** option to overwrite an existing command file.

The following command overwrites the **NewCommands.dat** file if it already exists in the **G:\NsAdmin** directory. **Dragon** overwrites the file without prompting you.

```
<PATH>\nsadmin /commands G:\NsAdmin\NewCommands.dat /overwrite=yes
```

Using paths with nsadmin

When you use the **nsadmin** utility, you can use a path that is a complete local path, a relative path, a mapped network drive, a UNC path, or the path to removable media, such as a DVD or CD drive. If a path name includes spaces, you must enclose the path name in quotation marks.

When you are running **nsadmin** from a directory other than the one **nsadmin** resides in, you must provide the full path to the **nsadmin.exe** program on the command line.

The following command copies the **NewCommands.dat** file to the **<drive>:\ProgramData\Nuance\NaturallySpeaking14\custom\enx\NewCommands.dat** directory.

```
<PATH>\nsadmin /commands \\HostComputer\NsAdmin\NewCommands.dat
```

Chapter 7: Maintaining a Dragon installation

This section contains information on the tools and procedures you can use to maintain Dragon installations, including User Profiles and vocabularies. You can also view information on resources that can help you trouble shoot issues that may occur in Dragon.

Maintaining Installations

There are several actions you can take to maintain your Dragon Professional Individual installation:

- Run the **Acoustic and Language Model Optimizer**.
- Export User Profiles from one computer and import them to another as outlined in [Exporting and Importing User Profiles](#).
- Work with the **Dragon.log** file to determine the cause of error messages (see [Handling Dragon Error Messages](#)).
- Work with a Usability log file—create a usability log (**DgnUsability.log**) by pressing the **Advanced** button on the **Data** tab of the **Options** dialog box. For more information, see [Working with the Usability Log](#).
- Work with the *Dragon* knowledge base as outlined under [Accessing Dragon Knowledge Database](#).
- Manage who has administrative privileges (see [Managing Who Has Administrative Privileges](#)).

Checking the optimization status of a User Profile

Dragon Professional Individual checks the optimization status of a User Profile when:

- Dragon creates a User Profile and loads the profile
- Dragon loads a User Profile one week after its creation and the "Learn from" wizards have not run for the profile
- Dragon loads a User Profile and the "Learn from" wizards have not run for six months
- The Language Model Optimizer has not run in over two months
- The Acoustic Optimizer has never run and at least 1 hour worth of DRA data is available

See the Dragon Help for details.

Keeping custom words up-to-date

Using Dragon's support for custom words, especially contact names, can make communicating with Dragon faster and more precise. To facilitate this, when Dragon loads a User Profile, Dragon examines how long it has been since the last time custom words were updated. If required, Dragon displays the **Personalize Your Vocabulary** dialog box to step the end-user through the custom word update process.

The **Personalize Your Vocabulary** dialog box contains information about the last time the "Learn from specific document" wizard and the "Learn from sent e-mails" wizard ran for the profile. The dialog also displays the total time required to run the wizards.

Users can run both the "Learn from specific document" wizard and the "Learn from sent e-mails" wizard from the dialog.

Dragon displays the **Personalize Your Vocabulary** dialog box:

- Two days after creating a User Profile if the "Learn from" wizards have not run for the profile
- Once a week after not running a "Learn from" wizard for 1 month or if the end-user pressed cancel the first time Dragon displays the **Personalize Your Vocabulary** dialog box:

Checking for User Profile maintenance when saving a User Profile

When an end-user saves a User Profile or closes Dragon, Dragon checks to make sure that scheduled language model User Profile maintenance has been performed recently. If not, then an additional check box will appear on the **Save** dialog. The maintenance should only take an extra minute or two complete and is always beneficial – especially when new custom words have been added.

Running Acoustic and Language Model Optimizer on User Profiles

An open local end-user cannot run the optimizer tools on User Profiles. Only an administrator can run the *Acoustic and Language Model Optimizer*

Running the Acoustic and Language Model Optimizer on a multi-core computer

To increase the accuracy of the User Profile, select **Audio > Launch Accuracy Tuning** from the DragonBar.

To run the acoustic and language model optimizers on User Profiles:

1. On the DragonBar, select **Profile > Open User Profile**.
2. In the **Open User Profile** dialog box, select a User Profile to run the optimization on and click **Open**.
3. On the DragonBar, select **Help > Improve my Accuracy**. The Accuracy Center opens.
4. Click **Launch Accuracy Tuning now**. The **Acoustic and Language Model Optimizer** dialog box opens.
5. If the end-user has not dictated and corrected recognized text since the last time the optimizer was run, you receive this message: ***There is no new data in the acoustic archive. Acoustic Optimizer does not need to be rerun.*** Click **OK** and the **Acoustic and Language Model Optimizer** opens with the **Perform Acoustic Optimization** option grayed out.
6. Check the types of optimization you want to perform, **Perform Acoustic Optimization** (to optimize the acoustic files of the User Profile), **Perform Language Model Optimization** (to optimize the language model of the User Profile), or both.
7. Click **Go** to start the process. The process may take some time to complete. When the process completes, you receive a message notifying you that it has completed.
8. Click **Done**.
9. When asked if you would like to save your User Profiles click **Yes** to return to the **Accuracy Center**. Click **Exit** in the **Accuracy Center** dialog box.

Exporting and Importing User Profiles

You can export User Profiles on one computer and import them for use on another.

When you export a User Profile to a new location, any custom words added to a User Profile do not accompany the User Profiles unless you first run the ***Learn from specific documents*** wizard in the ***Accuracy Center***.

Exporting User Profiles

To export User Profiles from *Dragon*:

1. On the ***DragonBar***, select ***Profile > Manage User Profiles***.
2. The ***Manage User Profiles*** dialog box opens.
3. Select the User Profile in the list that you want to export.
4. Click the ***Advanced*** button and select ***Export*** from the menu that appears.
5. When the ***Browse For Folder*** dialog box opens, navigate to the folder where you want to store the exported User Profile (or create a new folder by clicking the ***Make New Folder*** button) and click ***OK***.
6. When a dialog box opens displaying a message indicating the export was successful, click ***OK***.
7. Repeat steps 3 through 6 for each set of User Profiles you want to export.
8. Click ***Close*** to close the ***Manage User Profiles*** dialog box.
9. In the operating system, navigate to the directory where you exported the User Profiles. In that directory you find a separate folder for each exported User Profile, labeled with the user name.

Importing User Profiles

To import User Profiles into *Dragon* that you previously exported on a different computer:

1. On the ***DragonBar***, select ***Profile > Manage User Profiles***. The ***Manage User Profiles*** dialog box opens.
2. Click the ***Advanced*** button and select ***Import*** from the menu.
3. When the ***Browse For Folder*** dialog box opens, navigate to the folder to retrieve a set of exported User Profiles from.
4. Select the folder in that directory that has the name of the User Profile to import and click ***OK***.
5. If the User Profile already exists a ***User already exists dialog box*** opens and asks you to choose how to proceed: ***Overwrite the existing user*** or ***Import the user with an***

alternate name. If you choose to import the User Profile and assign it another name, enter the name in the text box provided and click **OK**.

6. Repeat steps 2 through 5 for each end-user whose User Profiles you want to import.
7. Click **Close** to close the **Manage User Profiles** dialog box.

The Dragon log file

Dragon log location

In Dragon Professional Individual, the Dragon.log file is located in the following directory:

```
%programdata%\Nuance\NaturallySpeaking14\logs\WindowsUserName.
```

- WindowsUserName is the name of the user that is sending messages to the log service.

Dragon log filename format

The Dragon log filename format

is “Dragon_Date_Time.log”:

- Date: the date when the file was created in YYYYMMDD format.
- Time: HHMMSS in 24-hour format.

The log file is named “Dragon.log” when the log services is updating the file. When the log file is closed, the log service renames the file using the “Dragon_Date_Time.log” format.

For example: “Dragon_20130820_105023.log”: This Dragon log was created on the 20th of August, 2013, 10:50:23.

The full path to this log file is:

```
%programdata%\Nuance\NaturallySpeaking14\logs\Admin\Dragon_20130820_105023.log”
```

Dragon log management

The log service manages the Dragon log files; creating new log files and deleting old ones.

The service creates a new log file when the current file exceeds the size limit of 10 MB.

The service stores the last 10 log files.

Manually creating a new Dragon log file

An administrator can start a new Dragon log file when Dragon starts.

In the nssystem.ini file, set the following parameter:

[Settings]

New Log On Startup=1

1. Open text editing software such as Notepad. On Windows 7, Windows 8,x, and Windows 10, make sure you have administrator rights when you open the text editor (use the “Run as administrator” option to open the text editor).
2. In the text editor, navigate to the folder that contains the *nssystem.ini* file.
The default location of the *nssystem.ini* file on Windows 7, Windows 8,x, and Windows 10, is:
`C:\ProgramData\Nuance\NaturallySpeaking14`
3. In the text editor, open the *nssystem.ini* file.
4. In the “[Settings]” section, add the following line of text: **New Log On Startup=1**.
5. Save and close the *nssystem.ini* file.
6. To activate the setting, re-open the User Profile.

Handling Dragon Error Messages

When Dragon displays an error message:

1. Read the message carefully. It may give you enough information to determine what to do.
2. If you dictated text into your document, click **Close** to close the error message box and then save your document.
3. Do not save your User Profiles.
4. Copy the error message log file (**Dragon.log**) to a safe place. To locate this file, click **Start > Programs > Dragon > Show Dragon Log**. In Dragon Professional Individual, the *Dragon.log* file is located in the following directory:
`%programdata%\Nuance\NaturallySpeaking14\logs\WindowsUserName`

WindowsUserName is the name of the user that is sending messages to the log service.

5. Exit **Dragon** and start it again. In some cases it may be necessary to restart your computer.
6. Insert your *Dragon* DVD into your DVD reader, run the installation program again, and choose the **Repair** option on the first screen of the *Dragon* setup program. After setup finishes, reinstall any *Dragon* patches that were previously installed.
7. If the error message does not provide enough information to determine what to do, search our Web site for information on the error message. You may find a solution that can save you time and trouble:

<http://www.nuance.com/product-support/default.asp?lang=us&prod=dn>

Working with the Usability Log

In Dragon Professional Individual, you can set up *Dragon* to create a usability log that logs all menu commands, toolbar buttons, and voice commands that you use during a dictation session.

To set up a usability log:

1. With a User Profile open, on the **DragonBar**, select **Tools > Options**.
2. Click the **Data** tab.
3. Click the **Advanced** button.
4. When the **Advanced** dialog box opens, check the **Create usability log** check box and click **OK** to return to the **Data** tab.
5. Click **Apply** and then click **OK** to close the **Data** tab of the **Options** dialog box.

The log is located here:

C:\Users\\AppData\Roaming\Nuance\NaturallySpeaking14.

See [Dragon file structure](#) for information on default locations on Windows 10 and other operating systems.

Accessing the Dragon Knowledge Database

Solutions to known problems with *Dragon* are provided at the Nuance Knowledge Base, located at <http://nuance.custhelp.com/>.

To locate and use the *Dragon* Knowledge Database:

Navigate to <http://nuance.custhelp.com>.

1. In the **Search by Product** drop-down list, select *Dragon NaturallySpeaking*.
2. In the field that appears below the **Search by Product** field, select the Dragon version number.
3. In the next field that appears, select the Dragon edition.
4. In the **Refine by Category** drop-down list, select a category to further refine the search criteria.
5. In the **Search by Keyword** field, type the words that would be expected to be found in the pages that contain the answer. Do not use words such as "how", "why", "the", "in", or "on".
6. Beside the Search by Keyword field, click the magnifying glass to start the search.

Managing end-user administrative privileges

Before You Give Windows Administrator Privileges

Before you decide to give a *Dragon* user Windows Administrator privileges on a laptop computer, note that you are giving that person access to the **Administrative Settings** dialog box on that computer.

Determining Logged In User Has Admin Privileges

If the logged in end-user has Windows Administrator privileges, the following line appears in the **Dragon.log** file after he or she logs in:

```
2014-07-28|23:26:02.485| LEGACY| 1392| 5180|I|LOG (MainWin): Windows  
user has administrative access to NatSpeak
```

Chapter 8: Working with Custom commands

This section contains information on how you can use tools in Dragon to control access to your custom commands.

Managing and Securing Custom Commands

Make your custom commands more secure in two ways:

To prevent users from editing command files, convert any XML files of commands to DAT format. For details see [Using the Convert XML to DAT tool](#).

To prevent any *Dragon* end-users from editing the commands, lock the commands and then import them. For details see [Using the MyCommands Protection Utility](#).

Using the Convert XML to DAT tool

You can use a text editor to edit commands that are in XML format. To allow only *Dragon* end-user to access those command files, you can convert them from XML format to DAT format. *Dragon* uses **.dat** files to store commands.

You can use the **XML to DAT** tool (*mycmdsxml2dat.exe*) to extract end-user-defined *Dragon* commands from an XML file. The tool writes the commands to a **.dat** file. Use the *nsadmin* utility to make the new **.dat** files available to those other end-users.

Starting the Convert XML to DAT tool

- In Dragon Professional, or Dragon Professional Individual and higher:

Start > All Programs > Dragon > Dragon Tools > Convert XML to DAT

The **Convert XML to DAT** tool starts in an MS-DOS window, listing the tool's syntax.

Convert XML to DAT syntax

Convert XML to DAT (*mycmdsxml2dat.exe*) uses the following syntax:

```
mycmdsxml2dat.exe <dat-file-path> <xml-file-path> [options]
```

Parameters	Type	Description
<dat-file-path>	Required	The full path to the local copy of the current end-user's .DAT file
<xml-file-path>	Required	The full path to the .XML file
-v	Optional	Validates the specified .xml file over the Internet with a Nuance DTD (Document Type Definition) file. Disabled by default.

Use the XML to DAT tool to convert data in an XML file

1. Create an XML file that contains the commands to use with *Dragon*.
2. On a command line, use **mycmdsXML2DAT.exe** to convert the XML file to DAT format.
3. Use the **nsadmin** utility to copy the **.dat** file to the data distribution directory.

The next time you open a User Profile, *Dragon* incorporates the new commands from the **.dat** file into the User Profile.

For more information, see:

- [Adding custom commands \(nsadmin\)](#)

Using the MyCommands Protection Utility

In Dragon Professional Individual and higher, you can export a set of custom **Text-and-Graphics**, **Step-by-Step**, **Macro Recorder**, and/or **Advanced Scripting** commands into a **.dat** file, so that after an end-user imports them, that end-user can dictate the commands but cannot view their source code, edit their source code, or re-export the commands. As a result, the integrity of the commands remains intact.

To protect the commands in a **.dat** file:

1. Make a backup copy of the unprotected **.dat** file and store it in a secure location. You later use that file to edit the commands, because once you protect the **.dat** file that you are distributing, you cannot make the file available for editing again.

2. Select **Start > Run** and enter **cmd** into the **Run** dialog box.

3. Change directories to:

C:\Program Files (x86)\Nuance\NaturallySpeaking14\Program

See [Dragon file structure](#) for information about default file locations on supported Windows operating systems.

4. Enter the following on the command line:

```
protectcmds.exe <dat-file-path> <vendor-name> [<vendor-contact-info>]
```

5. Once you press return, after an end-user imports these commands, if that end-user attempts to view, copy, or edit any of them, the following message indicates that the commands cannot be edited:

The command was protected by <vendor-name>.

Please contact <vendor-contact-info> **for more information.**

In the **Command Browser**, the same message appears as the **Preview Content** in **Script** mode.

Once you have protected the file, you can put it into the **Data Distribution** directory for distribution to multiple User Profiles. For more information about distributing saved commands, refer to [Creating the Data Distribution Directory](#), then refer to one of the following topics about distributing commands to multiple User Profiles by either:

- Using the **nsadmin** command line tool ([nsadmin: Adding custom commands](#))

Chapter 9: Commands that perform actions based on the application state

This section contains information how to create and use structured commands that perform actions based on the state of the application.

About Structured Commands

Dragon includes an extension to text and graphics commands that lets you set the values of variables in text blocks based on voice input.

You can create simple text and graphics commands with variables in the My Commands Editor dialog box without having to do extensive programming in Microsoft® VBA.

Application states

Structured commands let you control the action of a command based on the existence of a state in the application. For example, when you assign a state to each field in a form, the same command can perform different actions depending on which field is activated.

You can use Advanced Scripting methods to control the states within structured commands or to set the initial state from a non-structured command. You can also create structured commands that prompt the user to select values from a predefined list.

When the user speaks a command, the user is presented with a list of pre-defined values for the command. Once the user selects a value, the value is inserted into the correct location in the macro.

Samples

Dragon includes several sample text and graphics commands with variables and sample structured commands. You can import the samples into Dragon to use them as templates for your own commands. The sample commands are fully commented.

For more information, see:

[Structured Commands Samples](#)

[Importing Sample Commands](#)

Methods

Structured Commands Samples

Dragon includes several sample text and graphics commands with variables and sample structured commands. You can import the samples into Dragon to use them as templates for your own commands. The sample commands are fully commented.

Sample location

The sample commands are installed in:

- **Windows 7, Windows 8.x, and Windows 10:**

```
\\Pro-gramData\Nuance\NaturallySpeaking14\Data\<language>\samplecommands
```

A shortcut to this directory is available on the Windows Start menu. To open this directory, click **Start > All Programs > Dragon Professional Individual > MyCommands Samples**. In Windows 8.x and Windows 10, My Commands Samples can be opened from the Apps screen.

Importing Sample Commands

You can import the samples into Dragon to use them as templates for your own commands. For information, see [Importing Sample Commands](#)

Samples

The following samples are included with Dragon:

GroceryListSample_DragonPad

GroceryListSample_DragonPad.xml contains Advanced Scripting commands that simulate an on-line grocery order form in DragonPad. It demonstrates how to set and change command states, activating and deactivating various state structured commands, and how to use the command prompt. The voice command "Prepare Grocery List" causes the first section of a grocery list to display in DragonPad and sets a command state. Each section of the grocery list is designed to have a separate state. The voice command

"What's Available" will prompt the user with a set of grocery list commands that are active in the given section.

GroceryListSample_WordPad

GroceryListSample_WordPad.xml contains Advanced Scripting commands similar to those of GroceryListSample_DragonPad.xml. It demonstrates how to set and change command states and to use the command prompt in WordPad and uses a different coding style. The same voice command "Prepare Grocery List" will start the grocery list in WordPad, activate the initial grocery list state, and prompt the user with a set of grocery list commands that are active in the given state. To read more about this sample and its commands, refer to the code comments in the XML file.

SampleBoilerPlate_ColonCancer

SampleBoilerPlate_ColonCancer.xml contains Advanced Scripting commands that demonstrate how to use structured commands and the command prompt for boilerplate text. This sample is modeled after a colon cancer checklist and is designed to work in Microsoft Word. The voice command "Colon Cancer Checklist" causes the boilerplate text to display and takes the user, field by field, through the checklist.

SampleBoilerPlate_EndoBiopsy

SampleBoilerPlate_EndoBiopsy.xml contains a single Advanced Scripting macro that demonstrates how to set up boilerplate text and use the command prompt to guide users in filling the boilerplate text without using states. This sample is modeled after an endoscopic biopsy report and is designed to work in Microsoft Word 2003 or 2007. The voice command "Prepare Endoscopic Biopsy Gross Template" causes the boilerplate text to display and takes the user, field by field, through the report.

SampleTGV_Restaurant

SampleTGV_Restaurant.xml contains Text and Graphics and Advanced Scripting commands that are used in DragonPad to simulate an ordering system for a Chinese and Japanese restaurant. This sample demonstrates how to set states for structured commands as well as how the same commands can be used to produce different results in different states. The voice command "Chinese Menu" or "Japanese Menu" starts the ordering system and activates the structured commands created for the given state. The voice command "Exit Ordering System" ends the ordering session.

SetStateSample

SetStateSample.xml contains simple Text and Graphics commands that demonstrate how to use variables and text formats and Advanced Scripting commands to set and unset a command state. This sample is designed to work in DragonPad with the initial command "Sample Set State." When the command executes, a command state is set

for DragonPad and a simple exchange of greetings is simulated between the user and the system. The user speaks the greeting, e.g. "Good Morning", and the system responds in bold red text. When the user says "Good-bye", the exchange is terminated and the command state is unset.

SampleInjuryReport

SampleInjuryReport.xml together with SampleInjuryReport.dot demonstrates how structured commands and Microsoft Word templates can be used together to create a voice-enabled form filling environment. The template is a mock injury report with several text and checkbox fields can be filled using the commands included in the XML file. You start a form filling session with the voice command "Edit Report" spoken in a new document based on the sample template. Both the template and the commands are designed to work in Microsoft Word 2010 or 2013.

Importing Structured Commands

You can import existing structured commands, such as the [Structured Commands Samples](#), into Dragon to use as templates for your own commands. Use the following procedure to import the sample structured commands that are supplied with Dragon:

To import the sample structured commands:

1. On the New DragonBar or Classic DragonBar Tools menu, click Command Browser to open the Command Browser window.
2. Click the Manage button on the Command Browser toolbar.
3. In the Manage area, click the Import button, and in the Import Commands window choose MyCommands XML files from the Files of type list.
4. Use the Import Commands window to browse to the directory. You'll find it in the following location:
Windows 7, Windows 8.x, and Windows 10:
`Pro-gramData\Nuance\NaturallySpeaking14\Data\<language>\samplecommands`
5. Select one of the sample .XML files (for example, `sampletgv_restaurant.xml`) and click Open.
6. Click Yes on the Import Commands validation dialog box and then click Import on the Import Commands window to import the commands contained in the file.

Note: The syntax of XML command files is defined by a document type definition (DTD) file that resides on the Nuance Web site. When you import an XML command file, the application

gives you the option of validating the syntax of the XML file against the DTD. The validation step is useful if you receive a XML command file from another person and want to check it for syntax errors prior to importing it.

7. Click OK on the success message and return to the Manage area of the Command Browser.

To examine the sample code

1. Open the Command Browser and click the Manage button.
2. and select the appropriate item (for example, "<restaurant_type> Menu")
3. Click the To Script button and then click the Edit button.

The opens with the command you selected entered into it. You can examine and modify the command with the My Commands Editor.

Chapter 10: Configuring administrative features in Dragon

This section contains information how to use the Administrative options, in the Administrative Settings dialog box, to set and control many administrative features in Dragon.

Summaries of Administrative Settings Dialog Boxes

The tabs in the *Administrative Settings* dialog box are:

- Miscellaneous
- Scheduled Tasks

For more on each tab, see the corresponding topic below:

- [Administrative Settings: Miscellaneous tab](#)
- [Administrative Settings: Scheduled Tasks tab](#)

Administrative Settings: Miscellaneous tab

The *Miscellaneous* tab of the *Administrative settings* dialog box contains the following options:

Backup location for User Profiles

Shows the location where Dragon will save backup User Profiles.

- Click the **Change** button to open a dialog box where you can specify a new location.
- Click the **Use Default** button if you want Dragon to use each Windows user's My Documents folder.

You can change the **Backup Location for User Profiles** to any directory where Windows has both read and write permissions, including portable devices such as CD or DVD burners. If you change the location, backups for all User Profiles will be located in the same directory.

Data Distribution location

Shows the location where the local installation of Dragon stores customized words and commands.

- Click the **Change** button to open a dialog box where you can specify the location for this directory.
- Click the **Use Default** button to set the location to this default path:
`C:\ProgramData\Nuance\NaturallySpeaking14\custom`

You can change the **Data Distribution location** to any directory where Windows has both read and write permissions, including portable devices such as CD or DVD burners.

For a default installation, custom words and commands are located in:

- Windows 7, Windows 8, Windows 10, Windows Server 2008, and Windows Server 2012:
`C:\ProgramData\Nuance\NaturallySpeaking14\custom\<language>`

Check for product updates at startup

Automatically looks on the Nuance Web every time you start Dragon. Any change to this option does not take effect until you restart Dragon.

Disable use of Macro Recorder Commands

Select this box to prevent end-users from using macro recorder commands. End-users can still run the commands.

Disable use of Step-by-Step Commands

Select this box to prevent User Profiles from using step-by-step commands. End-users can still run the commands.

Disable use of Advanced Scripting Commands

Select this box to prevent User Profiles from using advanced scripting commands. End-users can still run the commands.

Disable automatic acoustic model selection in the Acoustic Optimizer

Running the **Acoustic Optimizer** updates your User Profiles with accumulated acoustic data from any corrections and additional training end-users may have done. Running Acoustic Optimization increases your overall accuracy. In the process of increasing your accuracy, Acoustic Optimization may select a different acoustic model for your User Profile. For example, if you chose a General accent during User Profile setup, Dragon may change it

if your speech more closely matches another accent. For more information, see "About speech and acoustic models" in the Dragon Help.

Select this option to disable the Acoustic Optimizer from selecting a different acoustic model when run.

If you are using Dragon Professional Individual, see [Using multiple acoustic models with a User Profile](#) for information on acoustic model selection and User Profiles that use two acoustic models.

Restore Defaults

Returns the current tab to the state it had when you first installed *Dragon*. The button does not affect to other tabs.

Notes

- When the User Profile is closed, you cannot use Dragon to dictate or to perform actions by voice.
- You must have administrator privileges to change the Backup Location. Dragon will not let restricted end-users create backup files in directories reserved for the operating system (for example, the \Windows directory). When specifying a backup location, make sure that directory can be accessed by all end-users
- In some versions of Windows, you must be logged on as the administrator before you can access this dialog box.
- In some situations, an end-user that does not have administrator privileges may have access to options on this dialog that they would not normally have.
- Dragon Professional Individual allows you to use the Universal Naming Convention (UNC) to locate a User Profile. The UNC is a way to identify a shared file on a computer or network without having to know the storage device it is on. The format is: \\servername\sharename\path\filename.

Administrative Settings: Scheduled Tasks tab

The **Scheduled Tasks** tab of the **Administrative settings** dialog box allows you to schedule Accuracy Tuning and Data Collection for all User Profiles created with this installation of Dragon Professional Individual. Data collection is available in non-US English versions of Dragon Professional Individual.

Accuracy Tuning

Schedule Accuracy Tuning to help Dragon to learn from you and make your dictation more accurate. Accuracy Tuning runs the Acoustic and Language Model Optimizer to update your User Profile with

- frequently dictated word sequences
- acoustic data from any corrections you make, including with the keyboard
- trained words
- commands used
- any additional training you perform

Enable scheduled Accuracy Tuning

Check to turn on periodic scheduled acoustic model tuning for all end-users.

Clear this checkbox if you want to disable Accuracy Tuning for the User Profile. The setting is enabled by default.

Configure

Click **Configure** to open the **Select Frequency, Data Collection** tab and set the Data Collection schedule. You are immediately asked to log in with your Windows Administrator password to make a schedule change. After you log in, you can set one schedule for **Acoustic** model tuning and another for **Language Model** tuning by clicking the appropriate tab and choosing **Daily**, **Weekly**, or **Monthly** and the start date and time.

Data Collection

Data collection is available in non-US English versions of Dragon Professional Individual.

Enable Scheduled Data Collection—Check to allow Nuance to collect up to 500 MB of acoustic data and text from your dictation sessions. Once the data is collected, you have the option of sending it to Nuance to help improve the accuracy of future versions of Dragon Professional Individual. No personal information is ever sent to Nuance and participation is voluntary.

- Click **Configure** to set the schedule for data collection. You are immediately asked to log in with your Windows Administrator password to make a schedule change. After you log in, you can choose **Daily**, **Weekly**, or **Monthly** and the start date and time.

Restore Defaults

Click this button to restore the default values for Data Collection and Periodic Optimization.

Notes:

- When the User Profile is closed, you cannot use Dragon to dictate or to perform actions by voice.
- Scheduled Accuracy Tuning and Data Collection cannot run if Dragon is open, including if Dragon is running in QuickStart mode, if Dragon is left open with no User

Profile loaded, or if Dragon is left open by another end-user in a separate Windows session on the same computer.

- Since Dragon uses a local system account to schedule periodic tasks, User Profiles placed on network shares will not be available for scheduled Accuracy Tuning and Data Collection unless special arrangements are made with the network administrator

For more information, see the following topics in the Dragon Help:

- "About the Acoustic and Language Model Optimizer" for information about Accuracy Tuning.
- "About Data Collection" for more information about Data Collection.
- The "Options dialog box Data tab" for more information about scheduling Accuracy Tuning and Data Collection for the current Dragon User Profile.

Glossary

.DRA files (definition)

Dragon Recorded Audio (DRA) files. By default, Dragon automatically saves audio and text transcripts of your dictation in the DRA files.

Accuracy Center (definition)

Offers a central location for tools and information you can use to ensure recognition. The link in the description of each feature opens a topic describing that feature more completely. Say “display Accuracy Center” or click “Improve my Accuracy” on the DragonBar Help menu.

Accuracy Tuning (definition)

A process Dragon can use to adapt to your usage. Once you have been dictating for a period of time, Dragon uses Accuracy Tuning to automatically refine your User Profile, analyzing your dictation, corrections, and any other acoustic training you have done. Accuracy Tuning uses two of Dragon's accuracy tools, the Acoustic Optimizer and the Language Model Optimizer.

Acoustic Optimizer (definition)

Looks for any corrections you have made or additional training you may have performed. Optimization enhances recognition accuracy and helps predict words most likely spoken in a given context by a speaker (the language model).

Advanced Scripting (definition)

Supports using programming languages such as Microsoft® VBA to create commands that can perform virtually any function on the computer with voice commands.

Command Browser (definition)

A window showing voice commands that Dragon recognizes, including commands that are provided with the software as well as any commands that you or your system administrator might have added (custom commands). The Command Browser is the most comprehensive place to see the commands that are available in each application.

Correction menu (definition)

Shows Dragon's best guess for alternatives to words you dictated and selected. Choose the correct word from the Correction menu by saying "Choose" and the number next to your choice.

Command Mode (definition)

A restricted recognition mode that causes Dragon to interpret everything you say as a command and nothing is interpreted as dictated text. Say "Start Command Mode" or "Command Mode On".

Dictation Box (definition)

Provides full support for dictating and editing text in non-standard windows. The Dictation Box supports voice commands like Delete, Correct, and Insert, and custom commands as well. When you are finished, the content is transferred to the non-standard window where your cursor was positioned when you opened the Dictation Box. The Dictation Box can be anchored or unanchored.

Dictation Mode (definition)

A restricted recognition mode that causes Dragon to interpret everything you say as dictation and nothing is interpreted as a command. Dictation Mode can be helpful if you want to dictate as quickly as possible, or dictate without looking at the words Dragon transcribes. Say "Start Dictation Mode" or "Dictation Mode On".

Dictation Source (definition)

An audio input device or multiple devices associated with a User Profile. An end-user can select a headset microphone at one computer, an array microphone at another, and a portable recorder for transcription at several computers.

Dragon Web Extension (definition)

Enables page element commands such as "Click Link" and "Click Button" and [Full Text Control](#) in supported browsers and Web-based applications. With the Dragon Web

Extension installed and enabled, you can dictate content and use commands just as you would in a desktop program. Without the extension, you'll need to click Web page elements using your mouse and keyboard, and dictate content using the Dictation Box.



DragonPad (definition)

Dragon's built-in word processor, optimized for dictation and includes basic text formatting features as well as the ability to save and print documents.

Full Text Control (definition)

Refers to the level of dictation support available in Web and desktop programs and windows when Dragon fully supports creating, editing, and formatting content. When a program or part of a program has Full Text Control, you can move the cursor reliably – for example, to the beginning or end of a line or paragraph. You can also select, format, and revise text as needed using Direct Editing commands, the Correction menu, or the Spelling Window.

For supported Web applications, Full Text Control is activated using the Dragon web extension in supported browsers.

When the cursor is in a text field for which Dragon has Full Text Control, the Text Control Indicator on the Classic DragonBar () or the New DragonBar () is green when all of Dragon's selection and dictation capabilities are supported.

Language Model optimization (definition)

Updates the language model of the current Vocabulary. Language Model Optimization uses text Dragon extracts from the .DRA files that are created when you correct words. Based on the speech data collected, Language Model Optimization applies modifications to the language model to reflect your word usage.

Language Model Optimizer (definition)

Performs Language Model Optimization from the Accuracy Center. Any Dragon end-user with administrator privileges can schedule Dragon to perform optimization periodically.

Normal Mode (definition)

Dragon's default mode of dictation. In Normal Mode, Dragon distinguishes dictation from words, numbers, and commands by analyzing what you say between pauses. Say "Start Normal Mode" or "Normal Mode On".

Numbers mode (definition)

A restricted recognition mode that causes Dragon to recognize only numbers, commands, and punctuation. If you are dictating only numbers (including currencies), working in this mode increases recognition accuracy. Say "Start Numbers Mode" or "Numbers Mode On".

QuickStart (definition)

Allows Dragon to load in the background when you start your computer or log in to your operating system, depending on your version of Windows. When Dragon is launched in QuickStart mode, Dragon is available for use more quickly than when you start in normal mode. The microphone icon appears in the system tray.

Recognition Modes (definition)

By default, Dragon functions in Normal Mode, distinguishing dictation from words, numbers, and commands, and analyzing what it hears between pauses. Dragon also offers restricted recognition modes for dictating only commands (Command Mode), numbers (Numbers Mode), characters (Spell Mode), or words (Dictation Mode).

Spell Mode (definition)

A restricted recognition mode that causes Dragon to recognize only letters, numbers, commands, and punctuation. Spell mode is useful for dictating unpronounceable alphanumeric strings, such as part numbers and license plate numbers, and other terms you anticipate Dragon may not recognize, such as Web addresses, words in a foreign language, or unusual product names. Say "Start Spell Mode" or "Spell Mode On". You can still use commands while in Spell Mode.

User Profile (definition)

A set of files created the first time you use Dragon, which is subsequently used to reflect your characteristics and adapt to your usage. Each person who uses Dragon must have a User Profile, which the software stores in a set of files containing, among other things, acoustic and lexical data. These data contain information about how you sound, and the words you use, and how often you use them. When you add a word to your Dragon Vocabulary, make corrections, read a training text, or change a setting in the Options dialog, Dragon can save these refinements in your User Profile. If your edition of Dragon supports custom commands, these are also saved in the User Profile.

Web application support (definition)

Provides the [Dragon web extension](#) in [supported Web browsers](#) to enable commands and [Full Text Control](#) for selected browser-based applications. With the Dragon web extension installed and enabled, you can dictate content and use commands just as you would in a desktop program.