

# Client installation guide

For:

Nuance®  
**Dragon®**  
**Home**

Version 15

# Copyright

---

2018 Nuance Communications, Inc.

This material may not include some last-minute technical changes and/or revisions to the software. Changes are periodically made to the information provided here. Future versions of this material will incorporate these changes.

No part of this manual or software may be reproduced in any form or by any means, including, without limitation, electronic or mechanical, such as photocopying or recording, or by any information storage and retrieval systems, without the express written consent of Nuance Communications, Inc. Specifications are subject to change without notice.

Copyright © 2018 Nuance Communications, Inc. All rights reserved.

Nuance, ScanSoft, the Nuance logo, the Dragon logo, Dragon, DragonBar, NaturallySpeaking, NaturallyMobile, RealSpeak, Nothing But Speech (NBS), Natural Language Technology, Select-and-Say, MouseGrid, and Vocabulary Editor are registered trademarks or trademarks of Nuance Communications, Inc. in the United States or other countries. All other names and trademarks referenced herein are trademarks of Nuance Communications or their respective owners. Designations used by third-party manufacturers and sellers to distinguish their products may be claimed as trademarks by those third-parties.

## Disclaimer

Nuance makes no warranty, express or implied, with respect to the quality, reliability, currency, accuracy, or freedom from error of this document or the product or products referred to herein and specifically disclaims any implied warranties, including, without limitation, any implied warranty of merchantability, fitness for any particular purpose, or non-infringement.

Nuance disclaims all liability for any direct, indirect, incidental, consequential, special, or exemplary damages resulting from the use of the information in this document. Mention of any product not manufactured by Nuance does not constitute an endorsement by Nuance of that product.

## Notice

Nuance Communications, Inc. is strongly committed to creating high quality voice and data management products that, when used in conjunction with your own company's security policies and practices, deliver an efficient and secure means of managing confidential information.

Nuance believes that data security is best maintained by limiting access to various types of information to authorized users only. Although no software product can completely guarantee against security failure, Dragon software contains configurable password features that, when used properly, provide a high degree of protection.

We strongly urge current owners of Nuance products that include optional system password features to verify that these features are enabled! You can call our support line if you need assistance in setting up passwords correctly or in verifying your existing security settings.

Published by Nuance Communications, Inc., Burlington, Massachusetts, USA  
Visit us on the Web at [www.nuance.com](http://www.nuance.com). Links to our international web sites are shown there.  
8/14/2018

# Contents

---

<b>Dragon Home Installation Guide</b> .....	<b>1</b>
Copyright .....	2
Contents .....	3
About Dragon Home .....	4
Interactive Tutorial .....	4
Preparing for an installation .....	4
Dragon system requirements .....	5
Install Dragon and choose the default settings .....	6
Installing Dragon on a single computer .....	6
Upgrading Dragon .....	8
Dragon file structure .....	9
Windows 7, Windows 8.1, and Windows 10 .....	9
Accessing program files .....	9
Documentation .....	10
Support .....	10

## About Dragon Home

---

Dragon Home allows users to dictate documents, send emails, and search the web more efficiently with fast and accurate dictation. Dragon Home also includes voice commands that allow users to perform everyday tasks without using the mouse or keyboard. For example, use voice commands to:

- Correct and format text.
- Launch applications.
- Navigate in applications.
- Access buttons and menus in supported programs, including Microsoft Word and more

Dragon Home can be installed on each client computer manually .

### Interactive Tutorial

Dragon Home includes an interactive tutorial with progressive simulations that help you learn Dragon skills.

When you are connected to the internet, Dragon connects to a web-based interactive tutorial. If you don't have an internet connection, the tutorial runs locally.

## Preparing for an installation

---

Before installing or upgrading Dragon Home:

- Install any pending Windows updates, and then restart the computer.
- Turn off or disable any antivirus software until installation is complete. Installation can sometimes trigger a false virus report.
- Close all open applications.
- Ensure your system meets the requirements before attempting to install Dragon Home.

For more information, see [“Dragon system requirements” on page 5](#).

For upgrade instructions, see the Dragon client Help:

[Dragon Home release notes](#)

## Dragon system requirements

---

During the installation process, the software checks that your system meets the following requirements. If they are not met, Dragon Home is not installed.

<b>RAM</b>	<p>Minimum:</p> <ul style="list-style-type: none"> <li>• 4 GB for all operating systems.</li> </ul>
<b>CPU</b>	<p>Minimum: 2.2 GHz Intel® dual core or equivalent AMD processor. Faster processors yield faster performance.</p>
<b>Free hard disk space</b>	<ul style="list-style-type: none"> <li>• 4GB if DVD installation, or</li> <li>• 12GB if downloading installation files</li> </ul>
<b>Supported operating systems</b>	<ul style="list-style-type: none"> <li>• Windows 7, 8.1, and 10, 32-bit and 64-bit</li> </ul>
<b>Other</b>	<ul style="list-style-type: none"> <li>• Internet Explorer 11 or the current version of Chrome for online Help, and for installation if installing from the Web</li> <li>• Microsoft .NET Framework version 4.5.2 or later</li> </ul> <p>Generally, the .NET Framework is pre-installed on Windows 7, 8.1, and 10 computers. If you do not have it installed, you are prompted to install it during Dragon's installation.</p> <p>Nuance does not provide the .NET Framework with your installation; you must download the installation file from <a href="http://microsoft.com">microsoft.com</a>.</p> <ul style="list-style-type: none"> <li>• A DVD-ROM drive if installing from disk</li> <li>• An audio input device capable of 16-bit recording for dictation</li> </ul>

## Install Dragon and choose the default settings

Install Dragon Home on the client computer using the downloaded installer file or installation DVD.

**Notes:**

- You must have Windows Administrator rights to install or uninstall Dragon Home.

### Installing Dragon on a single computer

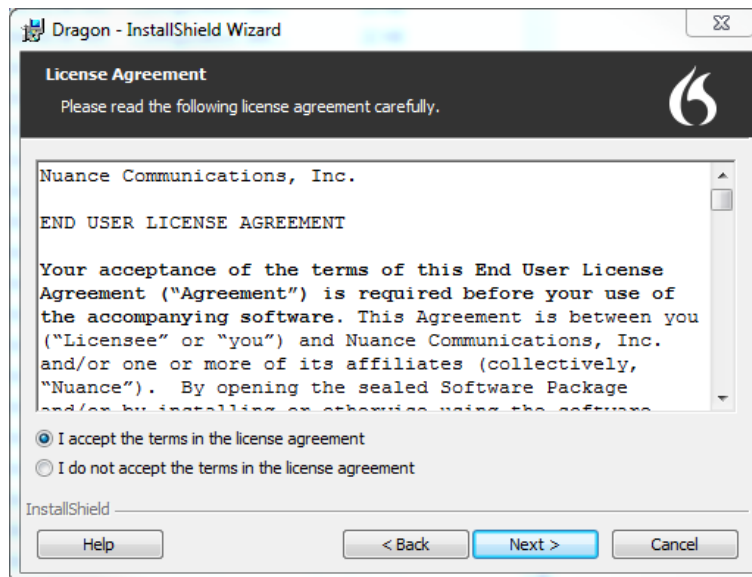
1. Run the Dragon installation file you downloaded.

Or

Insert the product DVD. If the installation does not start automatically, run setup.exe from the DVD.

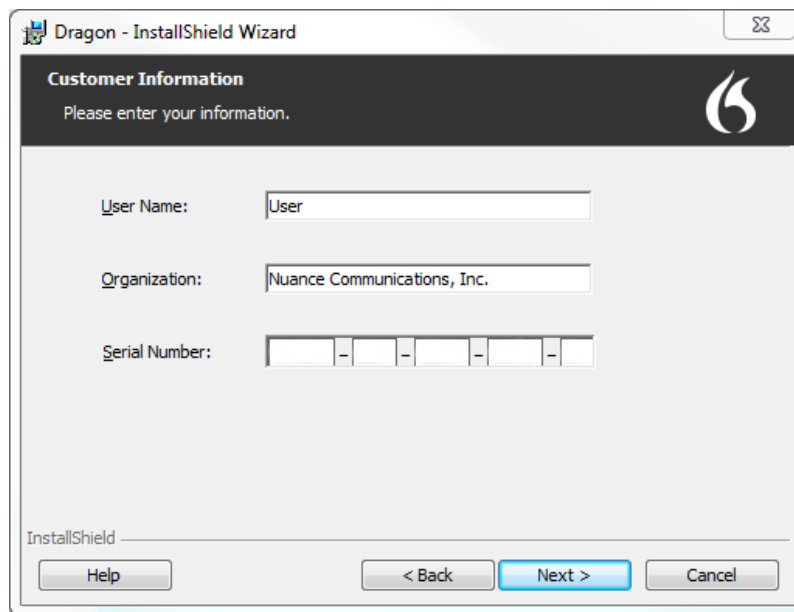
The Dragon InstallShield Wizard opens.

2. Click **Next** to proceed to the **License Agreement** screen.



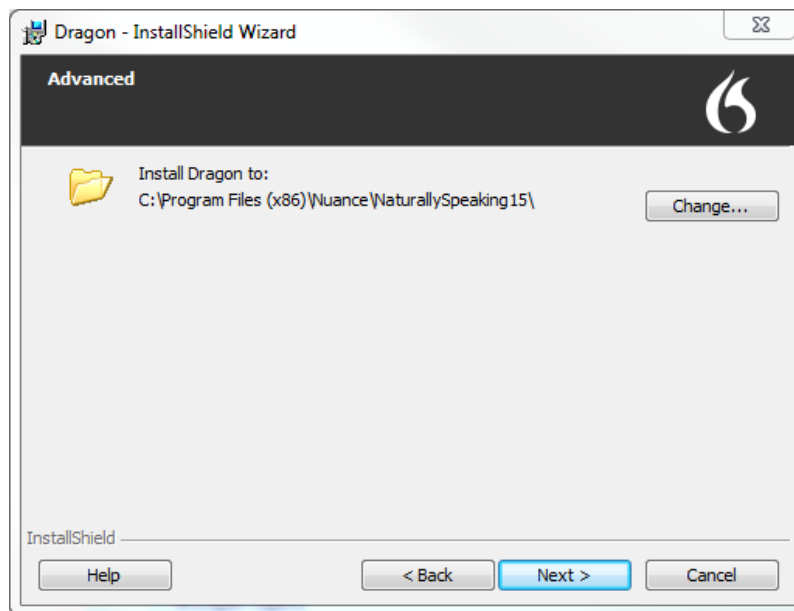
3. Read the text of the agreement, select **I accept...**, and then click **Next**.

The **Customer Information** screen appears.



4. Enter your User Name, Organization, and the Serial Number supplied with your DVD or download of Dragon, and then click **Next**.
5. **Optional:** To change the installation directory, select **Advanced**, then click **Next**.

The **Advanced** screen appears.



1. Click **Change...**  
A Browse For Folder dialog box opens.
2. Navigate to the folder where you want to install Dragon (or create a new folder by clicking the **Make New Folder** button) and then click **OK**.

**Note:** By default, Dragon is installed in:

C:\Program Files(x86)\Nuance\NaturallySpeaking15

6. Click **Next** to proceed to the **Ready to Install the Program** screen.
7. Click **Install**.

The installation process begins. It may take several minutes to install Dragon Home. At times, the progress bar may not appear to be advancing, but the installation is still proceeding internally.

8. When installation of Dragon is complete, the installer displays the completion screen. Click **Finish**.

The Product Registration window appears.

9. Choose whether to register Dragon online now or to have Dragon remind you to register in seven days, and then click **OK**. Registering the product provides faster access to Nuance Technical Support.

You can open Dragon using the desktop shortcut, or find Dragon in the Start menu:

- **Windows 7:** Select **Start > All Programs > Dragon**.
- **Windows 8.1:** From the **Start** screen, select the down arrow to show all applications, and then scroll to the right to view the Dragon applications.
- **Windows 10:** Select **Start > All apps > Dragon**.

### Activating Dragon

The first time you start Dragon, you are prompted to activate your copy of Dragon. If you do not activate, Dragon stops working after you start it five times.

## Upgrading Dragon

You can upgrade Dragon Home 13 to Dragon Home 15 without uninstalling Dragon.

The upgrade process:

- Does not upgrade version 13 profiles to version 15.
- Stores your version 13 profile here:  
C:\ProgramData\Nuance\NaturallySpeaking13\Users\- Creates your version 15 profile here:  
C:\ProgramData\Nuance\NaturallySpeaking15\Users\



## Dragon file structure

During installation, Dragon creates the following default folders for application and data file storage.

**Note:** Upgrading Dragon from an earlier version automatically relocates some directories and files.

### Windows 7, Windows 8.1, and Windows 10

#### Dragon setup log (dgnsetup.log)

C:\ProgramData\Nuance\NaturallySpeaking15\logs

#### Dragon log

C:\ProgramData\Nuance\NaturallySpeaking15\logs\*<Windows\_User\_Name>*

#### User profiles

C:\ProgramData\Nuance\NaturallySpeaking15\Users

#### Upgrade log

C:\Users\*<Windows\_User\_Name>*\AppData\Roaming\Nuance\NaturallySpeaking15

#### Vocabularies and acoustic models

C:\ProgramData\Nuance\NaturallySpeaking15\Data

#### Program files

For 32-bit systems	For 64-bit systems
C:\Program Files\Nuance\NaturallySpeaking15\Program	C:\Program Files (x86)\Nuance\NaturallySpeaking15\Program

#### Help

For 32-bit systems	For 64-bit systems
C:\Program Files\Nuance\NaturallySpeaking15\Help	C:\Program Files (x86)\Nuance\NaturallySpeaking15\Help

#### Interactive Tutorial



For 32-bit systems	For 64-bit systems
C:\Program Files\Nuance\NaturallySpeaking15\itutorial	C:\Program Files (x86)\Nuance\NaturallySpeaking15\itutorial

### Accessing program files

You can access the Dragon client and many associated utilities through the **Start** menu. Their location varies by operating system:

- Windows 7: Select **Start > All Programs > Dragon**.
- Windows 8.1: From the **Start** screen, click the down arrow to show all applications. Scroll to find **Dragon**.
- Windows 10: Select **Start > All apps > Dragon**.

## Documentation

Document	Description	Location
Dragon Help	Full online Help system that includes commands and instructions for dictating, correcting, and more with Dragon.	Dragon Help. When Dragon is open, click the Help icon (  ) on the DragonBar, and then select <b>Help Topics</b> .
<i>Dragon Release Notes</i>	New features, system requirements, client upgrade instructions, and known issues.	Dragon Help. Do the following: <ol style="list-style-type: none"> <li>1. When Dragon is open, click the Help icon (  ) on the DragonBar, and then select <b>Help Topics</b>.</li> <li>2. Click <b>Get started</b>.</li> <li>3. Click <b>Dragon release notes</b>.</li> </ol>

## Support

The Dragon Support web site provides many resources to assist you with your Dragon installation. For more information on Support offerings, see the Dragon Support web site at:

<https://www.nuance.com/support.html>