

# PowerScribe 360 Reporting Clinical Guidance

Real-time assistance for quality and actionability.

## Challenge

In today's demanding healthcare environment, how can providers remain competitive, meet growing regulatory requirements, comply with quality performance measures, support population health management, and transition to new value-based models of care?

## Solution

Nuance® PowerScribe® 360 Reporting Clinical Guidance provides quick and easy voice-enabled access to evidence-based clinical guidelines at the point of documentation. This eliminates the need to stop and search for information to complete the report, increasing productivity. Clinical Guidance enables consistent follow-up recommendations, reducing risks and improving patient outcomes.

## Industry-standard recommendations

The solution provides access to ACR's Recommendations for Incidental Findings and guidelines from other societies, including:

- The Fleischner Society
- The American Joint Committee on Cancer (AJCC)
- The American Association for the Surgery of Trauma (AAST)
- Society of Radiologists in Ultrasound (SRU)

These powerful features save time and support the efficient generation of consistent, defensible reports.

## Consistent yet flexible

Every exam and every radiologist is different. Clinical Guidance alerts radiologists to the appropriate consistent information while allowing flexibility to edit—or ignore—the suggested guidance.

## Efficient report generation

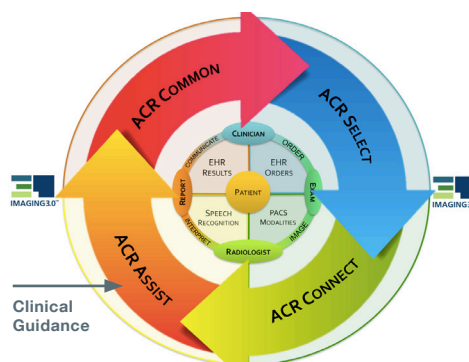
Options to automatically insert guidance text in the Findings or Impression sections of the report further increase productivity and add to confidence that reports encompass evidence-based medicine.

## Customization

Nuance offers a consultative service to customize the linguistic style and textual content for released guidelines to a facility's preference.

## Key benefits

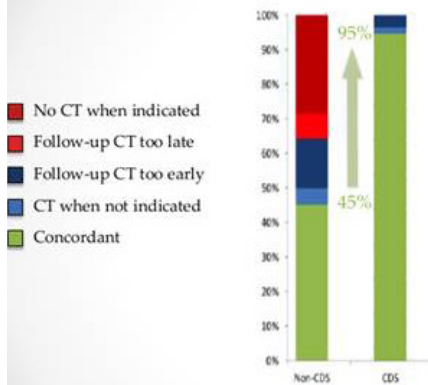
- Features real-time interactive assistance at the point of documentation to drive consistency, reduce diagnosis time and minimize callbacks.
- Provides access to current evidence-based guidelines and recommendations via the PowerShare Network.
- Enhances productivity with clickable images on specific guidelines.
- Uses established guidelines to improve credibility and increase referring physician satisfaction.
- Features an interactive user interface allowing users to characterize relevant findings and receive instant evidence-based guidance.



Coupled with existing content developed by the ACR on incidental findings (ACR Assist), Nuance quality assurance tools deliver real-time clinical insights to radiologists at the point of interpretation to save time, while providing more consistent and clinically effective guidance following an exam.

## Improving Report IQ

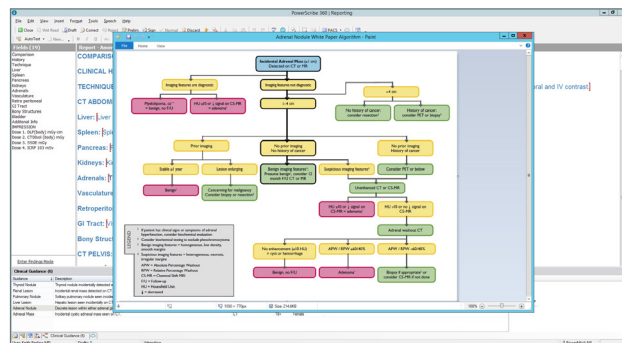
Abdominal CT (Incidental Pulmonary Nodule) Reports



- Facilitates more consistent and concordant recommendations
- Reduces diagnosis time
- Enhances callback appropriateness
- Fosters increased referrer satisfaction

M T Lu, MD, Boston, MA; D A Rosman, MD; C C Wu, MD; T K Alkasab, MD, PhD; J O Shepard, MD; G W Boland, MD; et al. Impact of a Point-of-Care Electronic Clinical Decision Support (CDS) Tool on Adherence to Departmental Guidelines for Follow-up of Incidental Pulmonary Nodules on Abdominal CT. RSNA 2013

Easy access to white paper flow charts. No need to look beyond PowerScribe 360 for this helpful documentation.



Clickable image maps are now associated with many guidelines. This enhances the user's experience by allowing the radiologist to select options from the image.

GRADE	Type of Injury	Description of Injury
I	Hematoma	Subcapsular, non-expanding without parenchymal laceration
	Contusion	Microscopic, or gross-hematoma, anatomic studies normal
II	Hematoma	Non-expanding perirenal hematoma confined to renal retroperitoneum
	Laceration	Parenchymal depth of renal cortex <1 cm without collecting system rupture or urinary extravasation
III	Laceration	Parenchymal depth of renal cortex >1 cm without collecting system rupture or urinary extravasation
	Laceration	Parenchymal laceration extending through the renal cortex, medulla and collecting system
IV	Vascular	Main renal artery or vein injury with contained hemorrhage
	Laceration	Completely shattered kidney
V	Laceration	Avulsion of renal hilum which devascularizes kidney
	Vascular	Completely shattered kidney

## Real world examples of improved clinical outcomes using Clinical Guidance:

- Adrenal Mass CT-MRI guideline helps reduce unnecessary CT scans and radiation exposure.
- Adnexal CT-MRI guideline helps reduce unnecessary pelvic ultrasounds.
- Adnexal Cyst-US helps diagnose causes of pelvic pain and eliminate redundant pelvic ultrasound exams.
- Lung Cancer Staging assists in providing precise staging information, and helps assure proper treatments.
- Pancreatic, Renal, Splenic, and Hepatic trauma guidelines more efficiently grade injuries and demonstrate adherence to standards for Level 1 Trauma Center accreditation.
- Abdominal and Pelvic Aneurysm-CT guidelines assist in earlier recognition and can markedly reduce mortality.
- Pulmonary Nodule Fleischner 2017-CT guidelines incorporate newer concepts and assist in recommending appropriate follow-up for solid, ground glass, part-solid and nodules.
- Pregnancy of unknown viability and location guidelines facilitate decision making in both initial and follow-up situations.

To learn more about how Nuance Healthcare can help you improve financial performance, raise the quality of care, and increase clinician satisfaction, please contact us at 1-877-805-5902 or visit [www.nuance.com/healthcare](http://www.nuance.com/healthcare).

## About Nuance Communications, Inc.

Nuance Communications, Inc. is a leading provider of voice and language solutions for businesses and consumers around the world. Its technologies, applications and services make the user experience more compelling by transforming the way people interact with devices and systems. Every day, millions of users and thousands of businesses experience Nuance's proven applications. For more information, visit [www.nuance.com/healthcare](http://www.nuance.com/healthcare) or call 1-877-805-5902. Connect with us through the healthcare blog, [What's next](#), [Twitter](#), [LinkedIn](#) and [Facebook](#).