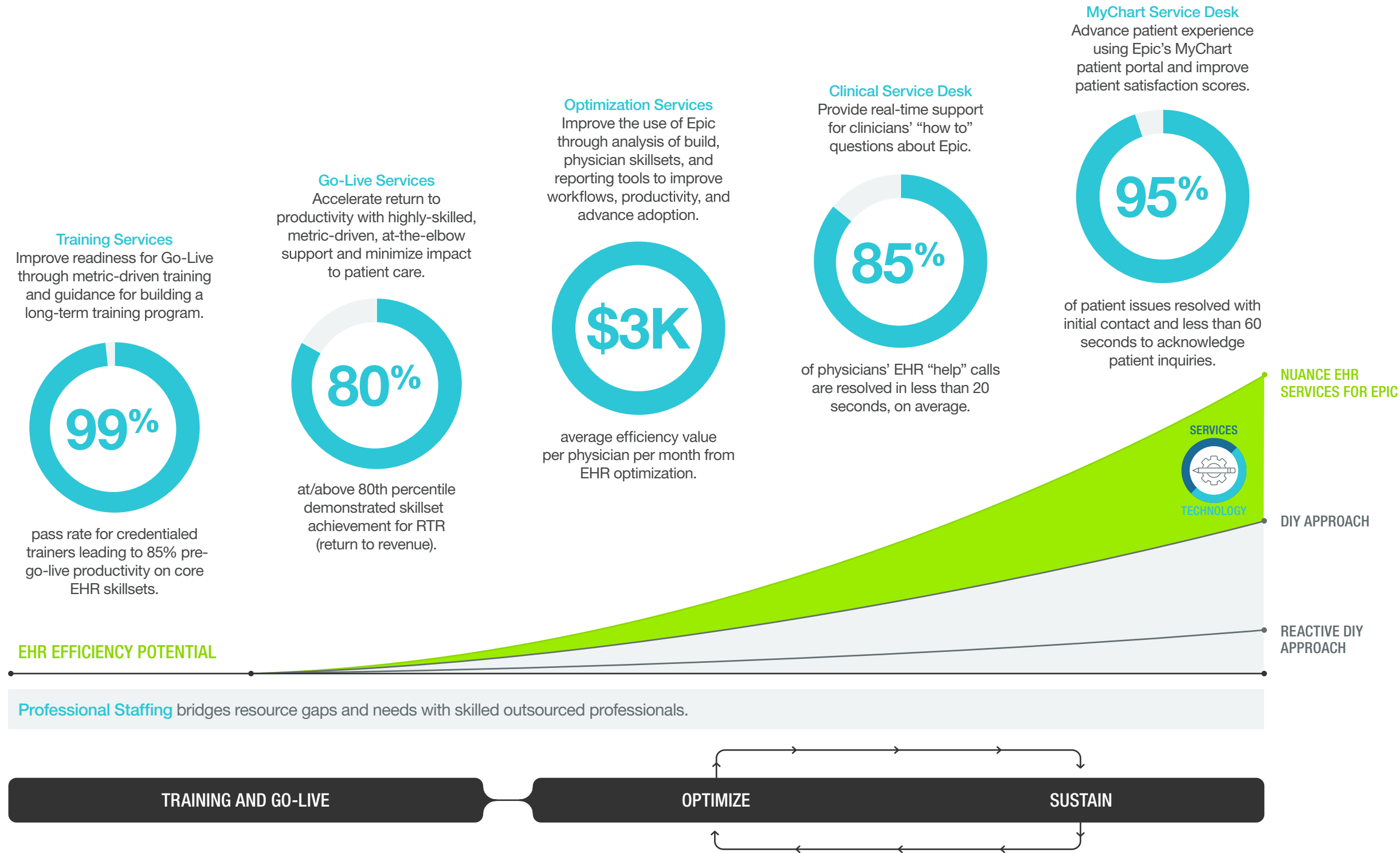


# Reach the full potential of your EHR



Nuance® EHR Services for Epic® help you maximize your IT investment and experience continued success for your clinical staff and patients – throughout your EHR journey.



## You know your EHR isn't optimized when...

- ✗ You don't have access to industry best-practices from a service-led approach to implement your EHR technology
- ✗ Individual physician preferences or specialty-focused personalization has not been offered
- ✗ Physicians are struggling with core EHR skillsets and productivity is being impacted
- ✗ Bandwidth of your training team is focused on new users vs. enhancing physician skillsets with new features and functionality
- ✗ It is challenging or unrealistic to complete timely and consistent EHR updates and upgrades
- ✗ Real-time support for physicians is impacting ability to deliver patient care
- ✗ Physician time spent completing documentation is greater than expected

“The deep integration between Epic and Nuance makes a much more facile tool kit—it's one less speed bump in the road to utilization for our providers.”

John Frenzel, MD, CMIO  
MD Anderson Cancer Center

## Why Nuance?

- 1,500+ leading experts in Epic and Nuance solutions with 8 years average experience
- Proven technology portfolio uniquely combined with Epic expertise and knowledge—more than a decade of joint innovation and strategic development
- Programmatic approach to long-term EHR success with more than 300 successful Epic client service engagements and counting

No matter where you are in your journey, our EHR Services team will partner with you to achieve your financial, patient care, clinician satisfaction, and productivity objectives for maximum return on investment. Learn more at [www.nuance.com/go/EHRservices](http://www.nuance.com/go/EHRservices).