



Specifications

The purpose of the following is to advise clients of the minimum and recommended specifications for the suite of teleradiology products and services provided by Nuance PowerShare. After reviewing this document, clients will be able to select appropriate hardware and platform software from which to run our software and services.

Contents

VRN Web Portal.....	2
Client Outlook – eUnity Viewer (Flash)	3
Accelerator Gateway (AGW).....	5
VRN Gateway – TurboQA - Legacy	6
Firewall Considerations – All Products.....	7
PowerShare Projected Upload/Download Times	8

VRN Web Portal

	PC or MAC Workstation							
Processor	Intel® Core™ 2 Duo IV – 3.0+ GHz							
RAM	4 GB							
Hard Disk	10 GB							
Video	1536 x 2048, 16bit+ Colors							
Monitor	(17+” LCD)							
Other Hardware	Mouse (or trackball) Network Interface Card							
Operating System	Windows 7+ 32/64bit* <i>*Windows 10 not currently supported</i>							
Other Software	**Internet Explorer 11 (MS Edge not currently supported)							
Network** / Connection Speed	<table border="1"> <tbody> <tr> <td>Minimum</td> <td>T-1 / DSL</td> </tr> <tr> <td>Medium</td> <td>Broadband (↓3MBs/ ↑6MBs)</td> </tr> <tr> <td>Optimal</td> <td>10MBs+</td> </tr> </tbody> </table>		Minimum	T-1 / DSL	Medium	Broadband (↓3MBs/ ↑6MBs)	Optimal	10MBs+
Minimum	T-1 / DSL							
Medium	Broadband (↓3MBs/ ↑6MBs)							
Optimal	10MBs+							

*See the [firewall considerations sheet](#) for a list of URL/IP/Ports required by this product for connectivity.

**As of January 12, 2016, Microsoft no longer supports any versions of Internet Explorer prior to Internet Explorer 11 on Nuance’s supported operating systems. Microsoft’s termination of support makes it difficult for Nuance to support older Internet Explorer versions. As such, we have modified our minimum requirements to reflect Internet Explorer 11 moving forward.

However, that does not mean you cannot use an older version of Internet Explorer. We will continue to install and support the VRN on Internet Explorer 9, Internet Explorer 10, and Internet Explorer 11. The VRN may work on versions of Internet Explorer prior to Internet Explorer 9, however we will not develop for older versions of IE and will not support defect fixes on any version other than Internet Explorer 11.

Client Outlook – eUnity Viewer (Flash)

The client must be run inside a browser that supports Flash Player version 10.0 or greater. Using the most recent Flash Player release is recommended. While eUnity stores no patient information on the client machine, we do recommend closing the browser when finished viewing images with eUnity.

Note: Java (v8 Update 72) is required for multi-monitor detection.

Platform	Web-Browser	CPU	RAM	VRAM
Microsoft Windows 2000	Microsoft Internet Explorer 7.0 or later, Firefox 3.x	Intel Pentium 4 3GHz, AMD Athlon™ 64 3400+ processor (or equivalent)	1GB	512MB
Microsoft Windows XP	Microsoft Internet Explorer 6.0 or later, Firefox 2.x, Firefox 3.x, AOL 9, Safari 3.x, Chrome 2.0 or higher	Intel Pentium 4 3GHz, AMD Athlon™ 64 3400+ processor (or equivalent)	1GB	512MB
Microsoft® Windows Vista®	Microsoft Internet Explorer 7.0 or later, Firefox 2.x, Firefox 3.x, AOL 9, Safari 3.x, Chrome 2.0 or higher	Intel Pentium 4 3GHz, AMD Athlon™ 64 3400+ processor (or equivalent)	1GB	512MB
Microsoft Windows 7	Microsoft Internet Explorer 8.0 or later, Firefox 3.x or later	Intel Pentium 4 3GHz, AMD Athlon™ 64 3400+ processor (or equivalent)	1GB	512MB
Mac OS® X v10.4 or later (PowerPC)	Firefox 2.x, Firefox 3.x, AOL for Mac OS X, Safari 3.x.	Intel Pentium 4 3GHz, AMD Athlon™ 64 3400+ processor (or equivalent)	1GB	512MB
Mac OS X v10.4 or later (Intel)	Firefox 2.x, Firefox 3.x, Safari 3.x	Intel Core Duo 1.83GHz or faster processor	1GB	512MB
Mac OS X v10.6	Firefox 3.x or later, Safari 4.x or later	Intel Core Duo 1.83GHz or faster processor	1GB	512MB

*See the [firewall considerations sheet](#) for a list of URL/IP/Ports required by this product for connectivity.

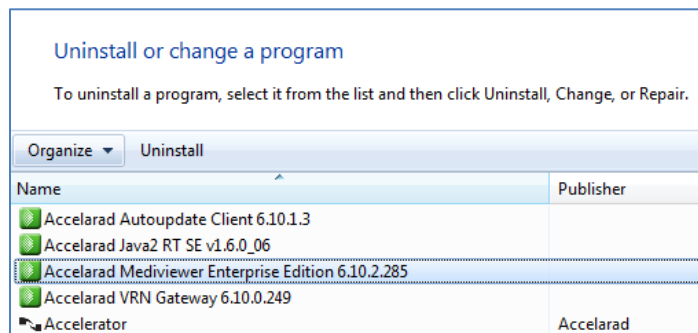
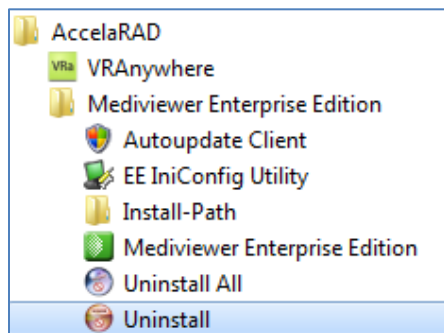
**While our Java applets may run on other releases/updates of Java, PowerShare only guarantees optimal performance on what is listed above.

Enterprise Edition Viewer (EE Viewer) - Legacy

As you are aware, Nuance Communications, Inc. discontinued the EE Mediviewer viewing platform (the “Viewer”) on February 8, 2016. Accordingly, Nuance will discontinue all customer support of the Viewer on March 30, 2016. Customers are encouraged to transition to the eUnity viewer available through PowerShare and the VRN web application. In connection with the communication distributed from Nuance regarding the sunset of the Viewer, this letter is intended to help guide you with the de-installation of the Viewer that was furnished to you for the duration of your services agreement (the “Agreement”).

As part of the end of life process, Nuance strongly recommends that you destroy all instances of the Viewer and all Viewer installers. To uninstall the EE Mediviewer, please follow the instructions below:

You may uninstall the EE Viewer using the **Uninstall** option from the [AccelaRAD] Start Menu folder (see figure left) or via the Windows Add/Remove software feature (see figure right)



Effective as of the date of this notice, Nuance and its affiliates, agents, employees, successors, and assigns hereby disclaim liability for any and all claims, demands, damages, actions, causes of action or suits (collectively, “Claims”), including but not limited to Claims related to the protected health information (“PHI”) of your patients, Claims for personal injury and property damage, Claims made prior to the discontinuation date (February 8, 2016) and for which we have not been notified, or Claims due to your continued use of the Viewer after the discontinuation date.

Please contact Lara Stout (Lara.Stout@nuance.com) for any additional questions or concerns.

Accelerator Gateway (AGW)

Recommendation By Volume	Processor	RAM	HD Space	Daily Study Volume	Internet Speed (upload)
Low	Core2Duo 2.4ghz+	4GB	60GB	Up to 200/day	10MB/s+
Standard	Core2Quad, i5-Dual, i7-Dual, Xeon-Dual	8GB	60GB	200-500/day	20MB/s+
High	i5-Quad, i7-Quad, Xeon(Quad or Hex) 3.0Ghz+	8GB	2x100GB Raid-0 or SSD Equiv.	500-800/day	50MB/s+
Enterprise	i5-Quad, i7-Quad, Xeon(Quad or Hex) 3.5Ghz+	8GB	2x250GB Raid-0 or SSD Equiv.	800+/day ¹	100MB/s+ ²

See the [firewall considerations sheet](#) for a list of URL/IP/Ports required by this product for connectivity.

¹For sites sending more than 800 studies / day, add an additional server per 800 study volume to accommodate load balancing across two or more gateways.

²For sites sending more than 800 studies / day, allocate an additional 100MB/s bandwidth per 800 study volume to accommodate additional upload requirements.

Operating Systems Considerations: All Windows 7+ 32/64bit or Windows Server equivalents are supported³. Windows Server 2012 64 bit and Windows 7 64-bit are optimal. VM environments are fully supported. The hardware must have a static IP address, no DHCP, and always powered on/available.

³Windows 10 not currently supported

GE/Fuji PACS

The Accelerator Gateway (AGW) has problems accepting compressed JPEG Baseline images from GE and Fuji PACS. The following transfer syntax should be removed from the AGW whitelist for GE/Fuji implementations: 1.2.840.10008.1.2.4.50

DICOM Communications

DICOM Destination (QA SCP) – Default (configurable):

- IP: <workstation IP>
- PORT: 4104
- AET: ImageServer

CallingAETs – Default (configurable):

- Receiving Channels (Route to PACS) – POWERSHARE
- Local Archive Query Agent (CSQ) – SMRQUERYSCU
- Local Archive Retrieve Agent (CSQ) – ImageServerQR

VRN Gateway – TurboQA - Legacy

	PC Workstation							
Processor	Intel® Core™ 2 Duo IV – 3.0+ GHz							
RAM	4 GB							
Removable Media Storage Devices	48X32 CD-RW/DVD Combo (needed for CD burning Function)							
Hard Disk	80 GB (RAID 1)							
Video	1536 x 2048, 16bit+ Colors							
Monitor	(17+” LCD)*							
Other Hardware	Network Interface Card 10/100 or 100/1000							
Operating System	Windows 7+ 32/64bit or Windows Server equivalent ** <i>**Windows 10 not currently supported</i>							
Network*** / Connection Speed	<table border="1"> <tbody> <tr> <td>Minimum</td> <td>T-1 / DSL</td> </tr> <tr> <td>Medium</td> <td>Broadband (↓3MBs/ ↑6MBs)</td> </tr> <tr> <td>Optimal</td> <td>10MBs+</td> </tr> </tbody> </table>		Minimum	T-1 / DSL	Medium	Broadband (↓3MBs/ ↑6MBs)	Optimal	10MBs+
Minimum	T-1 / DSL							
Medium	Broadband (↓3MBs/ ↑6MBs)							
Optimal	10MBs+							

*The QA viewer is no longer supported by Nuance. This viewer was provided only as a reference tool for technologists and is not intended to be used for interpreting studies. This viewer should not be used for diagnostic purposes. Please contact Nuance Support toll free at (866) 809-4746 or local/international at (470) 427-7501 for further details.

***See the [firewall considerations sheet](#) for a list of URL/IP/Ports required by this product for connectivity.

DICOM Communications

DICOM Destination (QA SCP) – Default (configurable):

- IP: <workstation IP>
- PORT: 4104
- AET: ImageServer

Firewall Considerations – All Products

WEBAPPS:	<i>URL</i>	<i>IP</i>	<i>PORTS</i>
VRN Portal	vrn.nuancepowershare.com	[216.52.195.134]	443
GATEWAYS/UPLOAD TOOLS:	<i>URL</i>	<i>IP</i>	<i>PORTS</i>
<i>Accelerator</i>			
Upload path	upload.seemyradiology.com	[216.52.195.172]	443
Alternate upload path	upload1.seemyradiology.com	[216.52.195.130]	443
Gateway configuration	gwconfig.seemyradiology.com	[216.52.195.148]	443
PowerShare API	api.seemyradiology.com	[216.52.195.186]	443
Download path	turbo.seemyradiology.com	[216.52.195.182]	443
HL7 (PS360) Reporting	hl7.seemyradiology.com	[216.52.195.148]	443
	hl7.nuancepowershare.com	[216.52.195.148]	443
	hl7v2.nuancepowershare.com	[216.52.195.183]	443
PRRS (PQRS) Reporting	prrs.nuancepowershare.com	[216.52.195.152]	443
Local DICOM Sends	NA	[Accelerator IP]	4100-4200*
<i>TurboQA</i>			
Upload path	upload.seemyradiology.com	[216.52.195.172]	443, 1101
Alternate upload path	upload1.seemyradiology.com	[216.52.195.130]	443
Download path	turbo.seemyradiology.com	[216.52.195.182]	443
QA Licensing	licensing.neurostarsolutions.com	[216.52.195.169]	80
Local DICOM Sends	NA	[TurboGW/QA IP]	4100-4200*
*Denotes a local port on the Gateway workstation to be used when communicating with PACS			
VIEWERS:	<i>URL</i>	<i>IP</i>	<i>PORTS</i>
<i>eUnity Web Viewer</i>			
Authentication	api.seemyradiology.com	[216.52.195.186]	443
PowerShare Website	www1.nuancepowershare.com	[216.52.195.149]	443
Viewer Backend	cloutlook.nuancepowershare.com	[216.52.195.144]	443
Visage 3D-Advanced Viewer	3d.seemyradiology.com	[216.52.195.156]	80, 443, 3389, 8180, 6100-6110
DICTATION:	<i>URL</i>	<i>IP</i>	<i>PORTS</i>
Speech recognition service	nsa.nuancehdp.com	[208.94.121.222]	443
Application settings	nms.nuancehdp.com	[208.94.121.211]	8010 (https traffic)
REMOTE SUPPORT:	<i>URL</i>	<i>IP</i>	<i>PORTS</i>
Log Me In Central:	*.logmein.com	[74.201.74.44]	80, 443
Log Me In Rescue:	*.logmein.com	[69.25.21.201]	443
Webex:	*.webex.com	[varies*]	80,443
	.webexconnect.com	[varies]	80,443

*Webex IP ranges are listed on their network access requirements page [here](#)

Please direct any questions to our PowerShare Support Team.

PowerShare Projected Upload/Download Times

The projected times shown in the chart below are estimates that assume no more than 20% network saturation from other sources. Times may vary from site to site.

	Image Count	Approx Size in MB		Uploading Studies to PowerShare via File Upload Tool (Total Time)									
		Raw	Zipped	16Mbps	10Mbps	7.5Mbps	6.00Mbps	2.048Mbps	1.544Mbps	1.024Mbps	512kbps	256Kbps	
PT-CT	2750	82	41	0:01:06	0:01:15	0:01:24	0:01:36	0:03:48	0:04:51	0:07:00	0:13:25	0:26:14	
US/Cine	100	158	79	0:02:06	0:02:25	0:02:41	0:03:06	0:07:20	0:09:21	0:13:30	0:25:51	0:50:32	
CT	500	98.2	49.1	0:01:19	0:01:30	0:01:40	0:01:55	0:04:33	0:05:48	0:08:23	0:16:04	0:31:24	
MR	500	125	62.5	0:01:40	0:01:55	0:02:07	0:02:27	0:05:48	0:07:24	0:10:41	0:20:27	0:39:59	
MG	4	158	79	0:02:06	0:02:25	0:02:41	0:03:06	0:07:20	0:09:21	0:13:30	0:25:51	0:50:32	
CR	3	36	18	0:00:29	0:00:33	0:00:37	0:00:42	0:01:40	0:02:08	0:03:05	0:05:53	0:11:31	
US	40	40	20	0:00:32	0:00:37	0:00:41	0:00:47	0:01:51	0:02:22	0:03:25	0:06:33	0:12:48	

	Image Count	Approx Size in MB		Uploading Studies to PowerShare via Accelerator (Total Time)									
		Raw	Zipped	16Mbps	10Mbps	7.5Mbps	6.00Mbps	2.048Mbps	1.544Mbps	1.024Mbps	512kbps	256Kbps	
PT-CT	2750	82	41	0:03:25	0:03:35	0:03:43	0:03:56	0:06:08	0:07:11	0:09:20	0:15:44	0:28:33	
US/Cine	100	158	79	0:04:11	0:04:30	0:04:46	0:05:10	0:09:24	0:11:25	0:15:34	0:27:55	0:52:36	
CT	500	98.2	49.1	0:03:35	0:03:47	0:03:57	0:04:12	0:06:50	0:08:05	0:10:40	0:18:20	0:33:41	
MR	500	125	62.5	0:03:51	0:04:06	0:04:19	0:04:38	0:07:59	0:09:34	0:12:52	0:22:38	0:42:10	
MG	4	158	79	0:04:11	0:04:30	0:04:46	0:05:10	0:09:24	0:11:25	0:15:34	0:27:55	0:52:36	
CR	3	36	18	0:02:58	0:03:02	0:03:06	0:03:11	0:04:09	0:04:37	0:05:33	0:08:22	0:14:00	
US	40	40	20	0:03:00	0:03:05	0:03:09	0:03:15	0:04:19	0:04:50	0:05:53	0:09:01	0:15:16	

	Image Count	Approx Size in MB		Downloading Studies from PowerShare to PACS via Accelerator Receiving Channel									
		Raw	Zipped	16Mbps	10Mbps	7.5Mbps	6.00Mbps	2.048Mbps	1.544Mbps	1.024Mbps	512kbps	256Kbps	
PT-CT	2750	82	41	0:00:52	0:01:09	0:01:23	0:01:46	0:05:36	0:07:26	0:11:13	0:22:25	0:44:51	
US/Cine	100	158	79	0:01:40	0:02:13	0:02:40	0:03:24	0:10:48	0:14:19	0:21:36	0:43:12	1:26:24	
CT	500	98.2	49.1	0:01:02	0:01:22	0:01:40	0:02:06	0:06:43	0:08:54	0:13:25	0:26:51	0:53:42	
MR	500	125	62.5	0:01:19	0:01:45	0:02:07	0:02:41	0:08:32	0:11:20	0:17:05	0:34:11	1:08:21	
MG	4	158	79	0:01:40	0:02:13	0:02:40	0:03:24	0:10:48	0:14:19	0:21:36	0:43:12	1:26:24	
CR	3	36	18	0:00:23	0:00:30	0:00:37	0:00:46	0:02:28	0:03:16	0:04:55	0:09:51	0:19:41	
US	40	40	20	0:00:25	0:00:34	0:00:41	0:00:52	0:02:44	0:03:38	0:05:28	0:10:56	0:21:52	

PowerShare Support**Contacting Support**

A dedicated Nuance Healthcare Technical Support team, available 24x7x365, services our **PowerShare Network** customers who have an active maintenance contract with Nuance.

**Nuance PowerShare Technical Support**

This team can offer assistance via remote on-line connectivity to your systems, and it is available toll-free at **(866) 809-4746**. Alternatively, you can email us at support@nuancepowershare.com.